
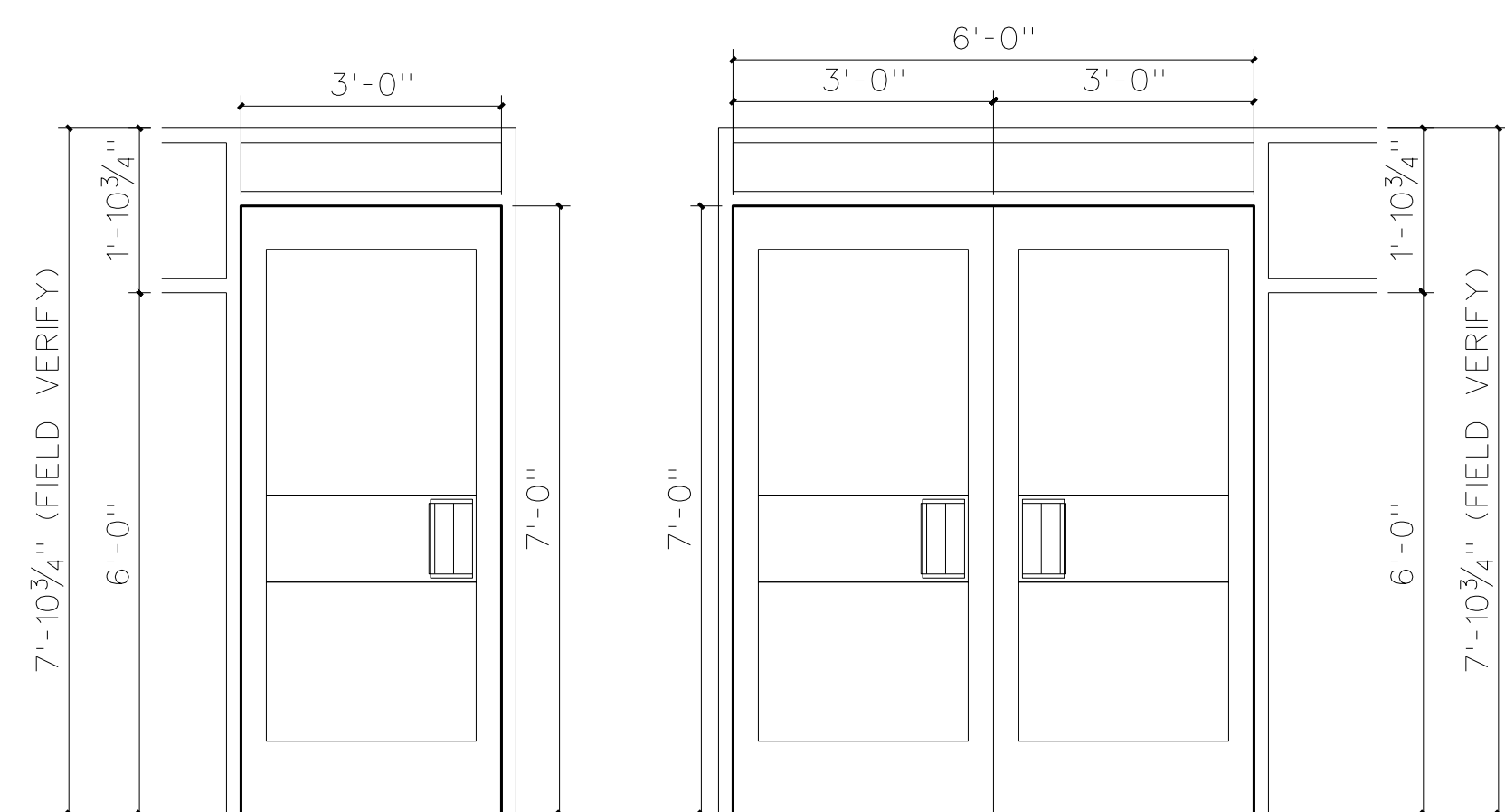


DOOR SCHEDULE 

EXIT DEVICE
CLOSE WITH BACKSTOP
KEYED OR OFFICE LOCKSET
VSD OR MULTILOCK
PROVIDE BANGUARD SWEEP ON DOOR BOTTOM

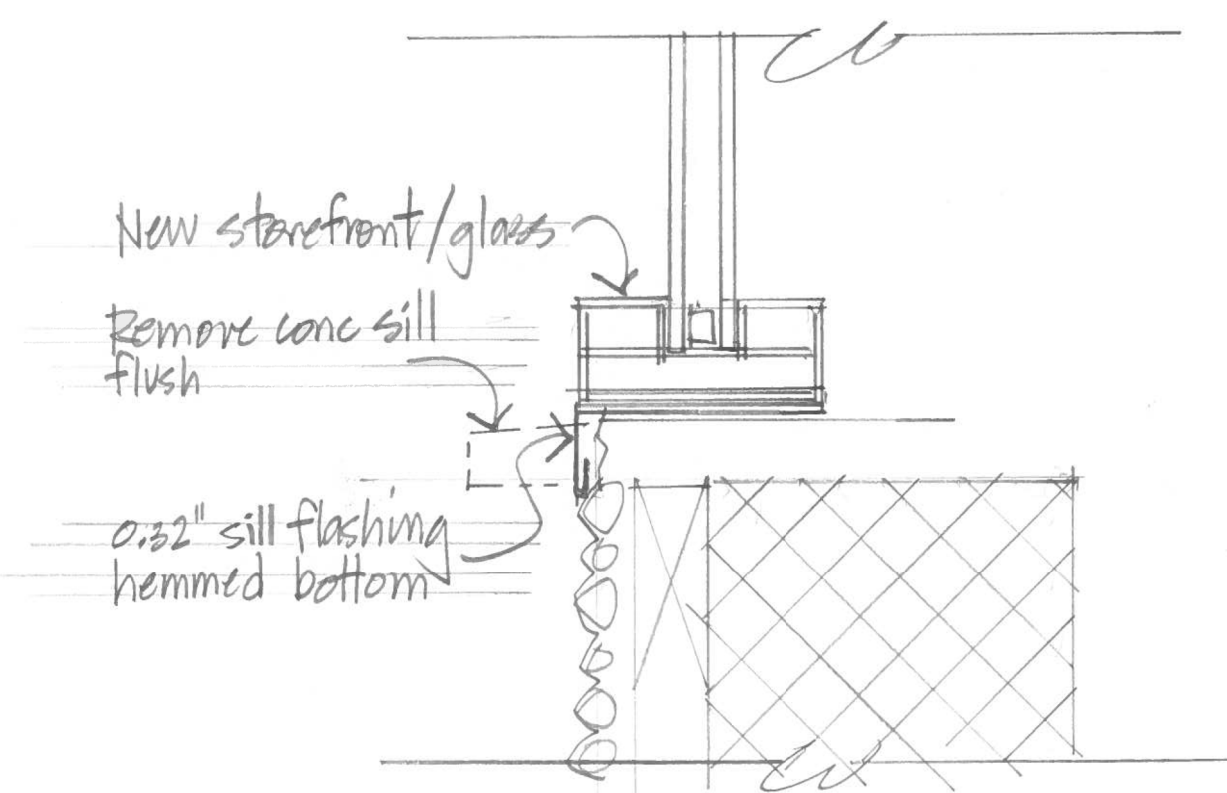
| MARK | | SIZE | | | LOCATION | DETAIL | DESCRIPTION | FRM WID | FIRE RATING | | | | | | COMMENTS |
|------|------|------|-----|----|--------------------------|--------|----------------------|---------|-------------|---|---|---|---|---|----------|
| | | THK | WID | HT | | | | | | | | | | | |
| 1 | PAIR | 1.75 | 36 | 84 | EXT TO ADMIN | 101.8 | FIBERGLASS / VIEW GL | 5 | | 2 | 2 | | 1 | 2 | |
| 3 | PAIR | 1.75 | 36 | 84 | EXT TO ADMIN | 101.8 | FIBERGLASS / VIEW GL | 5 | | 2 | 2 | | 1 | 2 | |
| 9 | PAIR | 1.75 | 36 | 84 | COURTYARD TO ADMIN | 101.8 | FIBERGLASS / VIEW GL | 5 | | 2 | 2 | | 1 | 2 | |
| 10 | | 1.75 | 36 | 84 | COURTYARD TO PRINCIPAL | 101.8 | FIBERGLASS / VIEW GL | 5 | | | 1 | 1 | | | |
| 20 | PAIR | 1.75 | 36 | 84 | COURTYARD TO ADMIN | 101.8 | FIBERGLASS / VIEW GL | 5 | | 2 | 2 | | 1 | 2 | |
| 40 | | 1.75 | 36 | 84 | COURTYARD TO HOME ARTS | 101.8 | FIBERGLASS / VIEW GL | 5 | | 1 | 1 | | | | |
| 41 | PAIR | 1.75 | 36 | 84 | COURTYARD TO CORRIDOR | 101.8 | FIBERGLASS / VIEW GL | 5 | | 2 | 2 | | 1 | 2 | |
| 42 | PAIR | 1.75 | 36 | 84 | EXTERIOR TO CORRIDOR | 101.8 | FIBERGLASS / VIEW GL | 5 | | 2 | 2 | | 1 | 2 | |
| 55 | PAIR | 1.75 | 36 | 84 | EXTERIOR TO CORRIDOR | 101.8 | FIBERGLASS / VIEW GL | 5 | | 2 | 2 | | 1 | 2 | |
| 56 | PAIR | 1.75 | 36 | 84 | EXTERIOR TO CORRIDOR | 101.8 | FIBERGLASS / VIEW GL | 5 | | 2 | 2 | | 1 | 2 | |
| 73 | PAIR | 1.75 | 36 | 84 | COURTYARD TO CORRIDOR | 101.8 | FIBERGLASS / VIEW GL | 5 | | 2 | 2 | | 1 | 2 | |
| 77 | | 1.75 | 36 | 84 | EXTERIOR TO MEDIA CENTER | 101.8 | FIBERGLASS / VIEW GL | 5 | | 1 | 1 | | | | |
| 78 | | 1.75 | 36 | 84 | EXTERIOR TO MEDIA CENTER | 101.8 | FIBERGLASS / VIEW GL | 5 | | 1 | 1 | | | | |
| 81 | PAIR | 1.75 | 36 | 84 | COURTYARD TO CORRIDOR | 101.8 | FIBERGLASS / VIEW GL | 5 | | 2 | 2 | | 1 | 2 | |
| 86 | | 1.75 | 36 | 84 | COURTYARD TO ART | 101.8 | FIBERGLASS / VIEW GL | 5 | | 1 | 1 | | | | |
| 98 | PAIR | 1.75 | 36 | 84 | COURTYARD TO CORRIDOR | 101.8 | FIBERGLASS / VIEW GL | 5 | | 2 | 2 | | 1 | 2 | |
| 106 | PAIR | 1.75 | 36 | 84 | EXTERIOR TO COURTYARD | 101.8 | FIBERGLASS / VIEW GL | 5 | | 2 | 2 | | 1 | 2 | |
| 107 | PAIR | 1.75 | 36 | 84 | EXTERIOR TO COURTYARD | 101.8 | FIBERGLASS / VIEW GL | 5 | | 2 | 2 | | 1 | 2 | |
| 108 | | 1.75 | 36 | 84 | COURTYARD TO COMMONS | 101.8 | FIBERGLASS / VIEW GL | 5 | | 1 | 1 | | | | |
| 109 | | 1.75 | 36 | 84 | COURTYARD TO COMMONS | 101.8 | FIBERGLASS / VIEW GL | 5 | | 1 | 1 | | | | |
| 110 | | 1.75 | 36 | 84 | COURTYARD TO COMMONS | 101.8 | FIBERGLASS / VIEW GL | 5 | | 1 | 1 | | | | |
| 134 | | 1.75 | 36 | 84 | COURTYARD TO COMMONS | 101.8 | FIBERGLASS / VIEW GL | 5 | | 1 | 1 | | | | |

| NOTES AND GENERAL AND SPECIAL HARDWARE REQUIRED | |
|---|--|
| 1 | ALL DOORS TO RECEIVE CONTINUOUS HINGES AS SPECIFIED |
| 2 | ALL DOORS TO RECEIVE WALL OR OVERHEAD STOPS TO SUIT CONDITION OF USE. DOORS WITH MAGNETIC HOLD OPENS TO RECEIVE FLOOR STOPS. |
| 3 | PROVIDE CLOSERS WITH BACKSTOPS EXTERIOR DOORS AND TO SUIT CONDITION OF USE |
| 4 | EXTERIOR DOORS TO BE PROVIDED WITH WEATHERSTRIPPING AND THRESHOLDS |
| 5 | EXIT DEVICES TO BE PROVIDED WITH CYLINDERS |
| 6 | AT PAIRS OF DOORS, PULL SIDE, PROVIDE PULL OR LEVER RIGHT SIDE ONLY |
| 7 | ALUMINUM DOORS - SEE SPECIFICATIONS FOR HARDWARE NOT INDICATED ABOVE |
| 8 | PROVIDE CYLINDERS FOR KEYED MULLIONS SUPPLIED BY ALUMINUM DOOR SUPPLIER |
| 9 | PROVIDE SOLID WOOD BLOCKING FOR DOOR STOPS AND HOLD OPEN DEVICES |
| 10 | EXIT DEVICES AT EXTERIOR DOORS TO BE NL WITH PULL |
| 11 | EXIT DEVICES AT INTERIOR DOORS TO BE CLASSROOM FUNCTION WITH LEVER |

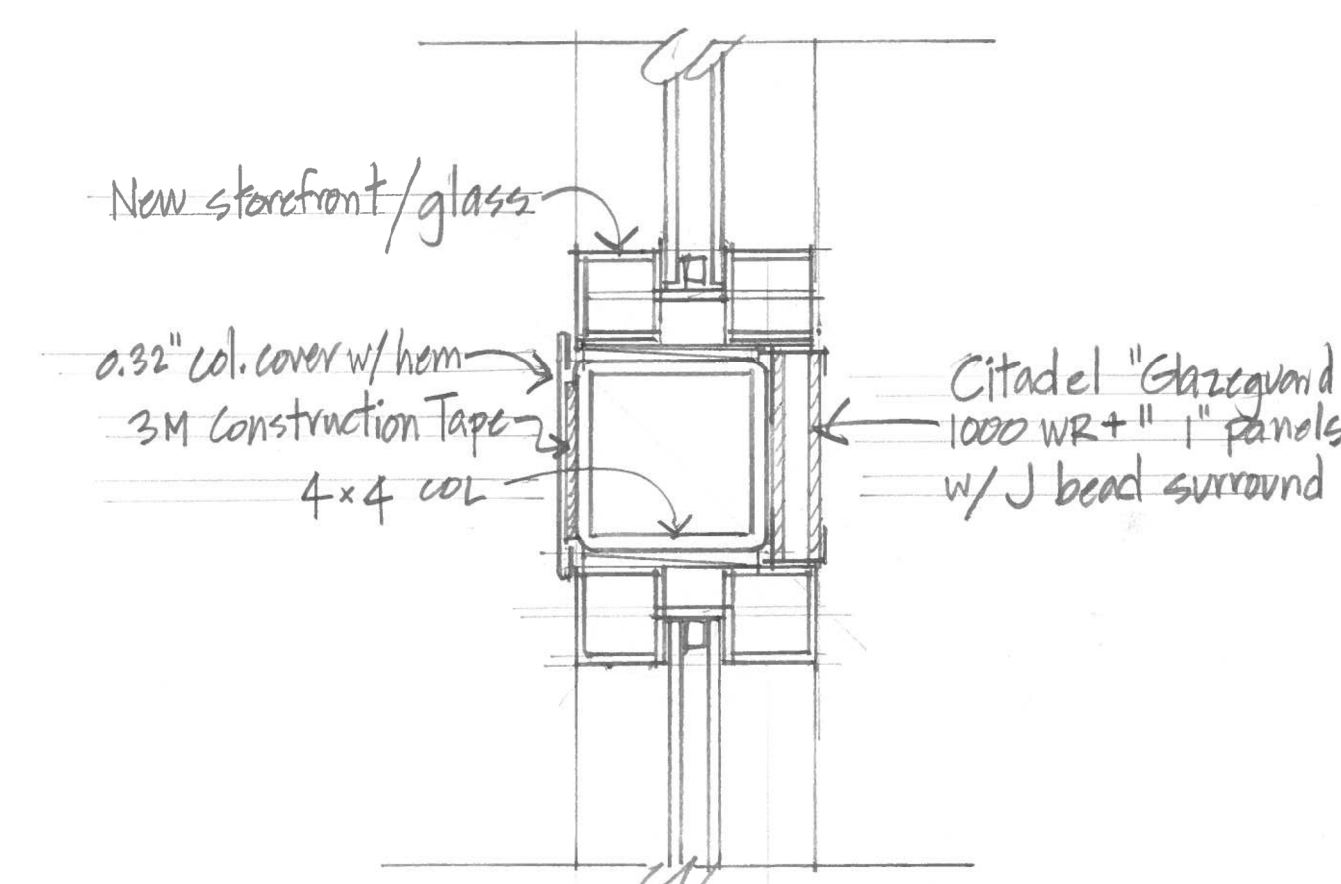


WIDE STILE
FRP/ALUMINUM WITH
9/16" IMPACT RESISTANT GLASS
IN ALUMINUM FRAME

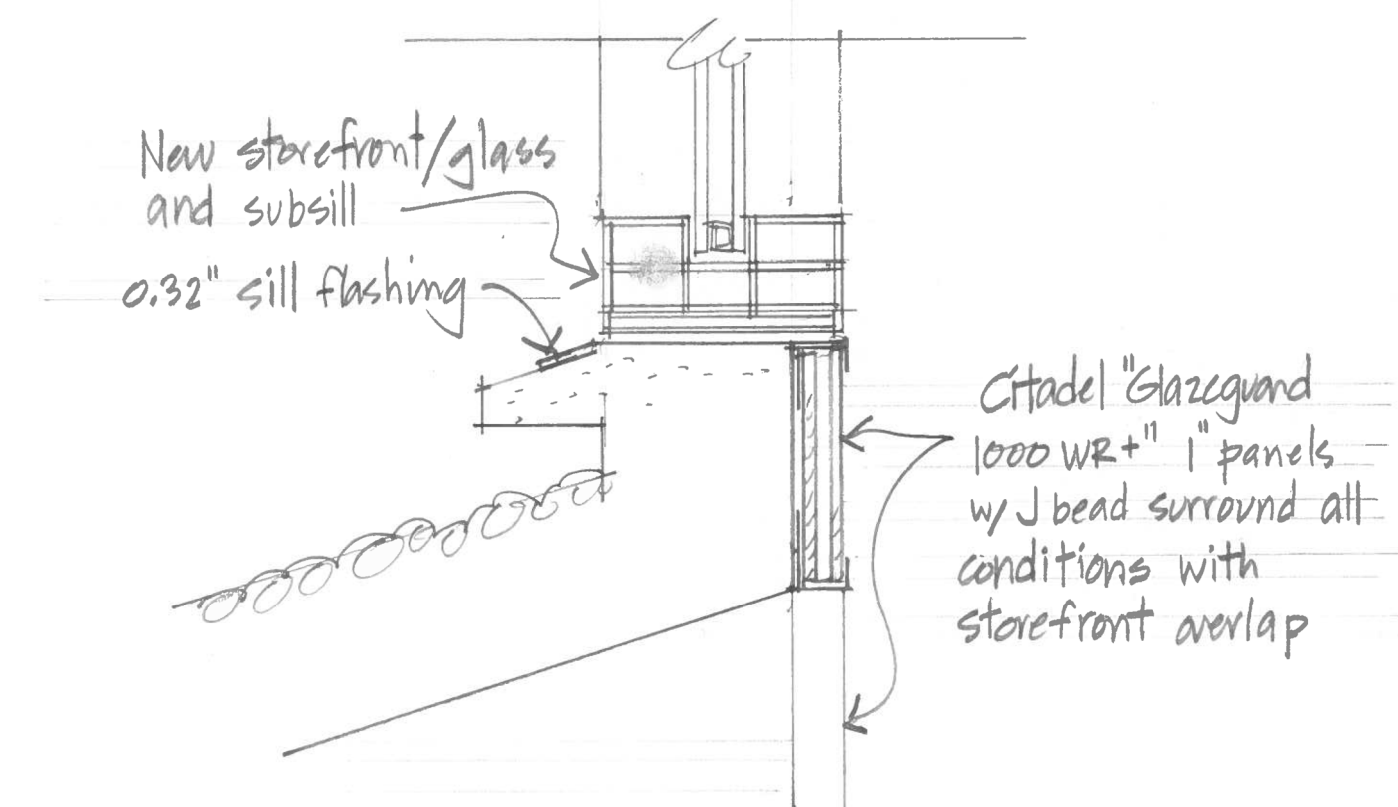
101.8 TYPICAL REPLACEMENT DOOR ELEVATIONS



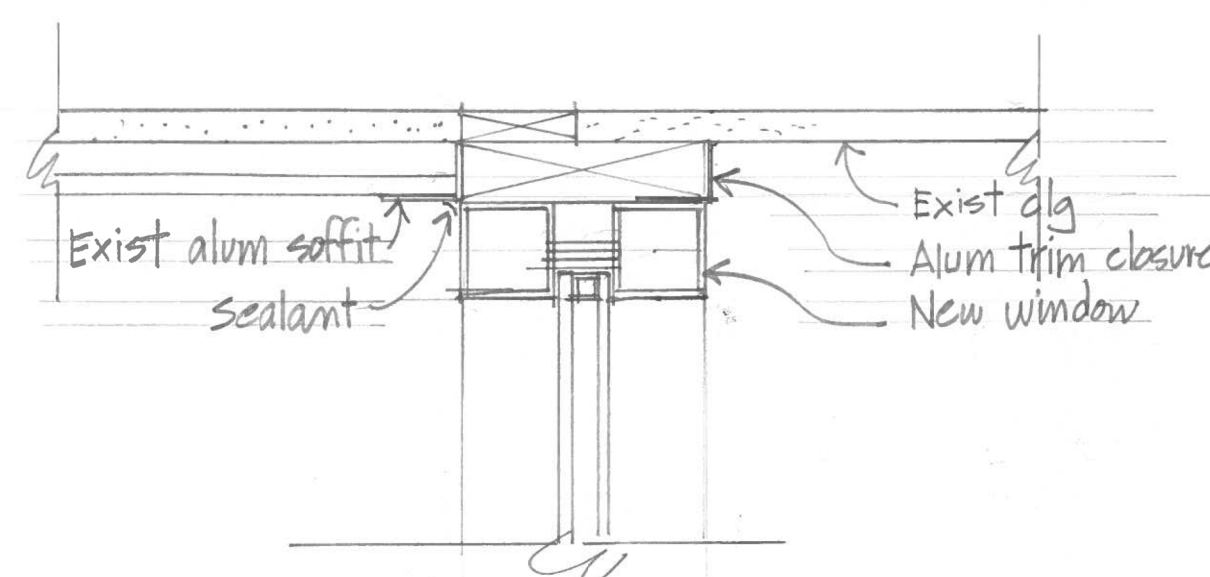
101.7 SILL AT GYM BUILDING
SCALE: 3" = 1'-0"



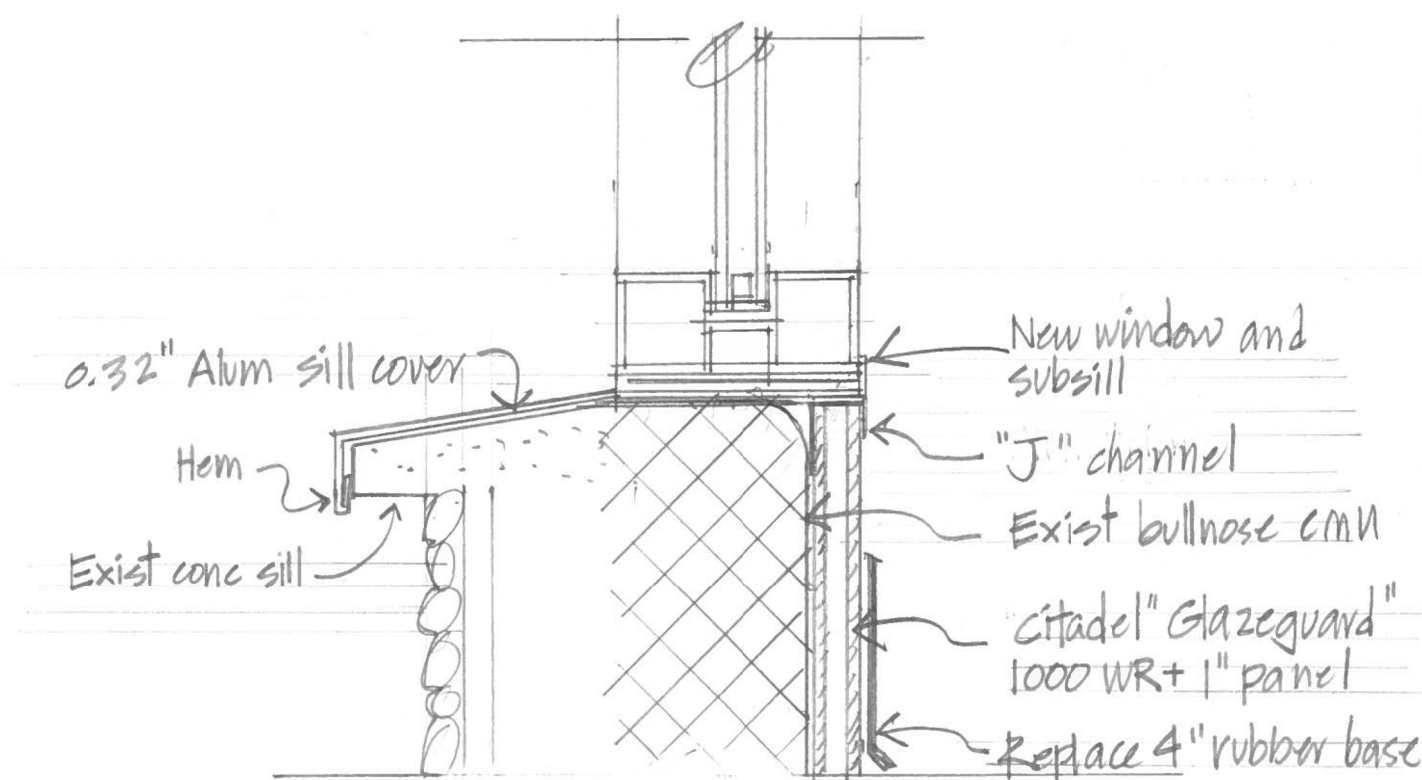
TYPICAL COLUMN DETAIL (D)



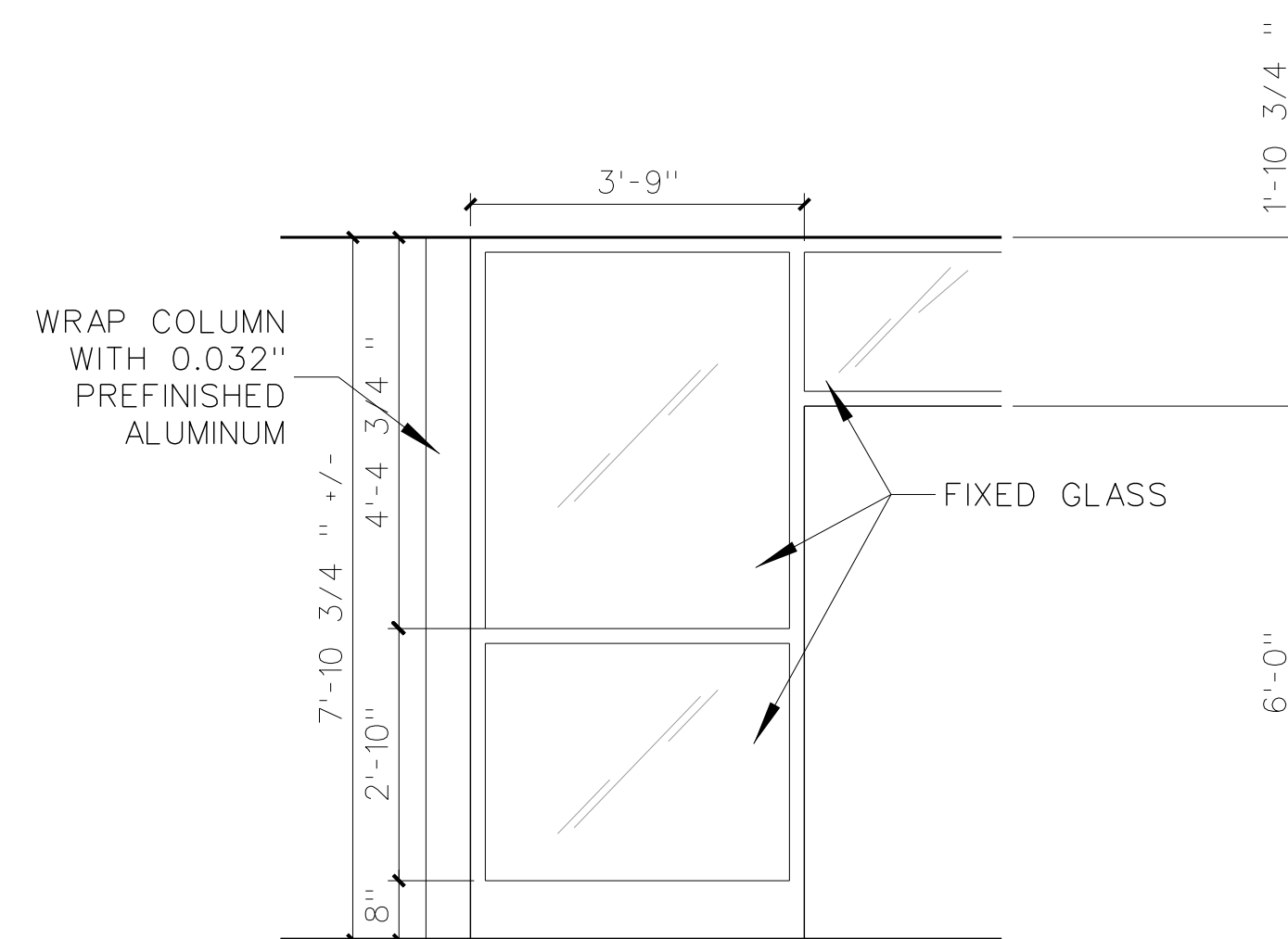
101.6 SILL AT HIGH WINDOW
SCALE: 3" = 1'-0"



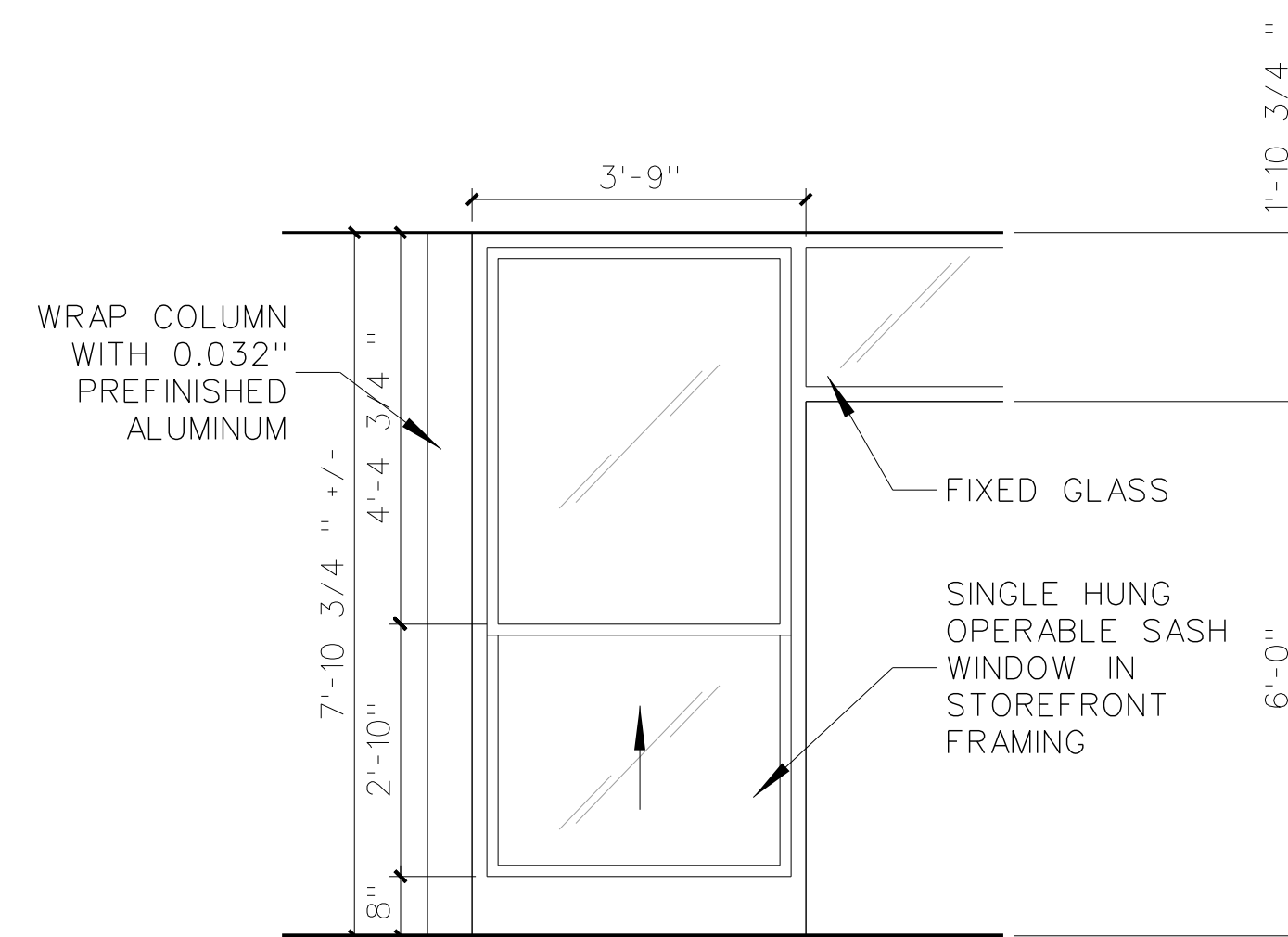
TYPICAL HEAD DETAIL (B)



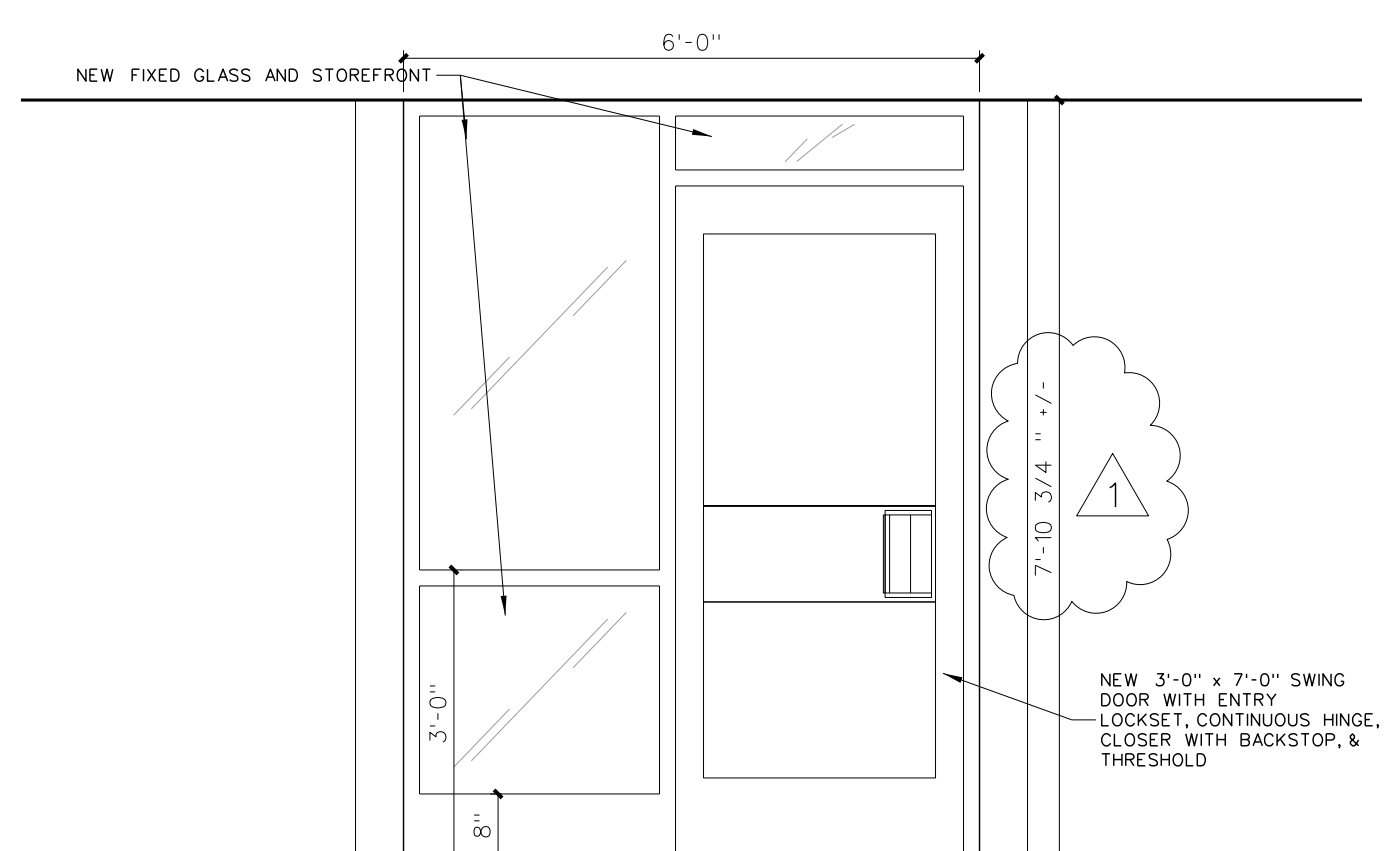
101.5 SILL AT "LONG" WINDOW
SCALE: 3" = 1'-0"



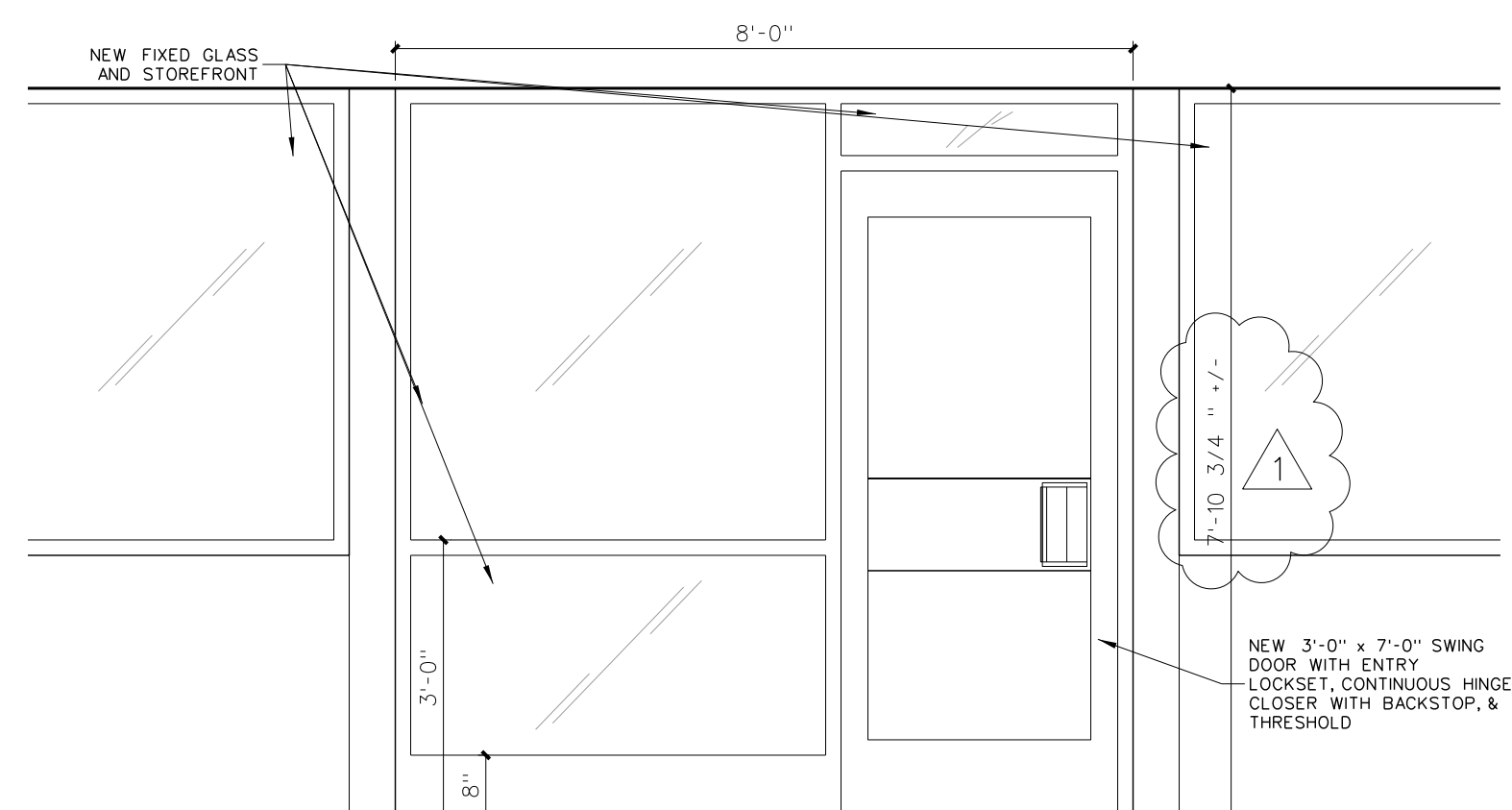
101.4 R/V WINDOW TYPE 1



101.3 R/V WINDOW TYPE 1
WHERE SHOWN "R/V"
 SCALE: 1/2" = 1'-0"



101.2 SWING DOOR
AND SIDELIGHT REPLACEMENT
WITH SWING DOOR AND SIDELIGHT
AT PRINCIPAL DOOR #10
SCALE: 1/2" = 1'-0"



101.1 SLIDING DOOR REPLACEMENT
WITH SWING DOOR AND SIDELIGHT
AT HOME ARTS DOOR #40 AND
ART DOOR #86
SCALE: 1/2" = 1'-0"