

ADDENDUM NO. 2

DATE: January 25, 2024

PROJECT: MAIN GYMNASIUM IMPROVEMENTS
SANDERSON HIGH SCHOOL
5500 Dixon Drive, Raleigh NC 27609

OWNER: **Wake County Public School System**
1551 Rock Quarry Road, Building A, Suite 100, Raleigh, NC 27610

ARCHITECT: **Gürel Architecture, Inc.**
1145B Executive Circle, Cary, NC 27511

This Addendum, applicable to the work designated herein, shall be understood to be and is an Addendum to the contract documents and, as such, shall become a part of and included in the contract.

1. Please refer to Section SC – Supplemental Conditions. This section is revised as per the enclosed Revised Section SC – Supplemental Conditions. Revisions include the increase in construction time to 140 calendar days from 4/22/2024 Notice to Proceed Date to 9/9/2024 Substantial Completion Date and the increase in Assessment of Liquidated Damages to \$1,000.00 per calendar day for the Substantial Completion delays and \$350.00 per calendar day for the Final Completion delays.
2. Replace two (2) wall mounted scoreboards in the Main Gymnasium 172 with two (2) wall mounted scoreboards at the same locations. Provide scoreboards, wireless control console and wireless handheld controls as per attached Specification Section 116643 – Interior Electronic Scoreboards. The existing scoreboards' power supply shall remain and shall be reutilized for the new scoreboards.
3. Provide stainless steel column wrap on existing column in Corridor 169 as per attached Sketch SK A01.
4. The flooring at the Northeast corner of the Main Gymnasium 172 is revised as per attached Sketch SK A02.
5. The existing Telescopic Seating was manufactured by Hussey Seating Company and was installed in 2000. The existing seating Power Supply information is provided per attached Sketch SK A03 based upon the shop drawing of 2000 project. The Basis of Design manufacturer is Hussey Seating Company. The intent is to be able to reutilize the existing power supply for the replacement telescopic seating. The electrical engineering delegated design and electrical work allowance was included in the Owner's Contingency in case we have to modify any electrical components to work with the approved seating power requirements.
6. Add painting of catwalks and stair structures including the exposed beams, stringers, decks of the catwalks and stairs located above seating Bank A to the scope of work for this project. Utilize the same paints specified for HM Doors, Windows and Frames in the Painting Schedule for this task.
7. Refer to Section 099000 – Painting, Painting Schedule. The interior Masonry (CMU Walls) paint requirements are revised as follows:

MASONRY - (Interior CMU Walls)

Latex Systems, Eg-Shel Finish

1st Coat: S-W PrepRite ProBlock Latex Primer-Sealer, B51-600 Series
(4.0 mils wet, 1.4 mil dry)

2nd Coat: S-W ProMar 200 Zero VOC Latex Eg-Shel B20-2600 Series

3rd Coat: S-W ProMar 200 Zero VOC Latex Eg-Shel B20-2600 Series
(4.0 mils wet, 1.7 mils dry per coat)

MAIN GYMNASIUM IMPROVEMENTS
SANDERSON HIGH SCHOOL
Wake County Public School System

8. The Hollow Metal Doors 172.1 through 172.6 were recently painted with graphics on the sides facing the corridor 100K. The graphic paint on these doors shall remain and shall be protected during the construction. Contractor shall paint the remainder faces of these Hollow Metal doors and their Hollow Metal door frames per specifications Section 099000 - Painting.
 9. Please refer to the responses provided to the contractors' Requests for Information (RFI's) received since the issuance of Addendum No. 1 attached to these minutes.
 10. Refer to Drawing A100. General Note G08 is deleted. No mechanical work is anticipated for this project.
 11. Refer to Detail 2-A400, Typical Interior Threshold. The threshold shall be Assa Abloy, Pemko 158AK (with Pemkote finish), ADA compliant or approved equal. Doors 172.1 through 172.6, Door to Storage 172A, Door to Concession 172B and transition strip from wood flooring to existing flooring at NE corner of Gymnasium 172 shall receive this type of threshold. This is a ¼" offset saddle threshold anticipating ± ¼" floor elevation difference between the adjacent existing flooring and the wood flooring. This threshold will be attached to floor at the adjacent existing flooring side and shall not be anchored to the wood flooring.
 12. Refer to Detail 3-A400, Typical Exterior Door Threshold. The threshold shall be Assa Abloy, Pemko 2746x6AK (with Pemkote finish), ADA compliant or approved equal. Doors 172.7 through 172.12 shall receive this type of threshold. ¼" spacer needs to be provided over the wood flooring extension of this threshold anticipating ± ¼" floor elevation difference between the concrete door sill and the wood flooring. This threshold will be attached to concrete door sill side and shall not be anchored to the wood flooring.
 13. The owner shared photographs taken during the previous repairs to the existing wood athletic flooring system damaged due to the roof leaks. Photographs show the existing flooring system exposed components. It appears that the existing flooring system consists of 25/32" T&G Maple Strips on 2x3 wood sleepers on resilient pads. Please see attached Previous Floor Repairs Photographs for information.
 14. The school provided the contact information for the artist who performed the mural at north masonry wall, the floor design and the "Spartans" lettering and logos on the south GWB wall as follows:
Dennis Brechner
mobile: 910-850-6494
work: 910-425-5343
email: brechnerdd@aol.com
 15. Refer to Specification Section 096400 Wood Athletic Floor System. The following product and the manufacturer are acceptable provided they comply with the construction documents; maple strips length shall match the Basis of Design product Action Long-Length strips and 5/8" thick resilient pads are utilized:
Clutch Court - Trainer 3 Floating Wood Athletic Floor System.
As manufactured by Tarkett Sports in partnership with WD Flooring.
- Encl. Revised Section SC – Supplemental Conditions (2 pages)
Specification Section 116643 – Interior Electronic Scoreboards (5 pages)
Sketch SK A01 – Column Wrap (1 Drawing)
Sketch SK A02 – Enlarged Plan Gymnasium 172 NE Corner (1 Drawing)
Sketch SK A03 – Existing Seating Power Supply (1 Drawing)
Responses to Contractors' RFI's and Photo Attachments (7 pages)
Previous Floor Repairs Photographs (1 page)

END OF ADDENDUM NO. 2

SECTION SC 300K to 2M

SUPPLEMENTAL CONDITIONS

GENERAL CONDITIONS

Document GC, GENERAL CONDITIONS OF THE CONTRACT FOR CONSTRUCTION, constitutes the General Conditions of this Contract, and is hereinafter called "General Conditions." The General Conditions are further revised and supplemented by the provisions of these Supplemental Conditions. The General Conditions and the Supplemental Conditions are applicable to all of the Work under this contract and shall apply to the Contractor and all Subcontractors and Sub-subcontractors.

SUPPLEMENTS:

The following supplements modify, change, delete, or add to the General Conditions. Where any article of the General Conditions is modified or any paragraph deleted, subparagraph or clause thereof is modified, or deleted by these supplements, the unaltered provisions of such article, paragraph, subparagraph or clause shall remain in effect. If there is a discrepancy between the General Conditions and these Supplemental Conditions, the Supplemental Conditions shall control.

ARTICLE 1 - CONTRACT DOCUMENTS

ADD THE FOLLOWING TO 1.1.4.1:

- 1.1.4.1 The requirement to provide one set of drawings and specifications for free as noted in Section 1.1.4. is revised as follows:

The Contractor will be furnished with the electronic copies of the drawings and the specifications in pdf format. There will not be any distribution of hard copies of the plan sets.

The Contractor shall be responsible for downloading and printing the Permit Set.

ARTICLE 7 – TIME

ADD THE FOLLOWING AS A NEW SECOND SENTENCE TO PARAGRAPH 7.2.1:

The Contractor acknowledges that the coronavirus (COVID-19) pandemic has impacted businesses across the country.

ARTICLE 8 – PAYMENTS AND COMPLETION

ADD THE FOLLOWING TO PARAGRAPH 8.9:

- 8.9.1 Substantial Completion Liquidated Damages shall be the sum of **One Thousand Dollars (\$1,000.00)** per calendar day, and this amount shall be assessed in accordance with Subparagraph 8.9.1 of the General Conditions.

- 8.9.2 Final Completion Liquidated Damages shall be the sum of **Three Hundred Fifty Dollars (\$350.00)** per calendar day, and this amount shall be assessed in accordance with Subparagraph 8.9.2 of the General Conditions.

ADD THE FOLLOWING PARAGRAPH 8.11:

- 8.11.1 The schedule below contains certain specific dates in addition to date of Notice to Proceed and Time for Completion. These dates shall be adhered to and are the last acceptable dates unless modified by mutual agreement between the Contractor and the Owner. All dates indicate midnight unless otherwise stipulated. The only exceptions to this schedule are defined in the General Conditions under Paragraph 7.2 DELAYS AND EXTENSIONS OF TIME.

Notice of Intent to Award:	February 2, 2024
Contractor Due Date to Return Documentation to WCPSS:	14 calendar days from GC's receipt of Contract.
Notice to Proceed:	April 22, 2024
Substantial Completion:	September 9, 2024
Final Completion:	September 30, 2024

- 8.11.2 The Owner reserves the right to withhold the issuance of Notice to Proceed by up to forty-five (45) days. For each day that Notice to Proceed is withheld pursuant to this Subparagraph, the dates established for Substantial Completion and Final Completion shall be adjusted. The contractor shall not be entitled to additional compensation if the owner withholds the issuance of Notice to Proceed pursuant to this Subparagraph.

ARTICLE 10 – CHANGES IN WORK

ADD THE FOLLOWING NEW PARAGRAPH 10.9.14:

- 10.9.14 Additional services and dispute resolution services by the Design Consultant shall be paid by the Contractor at the rate of two hundred dollars (\$200.00) per hour.

END OF SUPPLEMENTAL CONDITIONS

SECTION 116643 - INTERIOR ELECTRONIC SCOREBOARDS

PART 1 - GENERAL

SUMMARY

Section includes:

Removal of two (2) wall mounted, interior scoreboards. The power supply for the existing scoreboards shall remain and shall be reutilized for the new scoreboards.

Installation of two (2) wall mounted, interior, electronic, Basketball/Volleyball/Wrestling scoreboards including control centers, and other accessories for complete functional installation. The new scoreboards shall be installed at previous scoreboard locations, centered horizontally and aligned at top.

REFERENCES

American Society for Testing and Materials (ASTM) Publications:
ASTM B221 - Aluminum-Alloy Extruded Bar, Rod, Wire, Shape, and Tube.
National Electrical Code.
Federal Communications Commission, Part 15 Rules & Regulations.
UL and C-UL Standard for Electric Signs

SUBMITTALS

Product data for scoreboards, controls, and accessories shall include descriptions of control functions etc.
Installation drawings, face layout, dimensions, construction, electrical wiring diagrams, and method of anchorage.

Copy of guarantee for review by Architect.

Manufacturer's installation instructions.

Finish Samples.

QUALITY ASSURANCE

Source limitation: All components including scoreboard, control center, control cable, and other accessories and installation hardware shall be products of a single manufacturer.

Manufacturer qualifications: Company specializing in manufacturing electronic scoreboards with 10 years minimum successful world-wide experience.

Scoreboards and other electrical components shall be certified for use in United States and Canada by Underwriter Laboratories, (UL), Inc. and shall bear either UL or C-UL label only.

Scoreboards and other electrical components shall be electrically grounded in accordance with National Electrical Code (NEC), Article 600.

GUARANTEE

Scoreboards are guaranteed for a period of five (5) years from the date of invoice against defects in workmanship or materials.

Wireless components carry a two (2) year guarantee from date of invoice. Hand-held controls and switches carry a one (1) year guarantee from date of invoice.

Lifetime telephone support.

PART 2 - PRODUCTS

ACCEPTABLE MANUFACTURERS

The following manufacturer and product are referenced as Basis of Design to establish the minimum acceptable level of performance and quality:

Model 2750 Scoreboard as manufactured by Nevco Inc.

Products of other manufacturers, provided that they comply with the specified performance and quality requirements of the contract documents, will be considered in accordance with the General Conditions substitution procedures.

MATERIALS

Aluminum face and perimeter frame: Fabricated from 0.050-inch minimum thickness, ASTM B221 aluminum sheet.

Finish: Acrylic polyurethane paint. Color as selected by Architect from manufacturer's standard range.

Electronics: Low voltage, solid state, 2-wire cable, multiplex system, quartz crystal controlled.

Provide fiber optic communication interface to reduce threat of damage from electrical storms.

LED (light emitting diode) units: Seven-bar, segmented digits in protective aluminum cover, rated typical life 100,000 hours, and designed to provide excellent visibility from all angles and sides.

Provide location specific universal power cord with plug for world-wide installation.

Control cable where required shall be UL listed, 2-wire, type RG-58/U, coaxial cable, 1/4-inch diameter.

Junction boxes where required: Sheet metal box and cover, 4-1/2 x 2-1/8 x 2-1/8 inches min. complying with NEMA standards.

SCOREBOARD

Type: Interior, multi-purpose basketball/volleyball/wrestling electronic scoreboard with two integral horns, changeable captions, LED displays for time, scores, period, number of player fouling with personal fouls, team fouls, bonus and double bonus indicators, and next possession arrows; **Model 2750** as manufactured by Nevco Inc. No captions shall be applied directly to the face of the scoreboard. All caption plates will be changeable and made of polyvinylchloride with vinyl lettering applied. All captions shall be rear lit.

Size: 8 feet long x 6 feet high x 8 inches deep.

Approximate hanging weight: 130 pounds.

Captions: 6 inches high:

Basic: "Home", "Guests", and "period".

Basketball: "fouls" and "player".

Volleyball: "won" and "game".

Wrestling: "match" and "weight".

LED displays:

Timing: Super Bright Red or White 13 inches high digits with lit colon.

Team scores: Super Bright Amber or White 13 inches high digits.

Period: Super Bright Amber or White 9 inches high digits.

Player number with personal fouls, game, and weight: Super Bright Red or White 9 inches high digits.

MAIN GYMNASIUM IMPROVEMENTS
SANDERSON HIGH SCHOOL
Wake County Public School System

Team fouls, games won, and match: Super Bright Amber or White 9 inches high digits.

Next possession: Super Bright Amber or White arrow for each team.

Include bonus and double bonus in the form of a 4-inch Super Bright Red or White LED "B".

Rear-lit captions shall require zero maintenance.

Wall mounting attachments will be included.

Power requirement: All options included: 158 Watts, MAX, 100-240 Volts AC w/Power Factor Correction.

MPCW CONTROL CENTER

Type: Wireless, microprocessor based, operator's control center with receiver unit mounted at scoreboard and designed to operate different models of scoreboard by interchange of keyboard overlay; **Model MPCW-7** as manufactured by Nevco Inc. Console will operate earlier scoreboards from Nevco Inc.

Unit shall comply with Part 15 of FCC Rules regarding interference.

Console: High impact, break-resistant gray plastic 11 x 9-1/2 x 4-1/8 inches.

Features:

- Control can be used to operate both wireless and wired scoreboards.

- Power on-off switch.

- Split and raised 40 key keyboards, internal beeper acknowledging each entry, and bookmark capabilities.

- Keyboard overlays for basketball, volleyball and wrestling.

- Remote hand-held main time switch with integral horn button.

- Provide with LED displays, lithium cell battery backup to maintain scoreboard memory and time of day, self-test mode, power on-off switch, alternate time control, and multiple scoreboard operation.

- Timer features: Time of day display, multiple time out timers with warning, interval horn, upcount auto stop with horn, and 1/10th second display during last minute.

- Dimmer control for scoreboard.

Receiver: Sturdy impact resistant construction, 6 x 4 x 1.5 inches with 4-inch antenna and mounted at scoreboard.

Maximum range: 1,000 feet from control center to receiver.

Receiver shall require no additional source of power or separate control cable

Power adapters: Provide for each control center.

- Input: 120 volts, 0.4 amps, 50/60 Hz.

- Output: 9 volts, 1.67 amps, 15 watts.

Provide option of battery supply for control operation if utility power not available.

Provide carrying case for control center and hand-held switch; Model CC-3 as manufactured by Nevco Inc.

- Size: 18-1/2 x 14-1/2 x 6 inches.

- Construction: Double wall, high density black polyethylene with padded interior, mechanical latches, and hinges.

MPCX CONTROL CENTER

Type: Handheld wireless, basic, AA battery operated, sport specific, control center with receiver unit mounted at scoreboard; **Model MPCX2** as manufactured by Nevco Inc. Control will have operability with earlier scoreboards from Nevco Inc. Provide one unit for Basketball, one unit for Volleyball and one unit for Wrestling.

Unit shall comply with Part 15 of FCC Rules and Regulations.

Control unit: High impact, break-resistant black ABS plastic Size: 3-1/4" x 5-1/2" x 7/8"

Features:

- Wireless operation within 1000 feet.
- Operate multiple scoreboards simultaneously.
- System allows multiple controllers to link to individual scoreboards.
- High visibility LCD display with a sealed keyboard.
- Long battery life with indicator; include two AA batteries.
- Single hand operation with a no slip grip.
- Built-in belt clip.
- Wireless signal strength meter and internal antenna.

Receiver: Injection molded case, 5-1/2 by 3-3/4 by 2 inches mounted at scoreboard.

Maximum range: 1,000 feet from control center to receiver.

Receiver shall require no additional source of power or separate control cable.

Power adapters: Provide for each scoreboard receiver.

Input: 120 volts, 0.4 amps, 50/60 Hz.

Output: 9 volts, 1.67 amps, 15 watts.

Provide two (2) carrying cases for up to two control centers each, Model CC-4 as manufactured by Nevco Inc.

Size: 18-1/2 x 14-1/2 x 6 inches.

Construction: Double wall, high density black polyethylene with padded interior, mechanical latches, and hinges.

PART 3 - EXECUTION

PREPARATION

Verify exact scoreboard and control center quantities and junction box locations with Architect.

Coordinate requirements for electrical power, wall blocking, auxiliary framing and supports, suspension cables, and other components to be provided under other Specification Sections to ensure adequate provisions are made for complete, functional installation of scoreboards.

Coordinate scoreboard electrical requirements to ensure proper power source, conduit, wiring, and boxes are provided. Prior to installation, verify type and location of power supply.

INSTALLATION

Install scoreboards and accessories in accordance with manufacturer's instructions and approved installation drawings.

Before installation, field test scoreboards and accessories for operating functions. Ensure that scoreboards accurately perform all operations. Correct deficiencies.

Rigidly mount scoreboards and accessories level and plumb with brackets and fasteners.

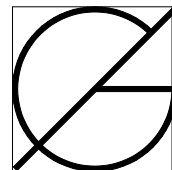
Clean exposed surfaces.

Protect scoreboards and finishes from other construction operations.

DEMONSTRATING AND TRAINING

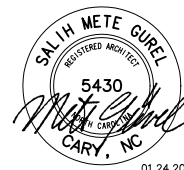
Provide demonstration and training session for Owner's representative covering operation and maintenance of electronic scoreboard.

END OF SECTION



GÜREL
ARCHITECTURE

1145B EXECUTIVE CIRCLE
CARY, NORTH CAROLINA 27511
T: 919.468.1717 F: 919.468.1716



± 10'-0" EXIST CEILING HEIGHT



EXIST COLUMN SEE
PLAN DETAIL BELOW

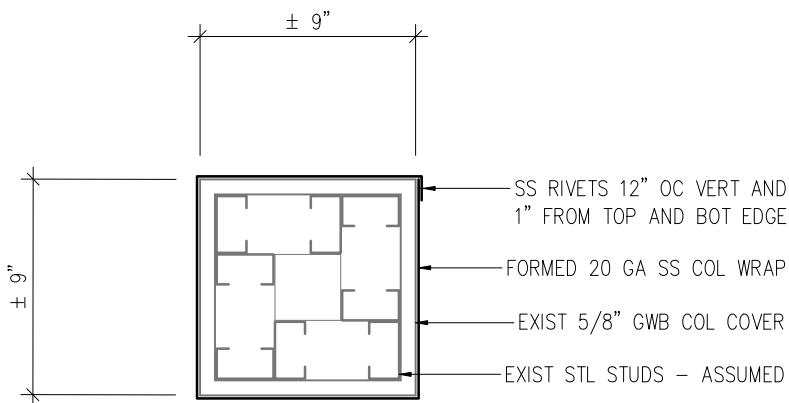
REPLACE RESILIENT
BASE TO MATCH
EXIST AFTER WRAP
INSTALLATION

EXIST VCT FLOORING TO REMAIN
PROTECT DURING CONSTRUCTION

EAST END OF CORRIDOR 169 LOOKING WEST

1. PHOTOGRAPH

NO SCALE



PROVIDE STAINLESS STEEL WRAP AT INDICATED EXISTING ± 9" SQ GWB COLUMN COVER. COVER WRAP SHALL BE 20 GA, 304 STAINLESS STEEL, #4 FINISH, FORMED WITH 1" OVERLAP AND LAMINATED ON EXISTING GWB COLUMN COVER AND SS RIVETED MAX 12" ON CENTER AT VERTICAL CENTER OF OVERLAP WITH MIN 1" TO BOT AND TOP EDGE. THE HEIGHT OF THE COVER WRAP SHALL MATCH CEILING HEIGHT (± 10'-0").

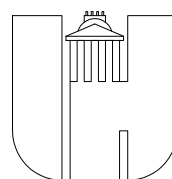
2. PLAN DETAIL

1 1/2" = 1'-0"

MAIN GYM IMPROVEMENTS

**SANDERSON
HIGH SCHOOL**

5500 DIXON DRIVE
RALEIGH, NC 27609



**WAKE COUNTY
PUBLIC SCHOOL SYSTEM**

RALEIGH, NORTH CAROLINA

COLUMN WRAP

ISSUED BY ADDENDUM NO. 2

DATE: 01.24.2024

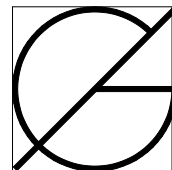
JOB NO: SHS-MGI

DRAWN BY: M. GÜREL

CHECKED BY: M. GÜREL

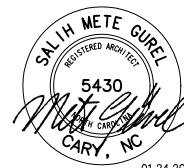
APPROVED: -

SK
NO: **A01**



GÜREL
ARCHITECTURE

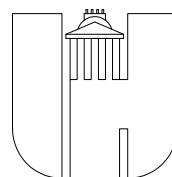
1145B EXECUTIVE CIRCLE
CARY, NORTH CAROLINA 27511
T: 919.468.1717 F: 919.468.1716



MAIN GYM IMPROVEMENTS

**SANDERSON
HIGH SCHOOL**

**5500 DIXON DRIVE
RALEIGH, NC 27609**



**WAKE COUNTY
PUBLIC SCHOOL SYSTEM**

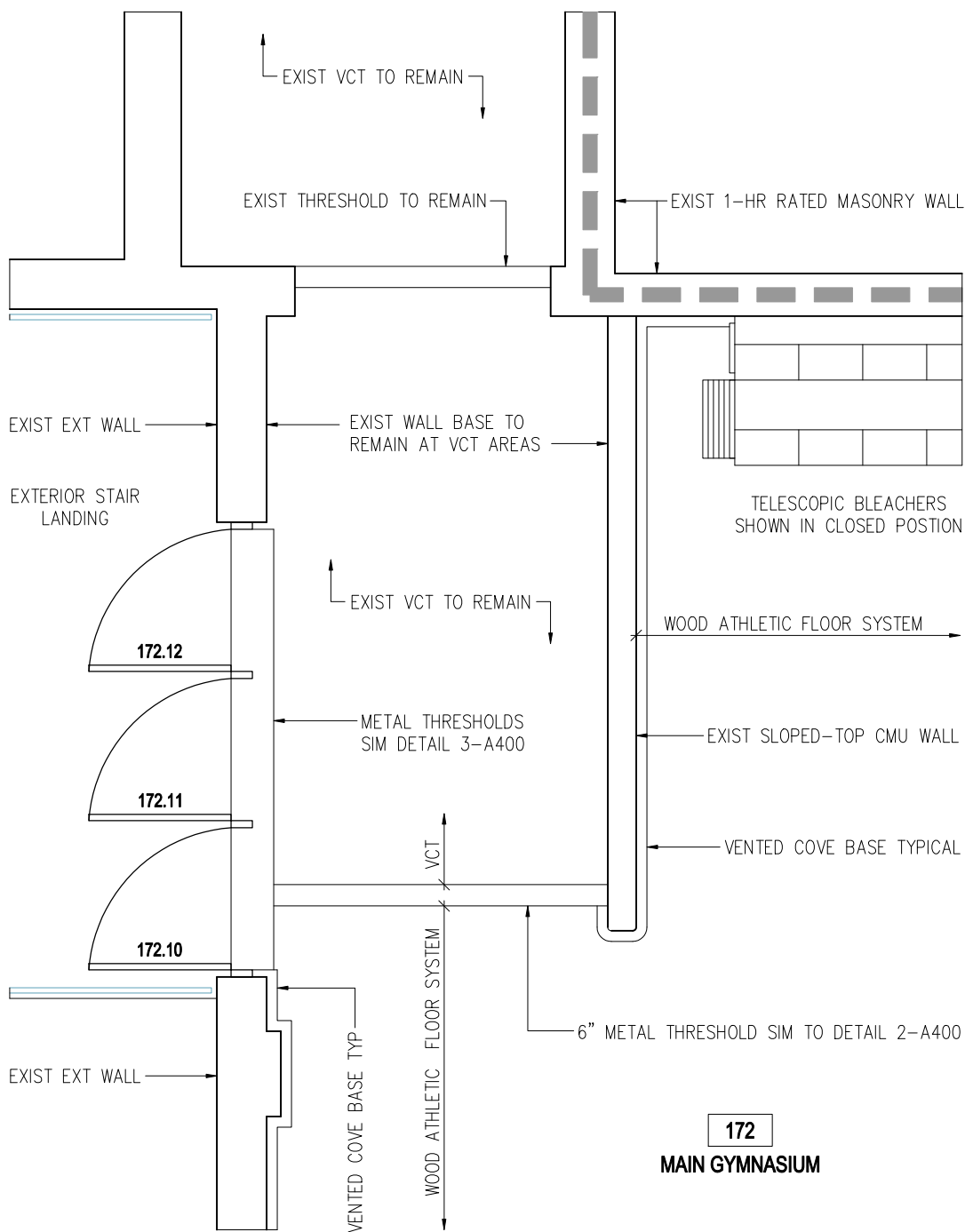
RALEIGH, NORTH CAROLINA

ENLARGED PLAN

ISSUED BY ADDENDUM NO. 2

DATE: 01.24.2024
JOB NO: SHS-MGI
DRAWN BY: M. GÜREL
CHECKED BY: M. GÜREL
APPROVED: -

SK
NO: **A02**



172
MAIN GYMNASIUM

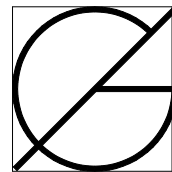
NE CORNER OF MAIN GYMNASIUM 172

**PROJECT
NORTH**

1

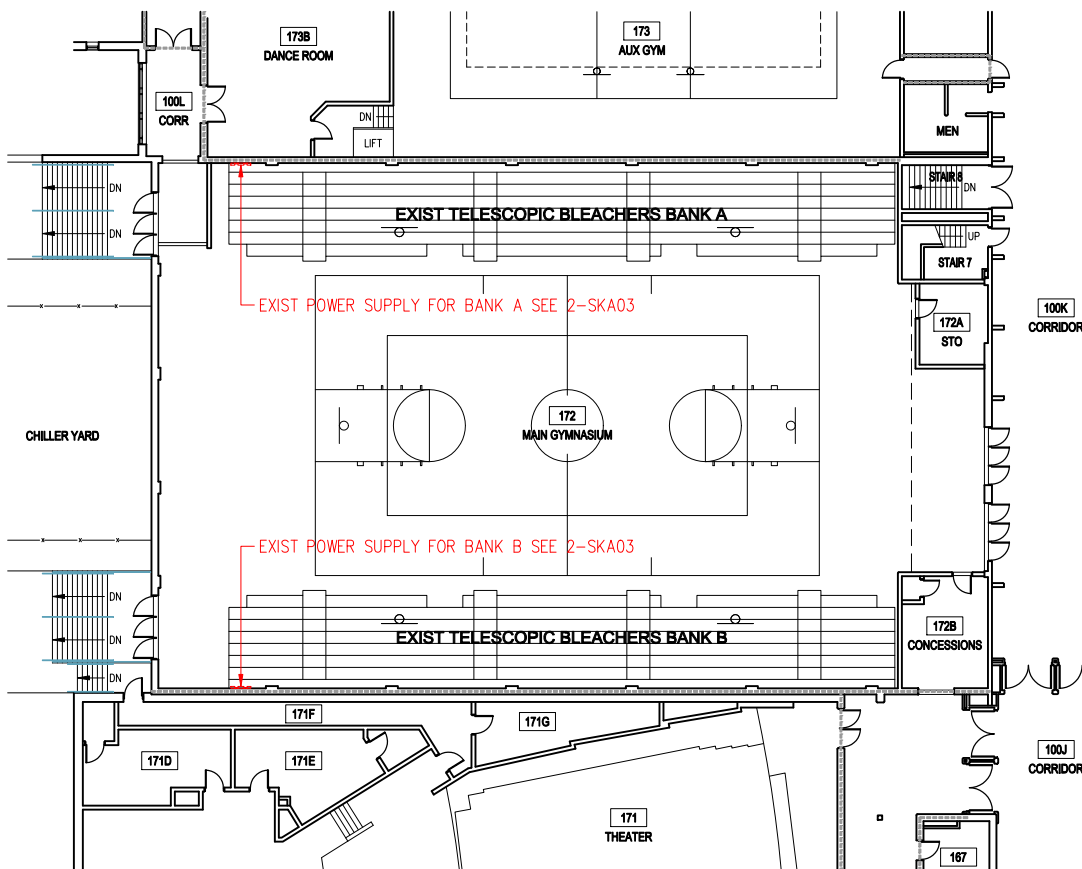
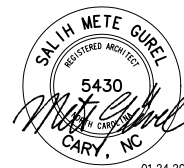
ENLARGED FLOOR PLAN

1/4" = 1'-0"



GÜREL
ARCHITECTURE

1145B EXECUTIVE CIRCLE
CARY, NORTH CAROLINA 27511
T: 919.468.1717 F: 919.468.1716



RESPONSES TO CONTRACTORS' RFI's

1. Currently the bleachers have a 14-week lead time and 2 weeks for install. The sub will need 2 weeks to prep for submittals after their contract is sent. This timeline with getting a contract with Wake County will push us over the schedule date. Is there a plan to do this scope of work on another date if the schedule cannot be done?

[Response: WCPSS increased the construction time. Please refer to Item 1, Addendum No. 2.](#)

2. I raised the question regarding the schedule as related to receiving a fully executed contract from Wake County in order for the GC to proceed with procurement, submittals and release of products for fabrication & delivery upon submittal approval(s) to facilitate the project schedule, especially regarding the seating lead time, however this applies to the entire scope of the project. Planning & preparation is essential to any renovation:

- 2.1. The project duration per the bid documents of 4/22 to 7/5 is 10 weeks, 5 days. In order to implement this schedule (not including seating), we would need at a minimum to have a fully executed contract in hand by 4/1/24, and the submittal review process by the architect would need to have a 1-week turnaround with no revise & resubmit returns. So, the 4/1 date is aggressive.

- 2.2. Wood flooring Procurement after award + submittal prep = 3-4 weeks, plus 1-week submittal review & return + 3-4 weeks wood floor materials lead time plus 5-6 weeks installation & finishing time = a total of 15 weeks.

- 2.3. The seating timeline is as follows as confirmed with the bidders: Procurement & shop drawing prep= 3-4 weeks, plus 1 week submittal review & return + 14 weeks materials lead time plus 2-3 weeks installation & finishing time = a total of 22 weeks.

- 2.4. We offer/recommend 1 of 2 alternative schedules:

- 2.4.1. Bid on 2/1, issue Notice of intent to award 2/2, and have the executed contract completed/approved by 4/1 in order for the GC to commence 4/22 and complete the scope of work (less seating) by 7/5. Seating installation then to be coordinated with SHS by the end of 4th quarter through GC with exact dates determined/coordinated at a later date.

- 2.4.2. Bid on 2/1, issue Notice of intent to award 2/2, plan on contract execution expected by 4/22: This Allows time for the procurement, submittal & fabrication process. Plan/coordinate a Schedule a start date end of summer/early fall when materials are available that best works with the school's calendar and maintain the original planned schedule durations of 10-1/2 weeks until substantial completion.

[Response: WCPSS increased the construction time. Please refer to Item 1, Addendum No. 2.](#)

3. There is existing VCT flooring at the NE corner of the GYM (by doors 172.10, .11 & .12) (Reference Attachment A). The plans indicate existing wood flooring to be removed & new wood flooring to be installed in its place? Please review and confirm that the VCT is to be removed and what type of flooring is to be installed in its place, since the depth of the wood flooring system does not appear that it will work at this location.

[Response: Existing VCT flooring to remain. Please refer to Item 4 of Addendum No. 2.](#)

- 3.1. Also, has the age of this flooring been confirmed (i.e. no hazardous materials present).

[Response: The latest renovation to Gymnasium took place in 2000. The project record documents do not indicate any hazardous materials. However, contractor shall notify WCPSS without delay if a suspect hazardous material is encountered during the construction.](#)

- 3.2. There is an existing threshold in the picture attachment A attached that is an existing VCT to VCT transition. Please confirm/clarify if this is to be replaced?

[Response: Existing threshold at VCT to VCT transition shall remain.](#)

**MAIN GYMNASIUM IMPROVEMENTS
SANDERSON HIGH SCHOOL
Wake County Public School System**

4. Reference A300, Elevation Note 6: "Remove all abandoned circuits & Junction Boxes". Has anyone determined which circuits & junction boxes are abandoned so we are able to quantify & price accordingly? If not is this work to be performed as part of the contract allowance #1?
Response: Remove obvious abandoned conduits and junction boxes, i.e. open-ended conduits or open junction boxes with no plates and wiring. All others can be per Allowance No. 1 per owner's approval.
5. Bid form subcontractor Listing; Plumbing & Mechanical will be "NA". For Electrical, since the scope of work is unknown & an allowance this "naming" at the time of bid cannot be determined. Should would write in "TBD"?
Response: TBD is acceptable.
6. In the Theater Corr Room 169; Other than painting the doors & frames indicated, is there any other scope of work in this area?
Response: Stainless steel column wrap is required. Please refer to Item 3 of Addendum No. 2.
7. The painting spec 099000 page 5 requires exposed to view mechanical & electrical items to be painted. The plans indicate exposed conduit & electrical boxes on the walls to be painted also get painted.
7.1. Please clarify that no overhead painting of mechanical/electrical items are included in the scope of work (items in the exposed ceiling area).
Response: Overhead painting of mechanical and electrical items is not required.
8. Painting of existing CMU in the GYM; It was observed that there are numerous old anchors & old anchor holes throughout the CMU. Are the old anchors to be removed and all holes patched prior to painting? (see photo example attached).
Response: Remove old anchors and patch CMU anchor holes prior to painting.
9. The south elevation on A300 indicates to repaint the logo & lettering on the GWB bulkhead below the windows. Is the bulkhead & related soffit also to be painted (see attached photo)? If so, we recommend that the drywall bulkhead & soffit be pointed up before painting.
Response: The entire GWB bulkhead including the soffit and the returns shall be painted. Point up GWB surfaces prior to painting.
10. See attached photo image 4773: This is the head over the cased opening at the north east corner of the gym, and this CMU is scheduled to be painted. We would recommend adding a note to repair the CMU & mortar joints in these areas prior to painting.
Response: Repair CMU course and mortar joints above the steel lintel prior to painting.
11. Can you please confirm if you want oil-based wood floor seal and finish or if you want water-based wood floor seal and finish?
Response: Per WCPSS guidelines, transparent finish shall be a polyurethane co-polymer with the following characteristics: Solids 42%. Volatile Contents 58%. Carrier: De-sulfurized Aliphatic solvent. Application rate: 350 - 400 square feet per gallon.
12. Will it be acceptable to provide an equivalent product in leu of the three approved products listed for Wood Athletic Floor System (Aacer Cush II system, Aacer Flooring, LLC; Duracushion I system, ConnorSports Flooring Corporation; Bio Cushion Classic system, Robbins Sports Surfaces)?
Response: Please submit a substitution request for the proposed product. The procedure for the substitutions was outlined in the Pre-Bid Meeting Agenda, issued with Addendum No. 1 with references to the Section A, Information for Bidders and the Section GC, General Conditions.
13. They have an exterior paint spec specified for the Gym CMU walls. Please see if the architect would like to modify.
Response: The interior CMU wall paint schedule is revised. Please refer to Item 7, Addendum No. 2.
14. Do you have an estimated budget on this project?
Response: Estimated budget is within \$600K to \$700K range.

15. After speaking with several vendor/manufacturers on lead times for the sports flooring and seating, the project duration seems tight.

Sports Flooring (demo, acquire material, install, logos, court striping, finishing 8-10 weeks after approval).

Telescopic Seating (10-12 weeks after approved submittals, 2 weeks for installation).

After running a rough preliminary schedule with the anticipated Notice to Proceed on April 22nd this throws the project completion in August. Realistic duration would be between 18-20 weeks.

Has the school investigated holding events elsewhere to provide a more reasonable project duration?

Per the bid documents the General Contractor is to retain the services of an Electrical and Mechanical Engineer if needed to provide guidance or design on possible existing issues with the HVAC and Electrical that may arise. Has this been considered on the project duration? If an Engineer or Engineers is required, they will need to do their due diligence to determine the correct course of action.

It is my understanding that existing mural and logos are going to be replaced with something different. Will they be providing a new design prior to bidding? If not, this is something that may delay the schedule if the GC is to have his/her artists design something.

Response: WCPSS increased the construction time. Please refer to Item 1, Addendum No. 2. There will not be HVAC work included in this contract. Please refer to Item 10, Addendum No. 2. The mural and logo designs will not be available prior to bid. Contractors shall include in their bid for replicating the existing mural, game lines and court logos. Please refer to Items 6 and 7 of Addendum No. 1.

16. Will the school system be willing to incorporate a "Force Majeure" clause in the contract?

Response: WCPSS would not change the general conditions of the contract to include force majeure. Is there a reason why the contractor would request this? Was any context provided for this request?

17. Insurance and Bonds: Will this be required? 9.1.1.7 Contractor's Pollution Liability:

Contractor shall obtain and maintain in effect during the term of this Agreement a policy of pollution liability including mold as applicable to the specific project in the minimum amount of \$1,000,000 each claim, \$2,000,000 policy aggregate.

This coverage may be placed via combined Contractor's Professional and Pollution Liability policy, separate Contractor's Pollution Liability policy or by use of the Limited Jobsite Pollution Liability endorsement to the Commercial General Liability policy.

Continuous coverage shall be maintained in force for a period of six (6) years following the date of Final Completion of the Work. Contractor is responsible for any applicable deductible. Pollution liability insurance is not required for modular/mobile projects. 2. a. a. 4.

Response: The paragraph is included in the school's general conditions. The contractor should plan to provide this pollution insurance.

18. Division 079000 Joint Sealers. The Sealants specs call for: The sealing of joints indicated on schedule at the end of this section.

The sealing of exterior joints, including Joints around perimeter of frames.

The sealing of interior joints, including: Wall joints, Joints around perimeter of frames, the sealing of other joints indicated on drawings.

Are there exterior elevation drawings? I only see 1 Vertical joint on the interior East elevation. Are there more? There is a 200 linear foot allowance to be included in the Base Bid. Is that the entirety of the sealants or an additional quantity? Do the window frames receive sealants? Specs call for Dowsil 795 or similar. Paint for the gym walls will not adhere to silicone products as specified. Dow Corning makes a paintable silicone product, should I use that?

Response: There is no sealant work shown on the drawings. Contractors shall include 200 lineal foot of sealant in their Base Bid. The sealant shall be high strength silicone sealant equal to Dowsil 795. If required by the owner, this work shall be performed at locations as directed by the owner.

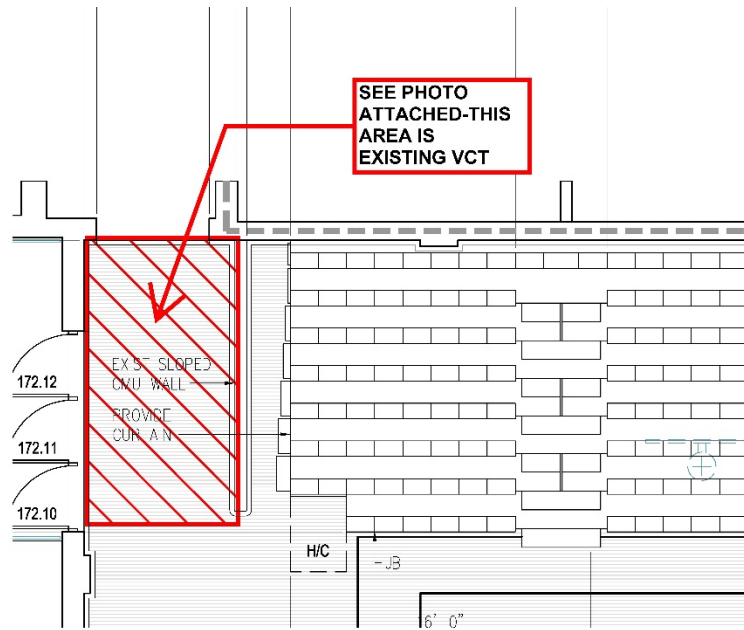
**MAIN GYMNASIUM IMPROVEMENTS
SANDERSON HIGH SCHOOL
Wake County Public School System**

19. Division 26000 Electrical. Can you confirm the new telescopic seating has the same power requirements as existing? Are we to include in our base bid to just disconnect and reconnect existing power, assuming new seating has the same connection points and power requirements as existing?
Response: Please refer to Item 5 of Addendum No. 2. The existing telescopic seating was manufactured by Hussey Seating Company which is also the Basis of Design manufacturer specified for this project.
20. I noticed notes on the plans indicating remove all abandoned circuits and junction boxes, with no electrical plans are we to use the allowance to cover the cost?
Response: Remove obvious abandoned conduits and junction boxes, i.e. open-ended conduits or open junction boxes with no plates and wiring. All others can be per Allowance No. 1 per owner's approval.
21. Sheet A200. Plan Note # 5 indicates install metal threshold and metal transition strips. Refer to specifications. I don't see in the project manual a division 8, please provide more information/specification for threshold and transition strip along with locations for this note.
Response: Please refer to Items 11 and 12 of Addendum No.2.
22. HVAC. What is the extent of the HVAC repairs? If repairs are required is their access to HVAC units from catwalks or will a lift be required? If lift is required will the existing floor support the weight? I noticed there is a basement under part of the gym.
Response: There is no HVAC work included in this project. Please refer to Item 5 of Addendum No. 1 and Item 10 of Addendum No. 2.
23. Please confirm the GC can use the area around the chiller yard for dumpsters and porta-jons.
Response: Please refer to Item 9 of Addendum No. 1: Contractors may use the exterior area adjacent to the Northwest exit stairs from the Gymnasium for the dumpster location, provided that this area is separated from the student access with safety fencing, the access to the modular classrooms is not blocked and the area is restored to its original conditions after the demolition activity is completed. The exact location of the portable toilets shall be as approved by the school during the Pre-Construction meeting.
24. Will the GC be required to provide temporary power and water, or can we use the school's power and water?
Response: The school will not provide power or water. It is up to the contractor to provide the required electrical or water services needed to complete the project. The contractor may use the power or water that is available in the work area.
25. Please confirm this will not require a building permit from the City of Raleigh.
Response: The building permits for this project shall be issued by Wake County, Permits, Development and Inspection Department. Since there will be no site or exterior work in the scope of this project, site plan approval from the City of Raleigh is not required.
26. Sheet A300. Detail (2) there is a note to replace missing "S" letter please provide more detail on existing to provide a match.
Response: The intention is to match the existing lettering of "SPARTANS". The missing last letter "S" was recently added and the owner was not pleased with the match. Please match the existing first letter "S" to replace the last letter "S".

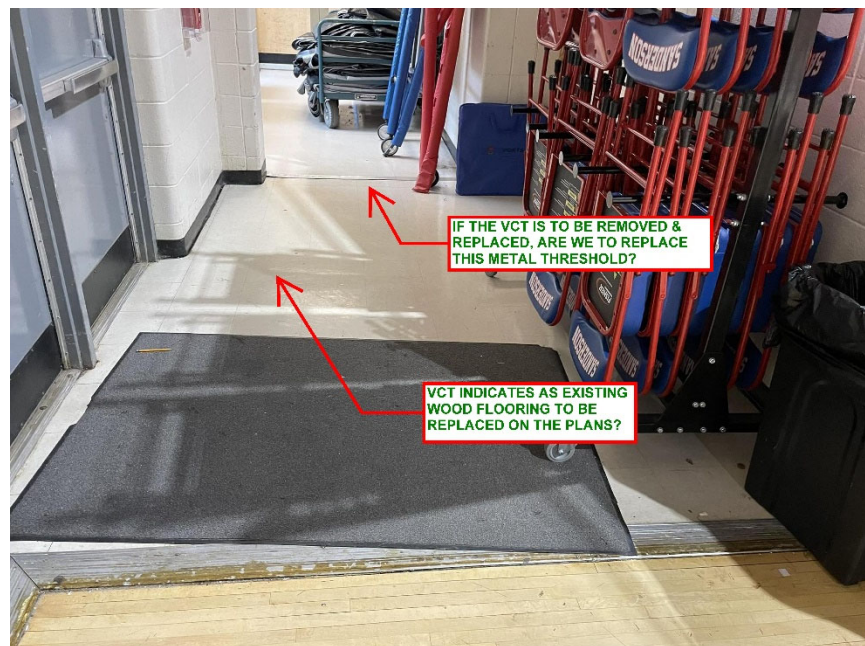
Encl. Photograph Attachments received with RFI's (3 Pages)

END OF RESPONSES

CONTRACTORS' RFI ATTACHEMENTS



ATTACHMENT A, REFER TO RFI ITEM 3



ATTACHMENT A, REFER TO RFI ITEM 3

**MAIN GYMNASIUM IMPROVEMENTS
SANDERSON HIGH SCHOOL
Wake County Public School System**



REFER TO RFI ITEM 8

**MAIN GYMNASIUM IMPROVEMENTS
SANDERSON HIGH SCHOOL
Wake County Public School System**



REFER TO RFI ITEM 9



IMAGE 4773, REFER TO RFI ITEM 10

END OF ATTACHMENTS

PREVIOUS FLOOR REPAIRS – Photos provided by the Owner

