



Eddy Building – Detached Addition : Addendum #2

DATE: October 8, 2024

Hobbs Architects, PA
159 West Salisbury Street
PO Box 1457
Pittsboro, North Carolina 27312

ADDENDUM #2:

TO: All bidders of record, which have received plans and specifications for the project referred to above.

This Addendum No. 2 forms a part of the Contract Documents and modifies the original Drawings and Specifications dated September 6, 2024, as noted below. Acknowledge receipt of this addendum in the space provided on the Bid Form. Failure to do so may subject bidder to disqualification.

This addendum consists of 4 pages of information including structural markups.

General:

- A. **The Bid Date is October 23 at 1:30 pm at the front desk of the Donald W. Eddy Building, 4300 Reedy Creek Rd, Raleigh, NC 27607**
- B. All email correspondence should be sent to the following:
 - Chevon Moore, Hobbs Architects, at cmoore@hobbsarchitects.com
 - Krista Millard, Hobbs Architects, at kmillard@hobbsarchitects.com

Clarifications/Questions and Answers:

1. Question: Will any additional framing be required to secure the interior impact resistant gypsum wall board (beyond the PEMB girts).
 - o RESPONSE: All Interior drywall shall be removed from the project.
2. Question. Show alternates on ALL plan sheets including structural sheets. S drawings do not identify alternates.
 - o RESPONSE: Please see the attached marked up structural drawings for indications of what portions are part of various bid alternates.
3. Question: Does sheet L-602 apply to this project? Don't see any piping or precast boxes on drainage plan
 - o RESPONSE: L-602 shall be removed from the project set. It does not apply to this project.
4. Need some clarification on the Alternate Platform. S112 – Note 6: Pre-mfg. galv steel platform 10x6' - S301 – Shows a concrete platform. Can you clarify this platform – steel or concrete?
 - o RESPONSE: Key Note 6 on S-112 is calling out the manufactured galvanized steel platform landing at the top of the lift. This steel platform is interior to the building. Section 3/S-301 is a section through the exterior elevated walkway that is concrete (see section tag on S-112 for where this detail is taken).

END OF ADDENDUM #2

WALL FOOTING SCHEDULE				
MARK	SIZE		REINFORCING	
	WIDTH	DEPTH	CONTINUOUS	TRANSVERSE
WF3	3' - 0"	1'-0"	(4) #4 BOT	#4 AT 24" OC BOT

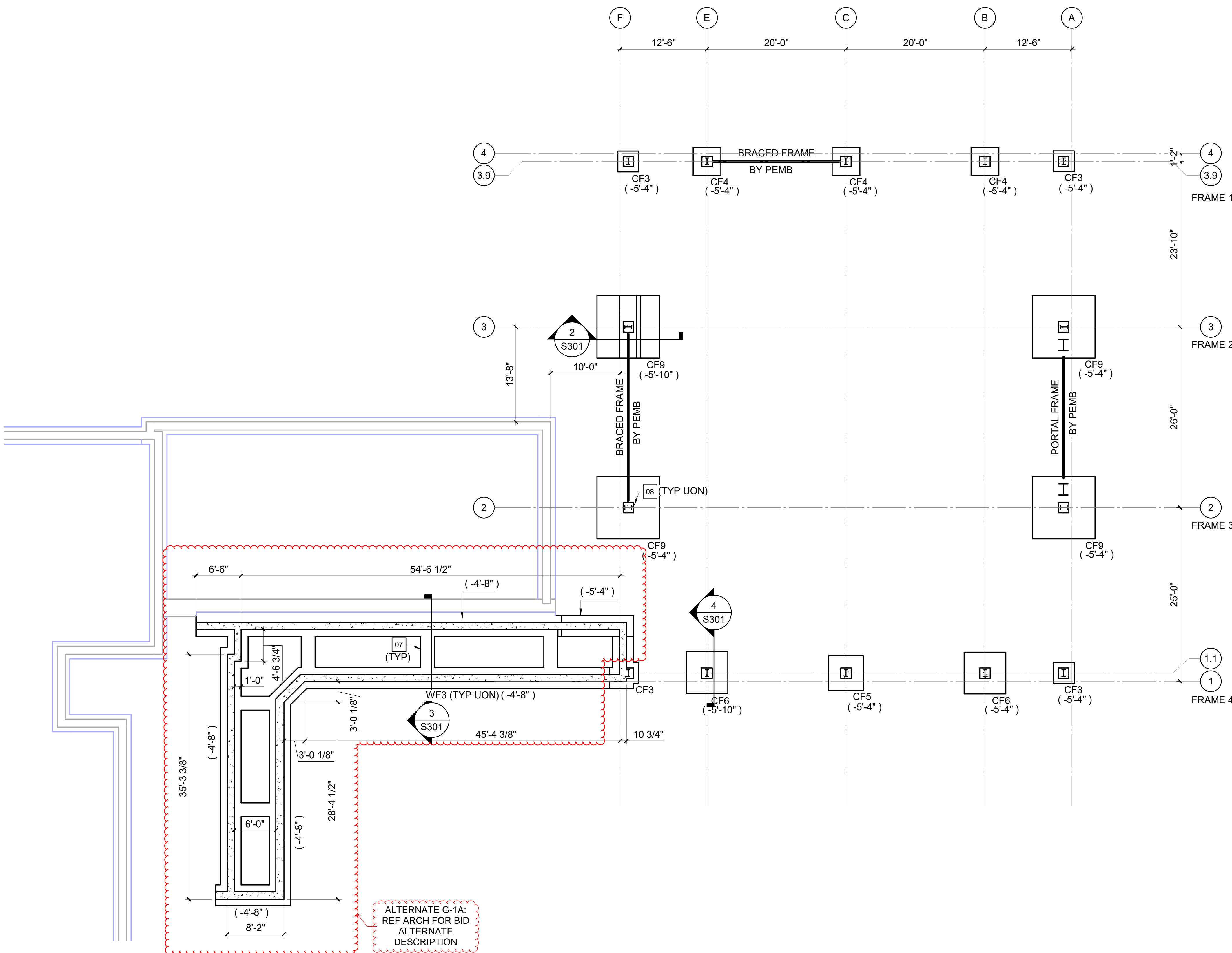
COLUMN FOOTING SCHEDULE					
MARK	SIZE			REINFORCING	
	LENGTH	WIDTH	DEPTH	BOTTOM	TOP
CF3	3' - 0"	3' - 0"	1'-6"	(4) #5 EW	(4) #5 EW
CF4	4' - 0"	4' - 0"	1'-6"	(5) #5 EW	(5) #5 EW
CF5	5' - 0"	5' - 0"	1'-6"	(6) #5 EW	(5) #5 EW
CF6	6' - 0"	6' - 0"	1'-6"	(7) #5 EW	(7) #5 EW
CF9	9' - 0"	9' - 0"	1'-6"	(10) #5 EW	(10) #5 EW

FOUNDATION PLAN NOTES

- A. REFERENCE ARCHITECTURAL DRAWINGS FOR DIMENSIONS TO NONBEARING WALLS, WALL CONTROL JOINTS AND OPENINGS.
- B. UNLESS OTHERWISE NOTED, ALL ELEVATIONS ARE BASED ON A FINISHED FIRST FLOOR REFERENCE OF 0'-0". ACTUAL FINISHED FLOOR ELEVATION IS 447.5'. REFERENCE ARCHITECTURAL DRAWINGS FOR FINISHED FLOOR MATERIALS.
- C. TOP OF ALL FOOTINGS MUST BE AT ELEVATION -4'-8" UNLESS OTHERWISE NOTED.
- D. NOT ALL UTILITY LOCATIONS ARE SHOWN ON PLAN. THE CONTRACTOR MUST COORDINATE THE LOCATIONS, SIZES, AND INVERTS OF UTILITIES. AT LOCATIONS WHERE UTILITIES PASS BELOW THE TOP OF FOOTING ELEVATION, STEP THE TOP OF FOOTING DOWN ON EACH SIDE PER THE "STEPPED FOOTING DETAIL" AND SLEEVE THE UTILITY THROUGH THE FOUNDATION WALL. THE CONTRACTOR MAY, AT HIS/HER OPTION, SLEEVE THE UTILITY THROUGH THE FOUNDATION PER THE "UTILITY SLEEVE DETAIL".
- E. UNLESS OTHERWISE INDICATED, EXTEND WALL FOOTINGS A MINIMUM OF 6 INCHES BEYOND ENDS OF WALLS.
- F. WHERE PIPE AND UTILITIES CROSS PERIMETER FOUNDATIONS, REFER TO "TYPICAL PIPE PENETRATION THROUGH PERIMETER FOOTING DETAILS." PIPES AND UTILITIES SHALL NOT RUN UNDERNEATH COLUMN FOUNDATIONS.

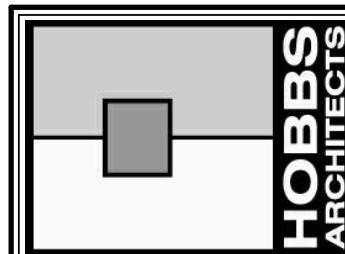
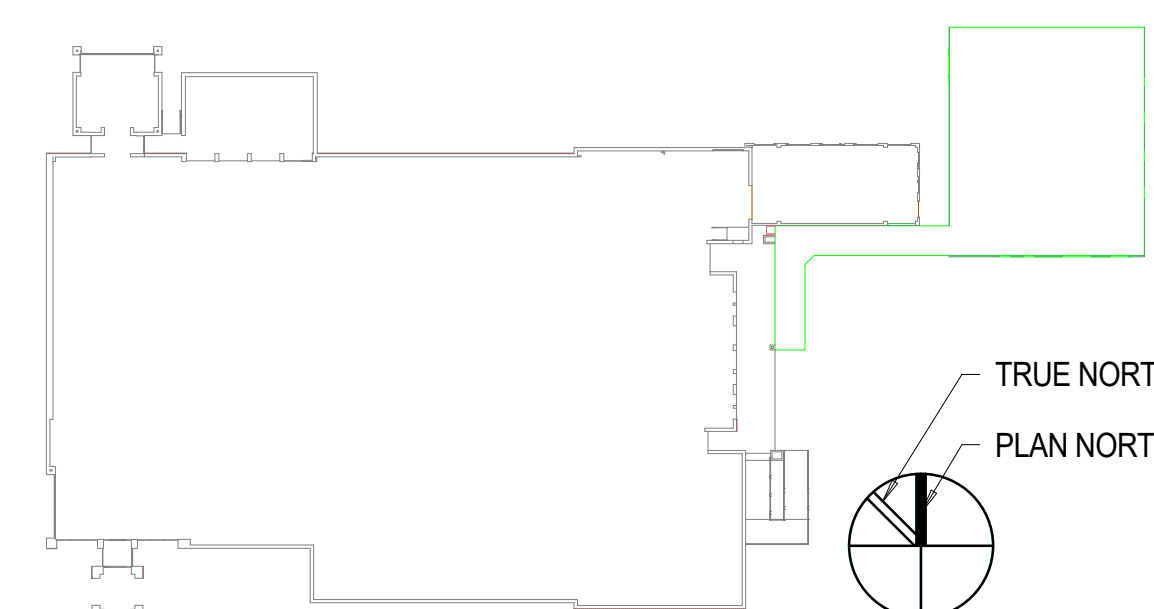
KEY NOTES

- 07 24" WIDE x 12" DEEP GRADE BEAM WITH (4) #5 CONTINUOUS REINFORCING TOP AND BOTTOM.
- 08 18" CONCRETE PEDESTAL.
- X1 EXISTING WALL.



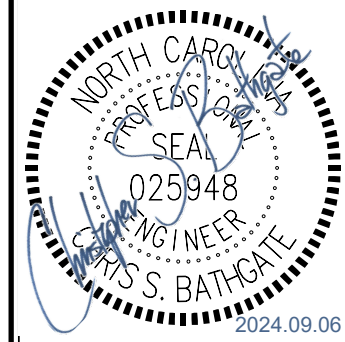
1 FOUNDATION PLAN
1/8" = 1'-0"

KEY PLAN



HOBBS ARCHITECTS, PA
Architects & Consultants
159 West Salisbury Street
PO Box 1457
Pittsboro, North Carolina 27312
Voice: (919) 545-2004
www.hobbsarchitects.com

lynchmykins
Structural Engineers
125 Elm St., Suite 205
Greensboro, NC 27401
336-339-1702 - lynchmykins.com
LA Project Number: LM23.046



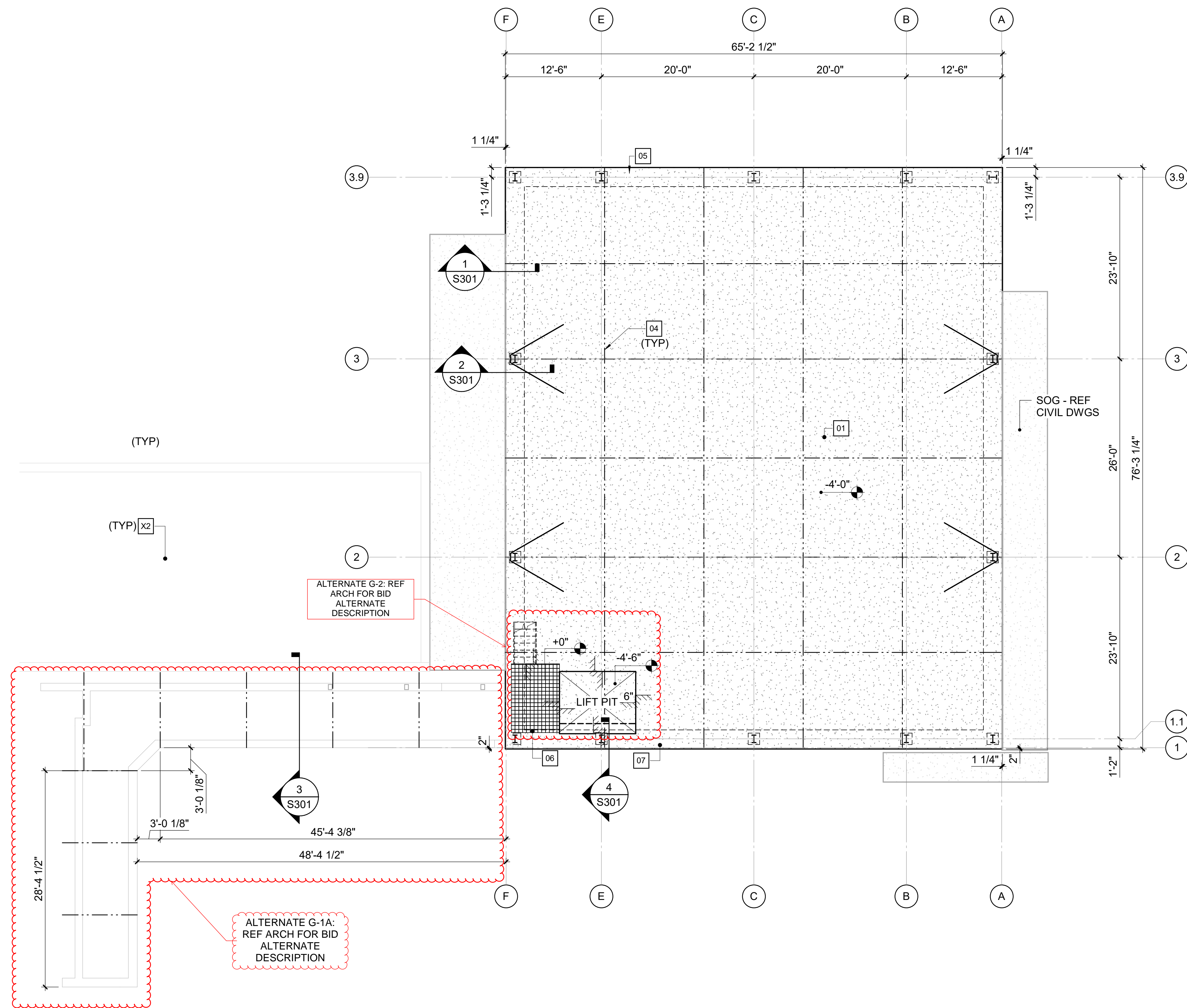
NEW PROJECT FOR
NC DEPT. OF AGRICULTURE & CONSUMER SCIENCES
SCO ID#: 22-24471-02A
EADDY BUILDING DETACHED ADDITION
4300 REEDY CREEK RD., RALEIGH, NC 27607

No.	Date

FOUNDATION PLAN

DATE
09-06-24

S111



1 SLAB PLAN
1/8" = 1'-0"

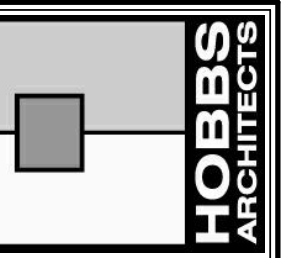
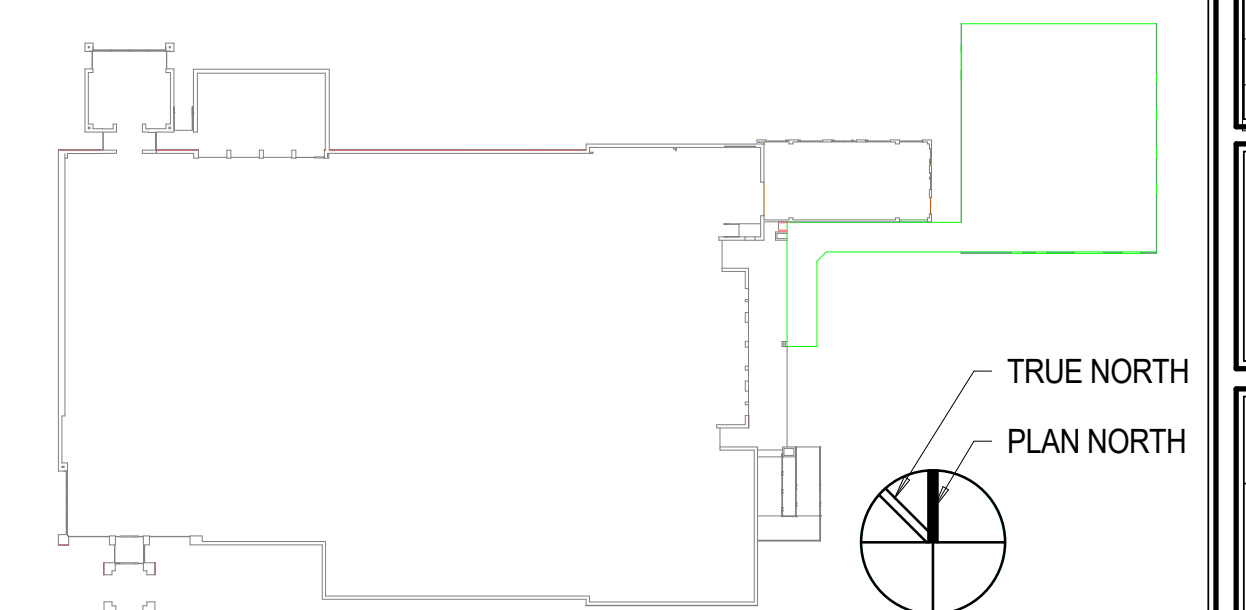
SLAB PLAN NOTES

- A. REFERENCE ARCHITECTURAL DRAWINGS FOR DIMENSIONS TO NONBEARING WALLS, WALL CONTROL JOINTS AND OPENINGS.
- B. UNLESS OTHERWISE NOTED, ALL ELEVATIONS ARE BASED ON A FINISHED FIRST FLOOR REFERENCE OF 0'-0". ACTUAL FINISHED FLOOR ELEVATION IS 447.5'. REFERENCE ARCHITECTURAL DRAWINGS FOR FINISHED FLOOR MATERIALS.
- C. REFERENCE ARCHITECTURAL DRAWINGS FOR EXACT LIMITS OF SLAB DEPRESSIONS AND OMITTED SLABS.
- D. DIMENSIONS SHOWN ON FOUNDATION PLAN ARE TO COLUMN GRIDLINES AND OUTSIDE FACE OF FOUNDATION WALLS, UNLESS OTHERWISE NOTED
- E. FLOOR SINKS AND DRAINS ARE NOT SHOWN ON PLAN. REFERENCE PME DRAWINGS FOR LOCATIONS.
- F. REFERENCE CIVIL AND LANDSCAPE DRAWINGS FOR EXTERIOR CONCRETE SLABS AND PAVING.
- G. SLAB-ON-GRADE JOINTS MUST BE SAWED JOINTS OR FORMED CONSTRUCTION JOINTS, UNLESS OTHERWISE NOTED. CONTRACTOR MUST COORDINATE ALL SLAB JOINTS WITH JOINTS IN BONDED FLOOR FINISHES. REFERENCE ARCHITECTURAL DRAWINGS FOR FLOOR FINISH JOINT LOCATIONS.
- H. PLACE (1) #4 x 3'-0" IN MIDDLE OF SLAB AT RE-ENTRANT CORNERS WHERE A SLAB JOINT DOES NOT OCCUR.

KEY NOTES

- 01 6" CONCRETE SLAB-ON-GRADE OVER VAPOR RETARDER AND 4" DEPTH OF POROUS FILL UNLESS OTHERWISE INDICATED. REINFORCE SLAB WITH 4x4-W2.9xW2.9 WELDED WIRE REINFORCING PLACED 1 1/2" CLEAR BELOW TOP OF SLAB. MAINTAIN REINFORCEMENT IN POSITION ON BOLSTERS, CHAIRS OR SPACERS DURING CONCRETE PLACEMENT SPACED NOT MORE THAN 24" O/C.
- 02 6" CONCRETE SLAB-ON-GRADE OVER 4" DEPTH OF POROUS FILL UNLESS OTHERWISE INDICATED. REINFORCE SLAB WITH #4 AT 16" OC EACH WAY LOCATED 2" CLEAR BELOW TOP OF SLAB AND #5 AT 16" OC SHORT WAY LOCATED 1-1/2" CLEAR FROM BOTTOM OF SLAB STAGGERED WITH TOP BARS. MAINTAIN REINFORCEMENT IN POSITION ON BOLSTERS, CHAIRS OR SPACERS DURING CONCRETE PLACEMENT.
- 04 DOWELED CONTROL JOINT - LOCATION CRITICAL DUE TO HAIR PINS. LOCATION OF BRACED FRAME. SEE PEMB DRAWINGS FOR END BAY DESIGN. END BAYS HAVE NOT BEEN DESIGNED FOR FUTURE BUILDING EXPANSION.
- 06 PRE-MANUFACTURED GALVANIZED STEEL PLATFORM 10'x6' WITH STAIR AND HANDRAILS. TOP OF PLATFORM = +4'-0". PROVIDE VERTICAL LIFT GATE AT HYDRAULIC LIFT.
- 07 24" WIDE x 12" DEEP GRADE BEAM WITH (4) #5 CONTINUOUS REINFORCING TOP AND BOTTOM.
- X1 EXISTING WALL.
- X2 EXISTING SLAB.

KEY PLAN



HOBBS ARCHITECTS, PA.
Architects & Consultants
159 West Salisbury Street
PO Box 1457
Pittsboro, North Carolina, 27312
Voice: (919) 545-2004
www.hobbsarchitects.com

lynchmykins
Structural Engineers
125 Elm St., Suite 205
Greensboro, NC 27401
336-339-1702 - lynchmykins.com
LA Project Number: LM23-046



NEW PROJECT FOR
NC DEPT. OF AGRICULTURE & CONSUMER SCIENCES
SCO ID#: 22-24471-02A

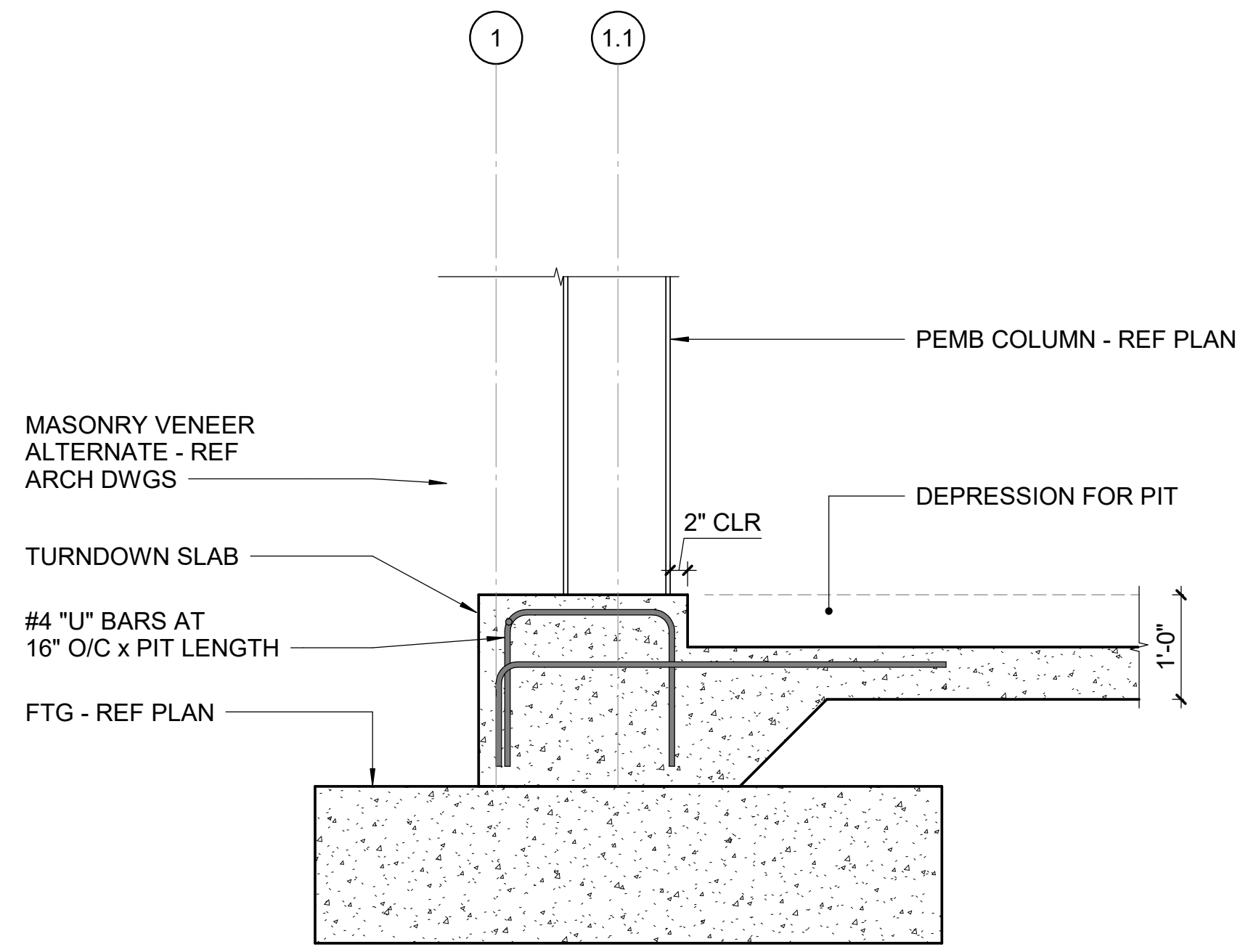
EADDY BUILDING DETACHED ADDITION
4300 REEDY CREEK RD., RALEIGH, NC 27607

No.	Date

SLAB PLAN

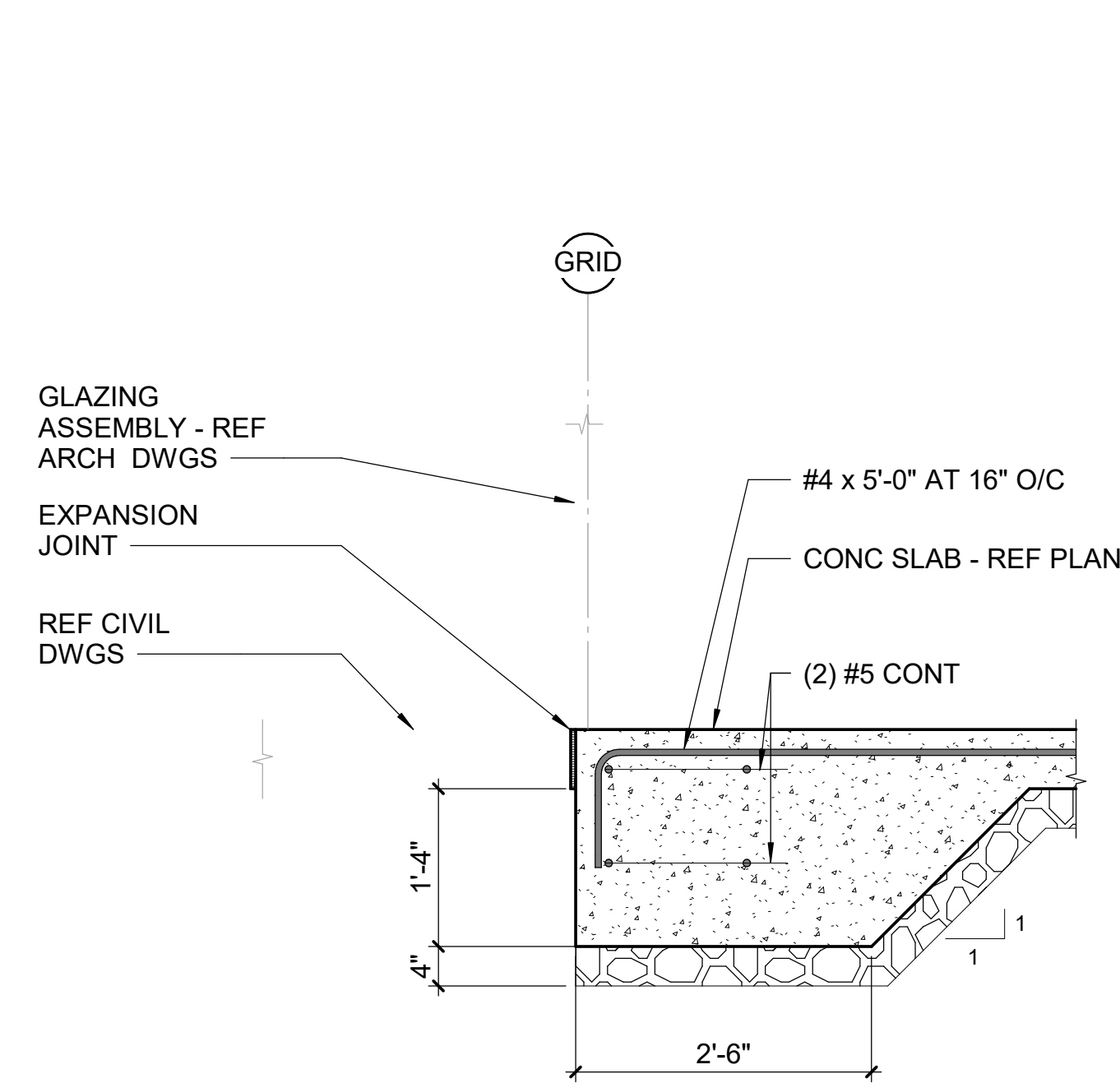
DATE
09-06-24

S112

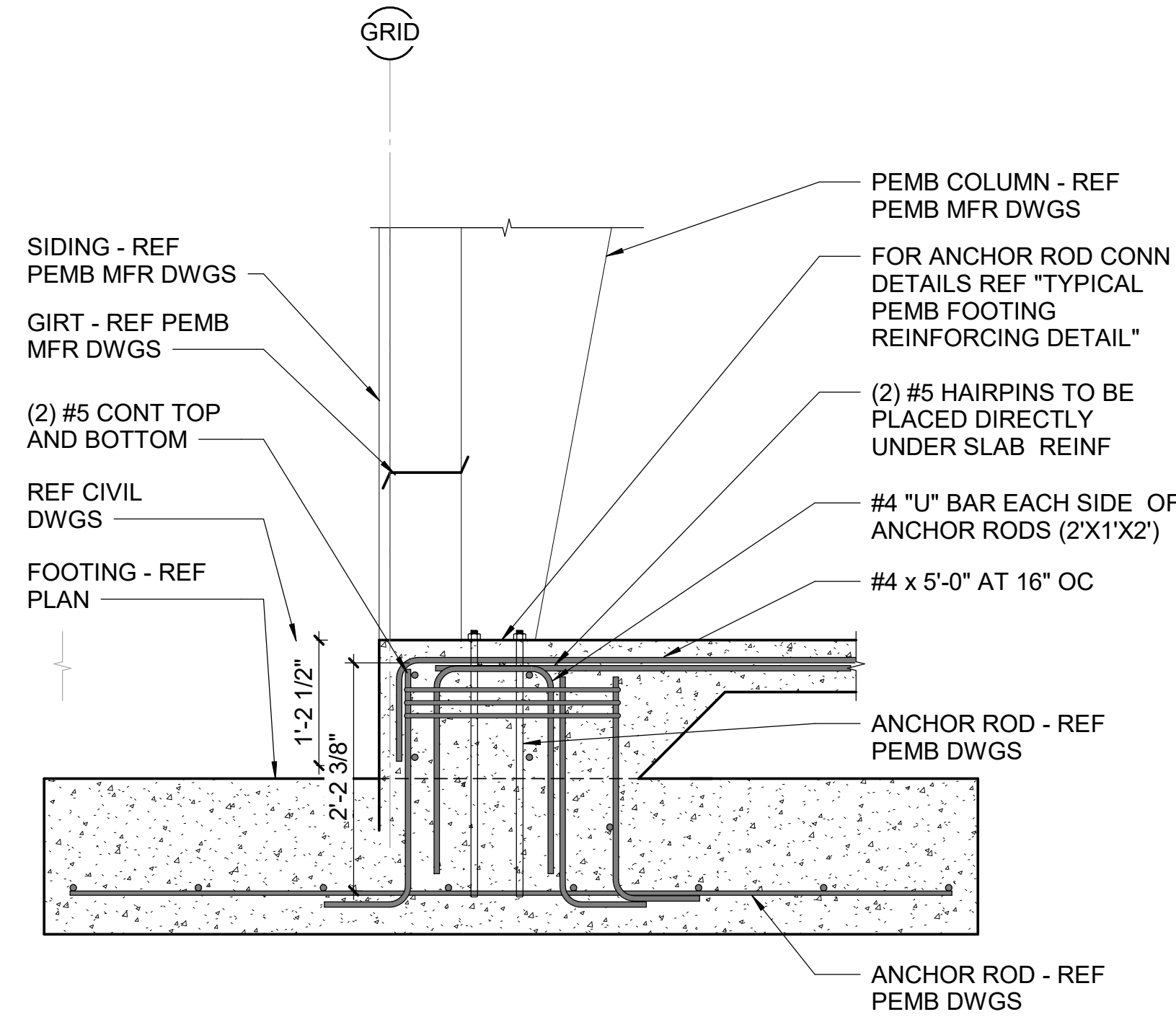


FOR DETAILS NOT SHOWN
REFERENCE 2/S301

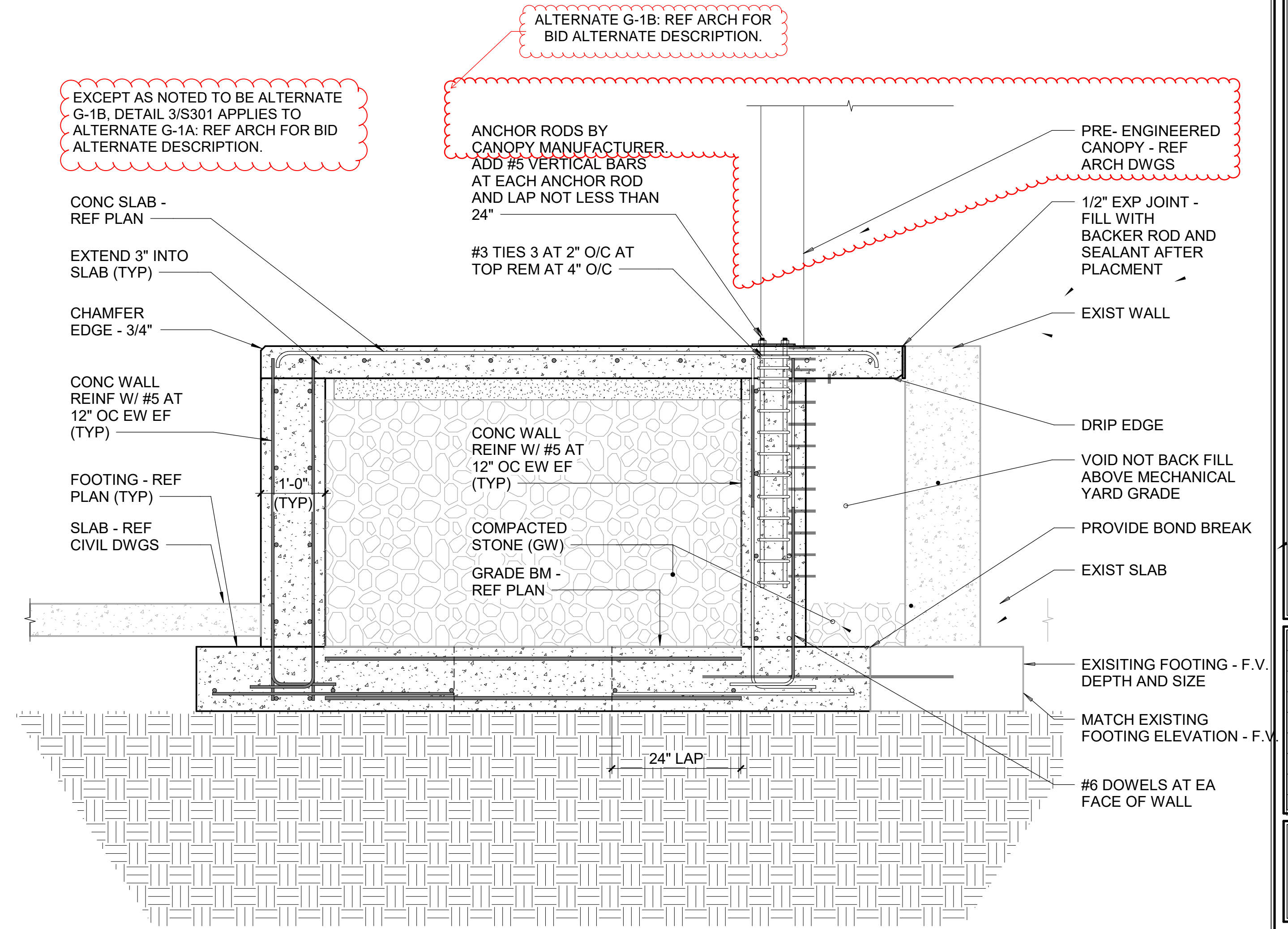
4 SECTION
3/4" = 1'-0"



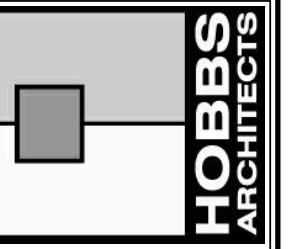
1 SECTION
3/4" = 1'-0"



2 SECTION
3/4" = 1'-0"



3 SECTION
3/4" = 1'-0"



HOBBS ARCHITECTS, PA
Architects & Consultants
159 West Salisbury Street
PO Box 1457
Pittsboro, North Carolina, 27312
Voice: (919) 545-2004
www.hobbsarchitects.com

lynchmykins
Structural Engineers
125 Elm St., Suite 205
Greensboro, NC 27401
336-339-1702 - lynchmykins.com
LA Project Number: LM23.046



NEW PROJECT FOR
NC DEPT. OF AGRICULTURE & CONSUMER SCIENCES
SCO ID#: 22-24471-02A
EADDY BUILDING DETACHED ADDITION
4300 REEDY CREEK RD., RALEIGH, NC 27607

No.	Date

SECTIONS

DATE
09-06-24

S301