

New Security Entrances for  
**Lee County High School**

Lee County Schools  
NCDSP Unit 530 - School 336

1708 Nash Street, Sanford, NC 27330

DRAWING INDEX

Drawing No.	School
COVER	
BCS-100	Building Code Summary
A-100	Security Entrance Plan
A-101	Overall Campus Plan - Power / Data Connections
A-102	Security Entrance Plan
A-103	Security Entrance Plan
A-104	Security Entrance Plan
A-105	Security Entrance Plan
A-106	Sections and Details

**Hite associates**  
ARCHITECTURE / PLANNING / TECHNOLOGY  
2600 Meridian Drive / Greenville, N.C. 27834 / tel 252-757-0333

DRAWING SYMBOLS/  
ABBREVIATIONS

DRAWING IDENTIFICATION MARKERS

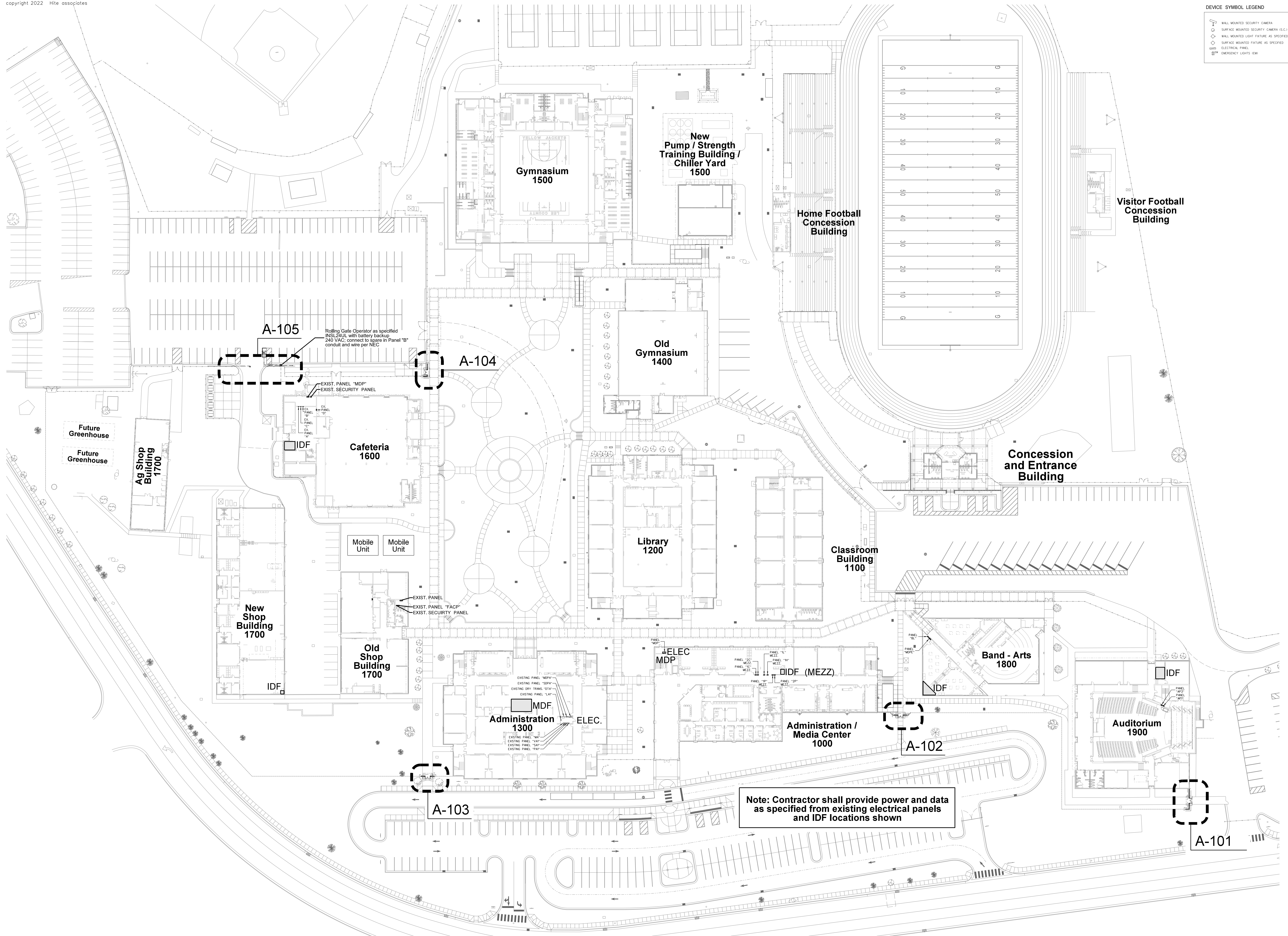
101.1  
DRAWING NUMBER  
SHEET NUMBER

101.2  
SECTION MARKER

101.2  
ELEVATION MARKER

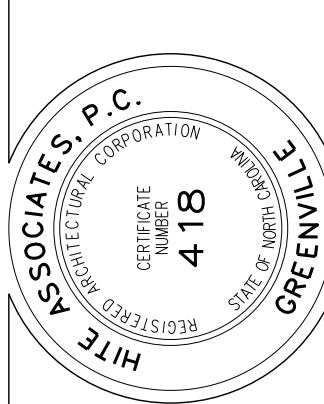


DEVICE SYMBOL LEGEND	
	WALL MOUNTED SECURITY CAMERA
	SURFACE MOUNTED SECURITY CAMERA (S.C.)
	WALL MOUNTED LIGHT FIXTURE AS SPECIFIED
	SURFACE MOUNTED LIGHT FIXTURE AS SPECIFIED
	ELECTRICAL PANEL
	EMERGENCY LIGHTS (EM)



No.	Date	Revision

**Hite associates**  
 ARCHITECTURE / PLANNING / TECHNOLOGY  
 2600 Meridian Drive / Greenville, NC 27834 / Tel: (252) 757-0333



New Security Entrances for  
**Lee County High School**  
 Lee County Schools  
 1708 Nash Street, Sanford, NC 27330

Project No. 22239  
 Date: 13 March 2023

Drawing No. **A 100**

**100.1 OVERALL CAMPUS PLAN - POWER / DATA CONNECTIONS**

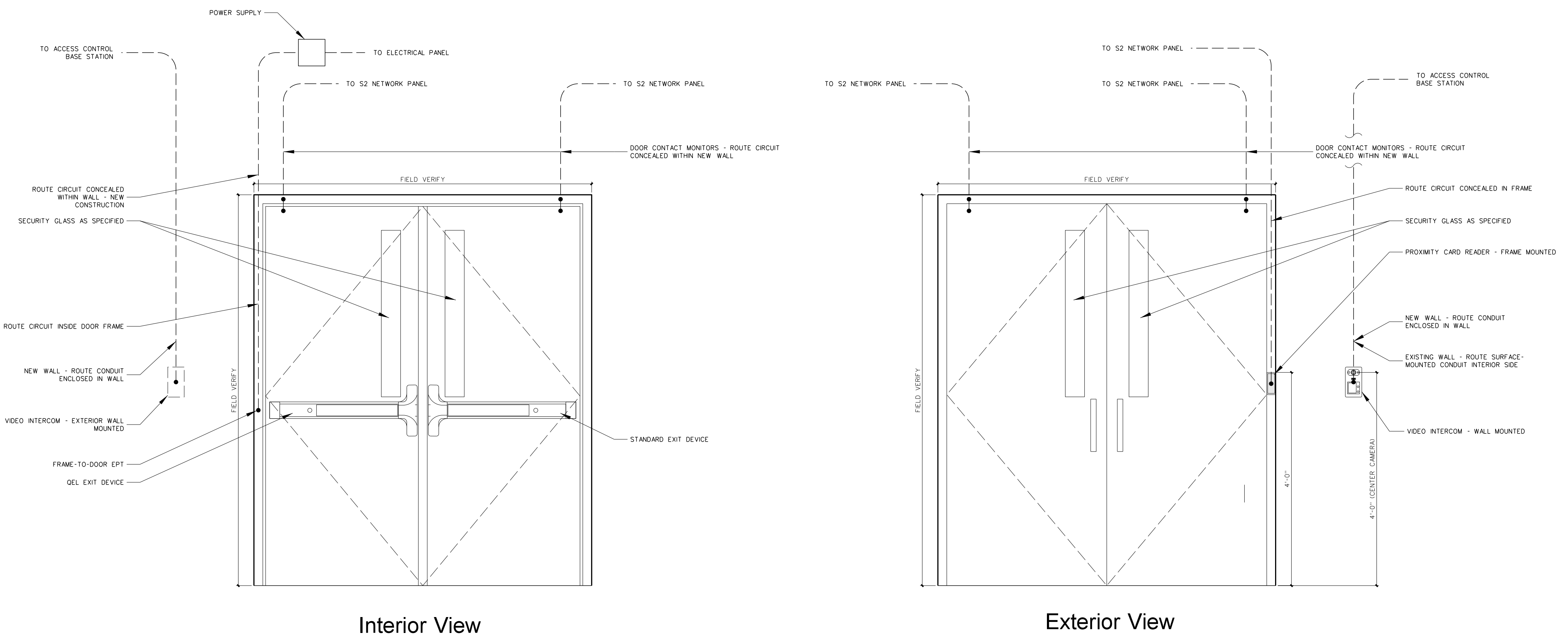
SCALE: 1" = 40'-0"

**PLAN KEY NOTE / ACCESS CONTROL NOTES / GENERAL NOTES**  
(Apply Throughout)

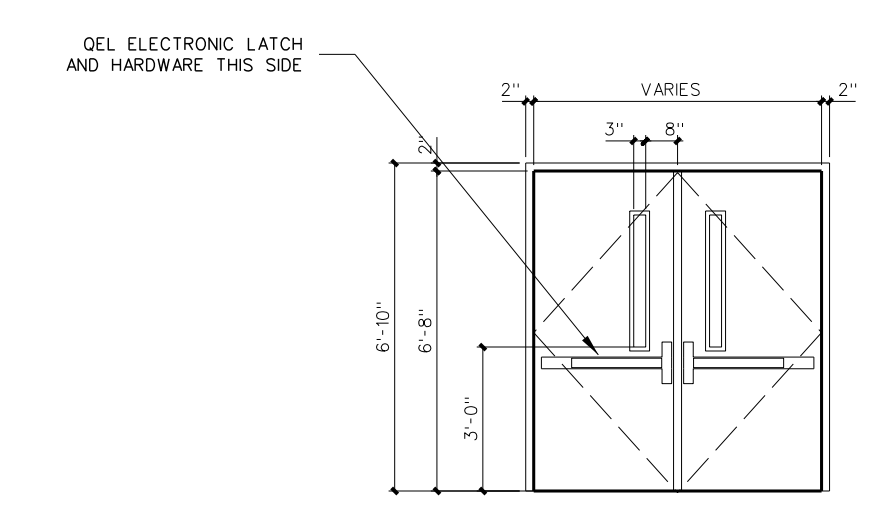
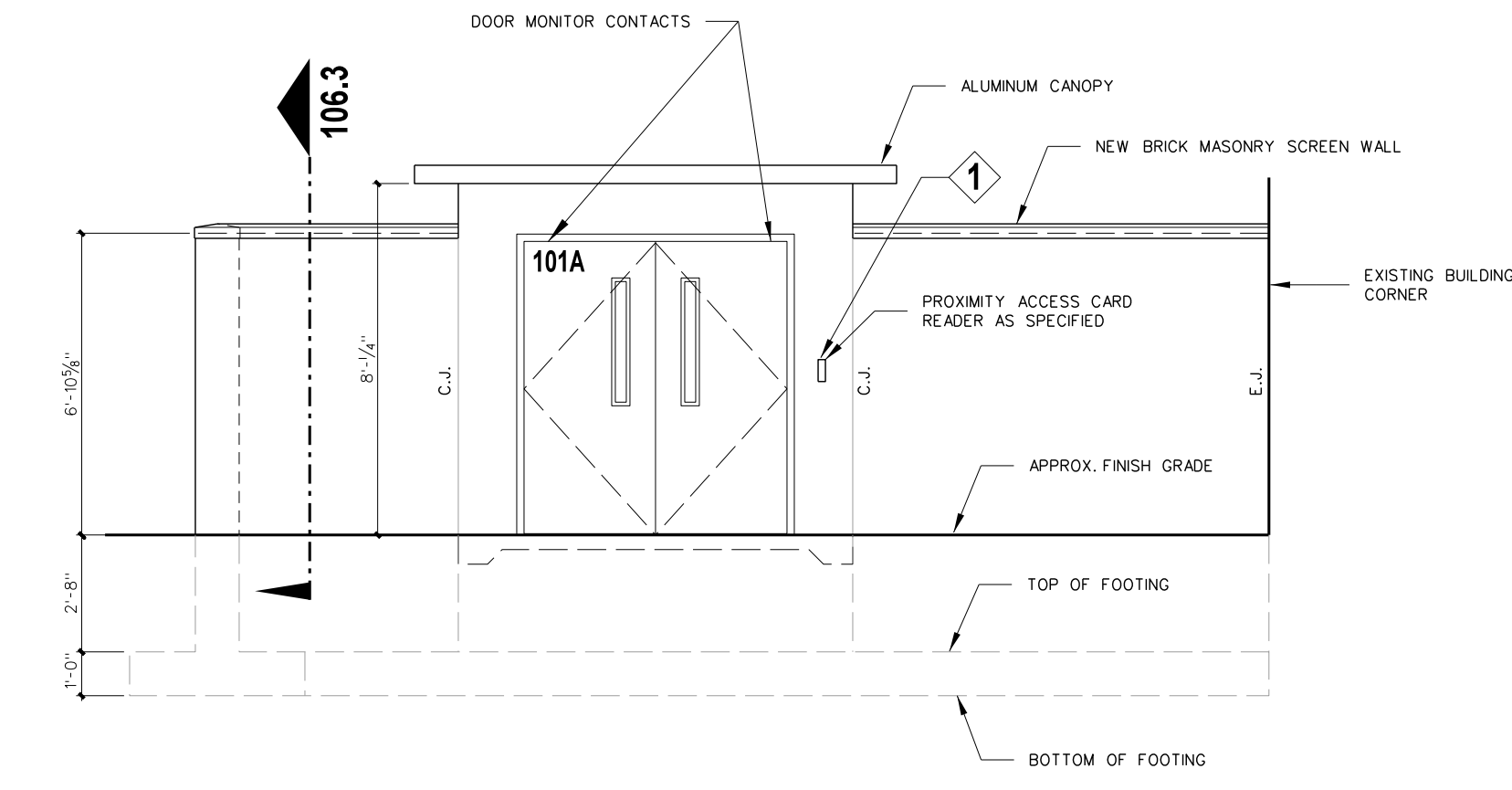
1. INSTALL SURFACE MOUNTED PROXIMITY CARD READER UNIT AS SHOWN 48" AFF TO TOP OF UNIT.
2. GENERAL NOTE: PROVIDE DOOR CONTACTS ON ALL ACCESS CONTROLLED DOORS.
3. GENERAL NOTE: ALL ACCESS CONTROL NETWORK NODES TO BE PROVIDED IN THE SCHOOL IDF AND MDF ROOMS FINAL LOCATIONS AS DIRECTED BY OWNER.
4. GENERAL NOTE: PROVIDE ALL POWER SUPPLIES CONDUIT AND WIRING AS REQUIRED FOR ALL ELECTRIFIED DOOR LOCKING HARDWARE OBTAIN POWER FROM ADJACENT BUILDING CIRCUIT.
5. GENERAL NOTE: ALL HARDWARE AND DEVICE INSTALLATIONS SHALL INTERFACE WITH EXISTING DOOR ACCESS CONTROL STATIONS.

**HARDWARE / EQUIPMENT LEGEND** (All hardware / equipment specifications shall comply with Lee County School standards, and be compatible with new or existing S2 Security Access control Systems)

1. CARD READER UNIT: HID ICCLASS CARD READER, MODEL S2-900PTNKE00460-S2SEC, MINI-MULLION VERSION WHERE REQUIRED PROVIDED BY THE DIV 17 ACCESS CONTROL CONTRACTOR.
2. ACCESS CONTROL SYSTEM FIELD PANEL: S2 NETWORK NODE S2-NN-E2R-WM, HOUSING UP TO SEVEN (7) S2 APPLICATION BLADES SUPPORTING UP TO 14 DOORS WITH NETWORK DROP - PROVIDED BY THE DIVISION 17 ACCESS CONTROL CONTRACTOR-ELECTRICAL CONTRACTOR TO PROVIDE ELECTRICAL POWER.
3. ACCESS CONTROL BASE STATION COMPUTER SOFTWARE PROGRAM INSTALLED ON OWNER'S PC FOR SOFTWARE CONTROL OF CONNECTED DOORS - PROVIDED BY THE DIVISION 17 ACCESS CONTROL CONTRACTOR.
4. DOOR CONTACTS FOR EXISTING DOOR FRAME: SURFACE MOUNT SWITCH SETS, GR1440 SERIES, 4453A MINIATURE ALUMINUM GEORGE RISK INDUSTRIES - PROVIDED BY THE DIVISION 17 ACCESS CONTROL CONTRACTOR-ELECTRICAL CONTRACTOR TO PROVIDE RACEWAY TO DOOR FRAME.
5. POWER SUPPLIES: FOR ALL POWERED LOCKING HARDWARE / EXIT DEVICES PROVIDED AND INSTALLED BY DIV 8 DOOR HARDWARE SUPPLIER.
6. VON DUPRIN QUIET ELECTRIC LATCH RETRACTION: OEL EXIT DEVICE 9999 SERIES PROVIDED AND INSTALLED BY DIV 8 DOOR HARDWARE SUPPLIER.
7. EPT ELECTRIC POWER TRANSFER (FRAME TO DOOR WIRING PATH): VON DUPRIN MODELS EPT 2, EPT 10, EPT10C (AS APPLICATION REQUIRES) FOR USE WITH VON DUPRIN OEL EXIT DEVICES PROVIDED AND INSTALLED BY DIV 8 DOOR HARDWARE SUPPLIER.
8. WORK OF ALL DIVISIONS SPECIFICATIONS BY GENERAL CONTRACTOR INCLUDING COORDINATION OF WORK BY DIVISION 16 AND 17 SUBCONTRACTORS WORK IS TO BE COMPLETE IN ALL RESPECTS, INCLUDING POWER AND CONNECTIONS FOR BOTH NEW AND RELOCATED ITEMS AS SHOWN.
9. GENERAL NOTE: PATCH AND RESTORE ALL DISTURBED FINISHES TO MATCH ADJACENT SURFACES, I.E INCLUDING BU NOT LIMITED TO FLOORING, PAINT, WALLS, CEILING, ETC.

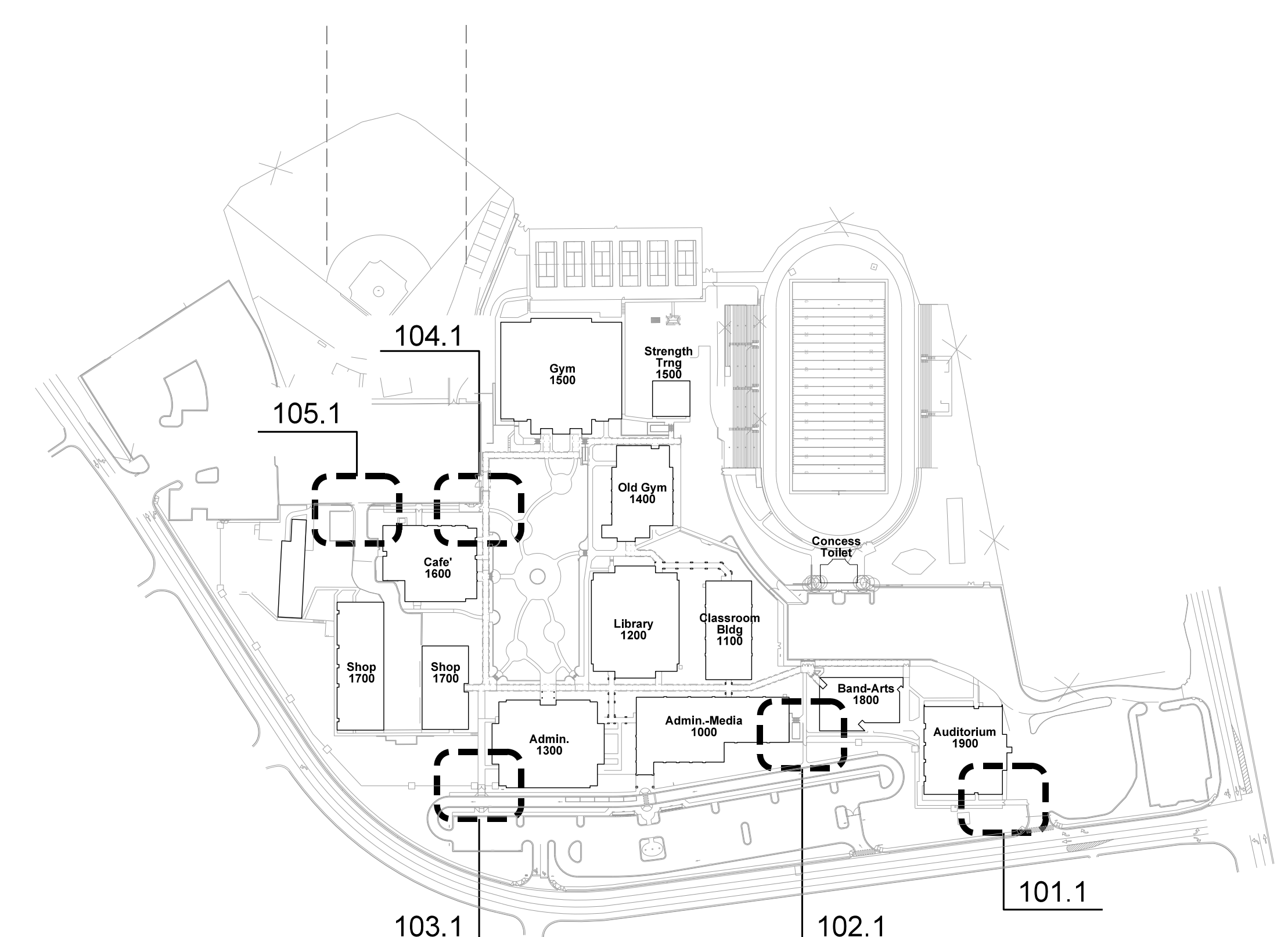
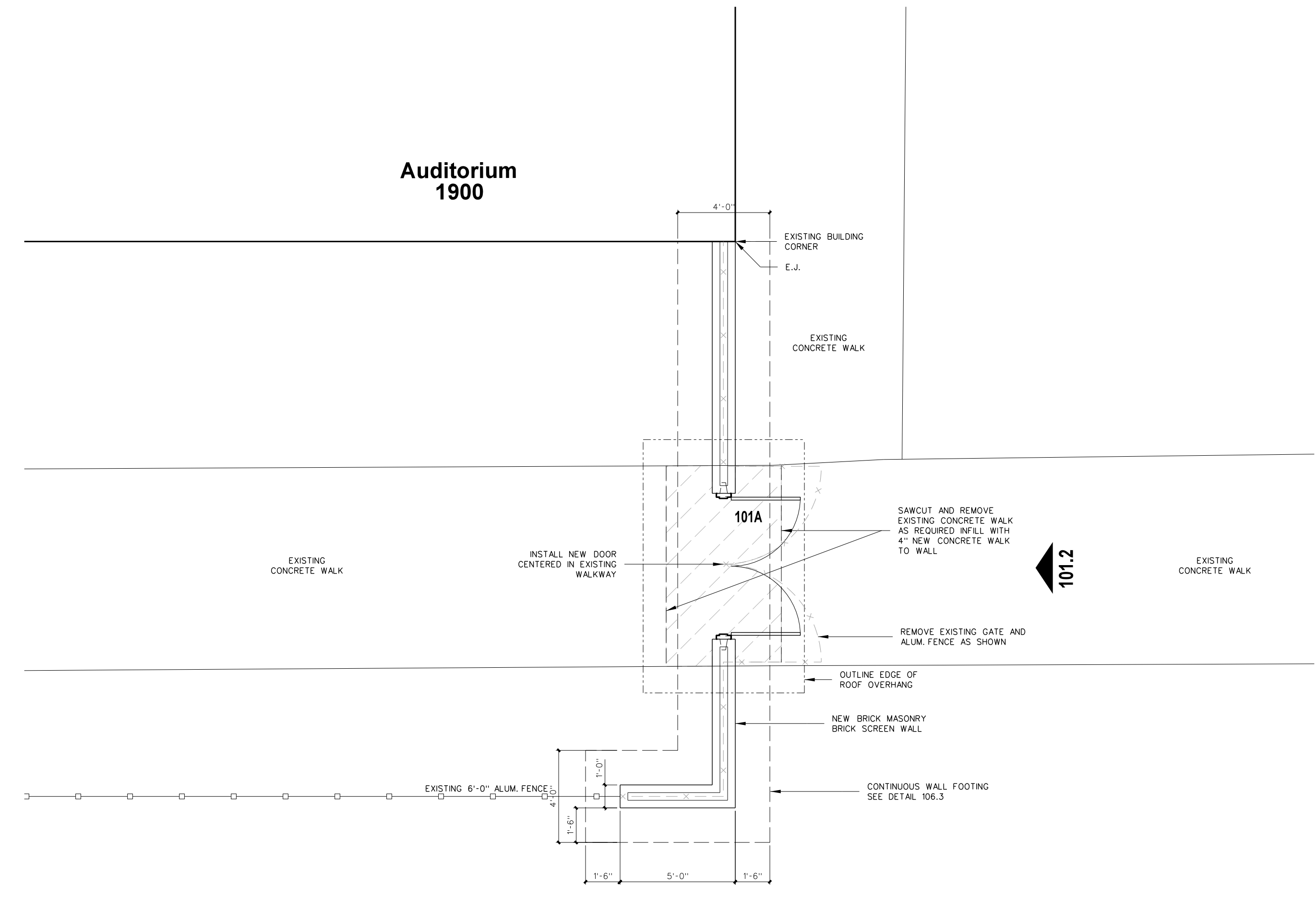


**101.4 SECURITY ELETRICAL ACCESS DETAILS**  
SCALE: 3/4" = 1'-0"



**101.3 DOOR ELEVATION**  
SCALE: 1/4" = 1'-0"

- SECURE EXIT DOOR NOTES:**
1. ALL DOORS TO BE 1.75" THK x 35" W x 80" HT
  2. ALL FRAMES SHALL BE 6" WIDE ALUMINUM AND RECEIVE HINGES AS SPECIFIED.
  3. ALL DOORS TO BE INSTALLED WITH EXIT DEVICES AND CLOSERS WITH BACKSTOP, AT PAIRS OF DOORS - PROVIDE TYPE OEL EXIST DEVICES FOR ELECTRIFIED LEAF, PROVIDE PULL OR LEVER RIGHT SIDE ONLY AND KEYED MULLIONS
  4. PROVIDE CYLINDERS FOR KEYED MULLIONS SUPPLIED BY ALUMINUM DOOR SUBCONTRACTOR
  5. ALL DOOR OPENINGS TO RECEIVE S2 ELECTRONICS WITH THROUGH-HINGE DELIVERY TO EXIT DEVICES, RIGHT SIDE ONLY AT PAIRS, ROUGH INS, CONDUITS, AND S2 COMPONENTS AND WIRING BY OWNER VENDOR, COORDINATION BY GC.



No.	Date	Revision

**Hite associates**  
ARCHITECTURE / PLANNING / TECHNOLOGY  
2600 Meridian Drive / Greenville, NC 27834 / Tel: (252) 757-0333

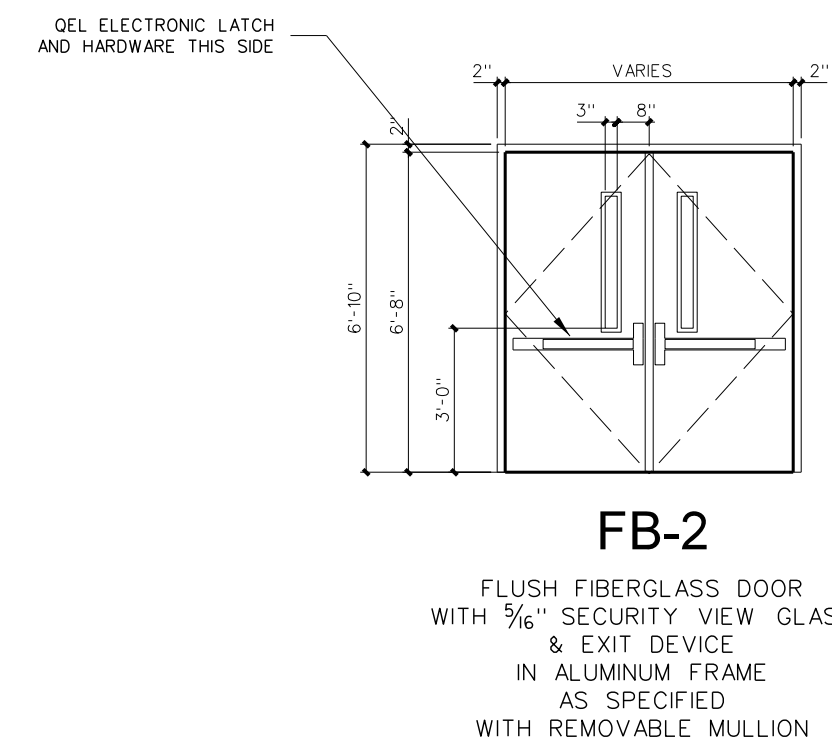


New Security Entrances for  
**Lee County High School**  
Lee County Schools  
1708 Nash Street, Sanford, NC 27330

Project No.	22239
Date:	13 March 2023
Drawing no.	<b>A</b> <b>101</b>

**PLAN KEY NOTE / ACCESS CONTROL NOTES / GENERAL NOTES**  
(Apply Throughout)

- 1. INSTALL SURFACE MOUNTED PROXIMITY CARD READER UNIT AS SHOWN 48" AFF TO TOP OF UNIT.
- 2. GENERAL NOTE: PROVIDE DOOR CONTACTS ON ALL ACCESS CONTROLLED DOORS.
- 3. GENERAL NOTE: ALL ACCESS CONTROL NETWORK NODES TO BE PROVIDED IN THE SCHOOL IDF AND IDF ROOMS FINAL LOCATIONS AS DIRECTED BY OWNER.
- 4. GENERAL NOTE: PROVIDE ALL POWER SUPPLIES, CONDUIT AND WIRING AS REQUIRED FOR ALL ELECTRIFIED DOOR LOCKING HARDWARE. OBTAIN POWER FROM ADJACENT BUILDING CIRCUIT.
- 5. GENERAL NOTE: ALL HARDWARE AND DEVICE INSTALLATIONS SHALL INTERFACE WITH EXISTING DOOR ACCESS CONTROL STATIONS.



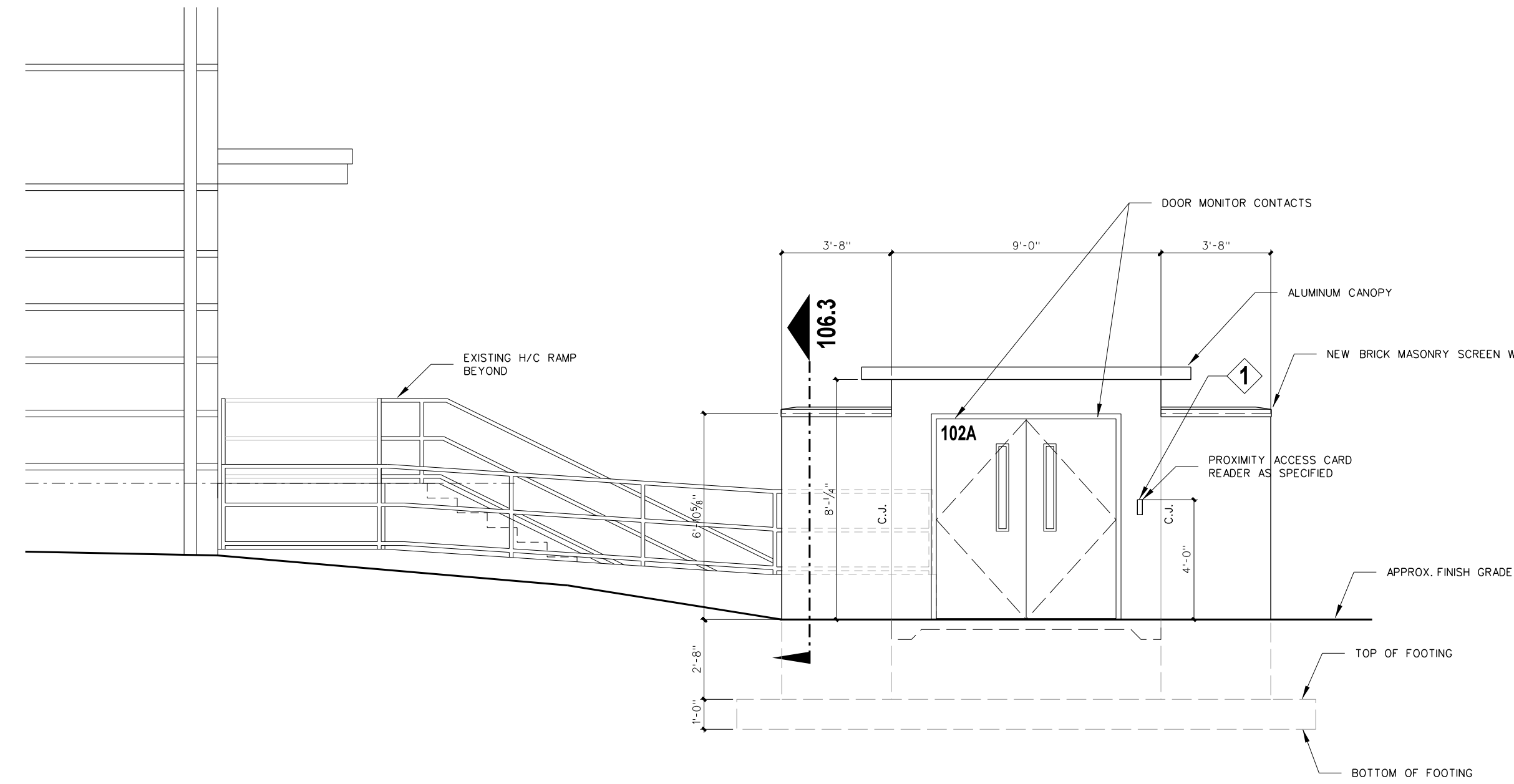
**HARDWARE / EQUIPMENT LEGEND** (All hardware / equipment specifications shall comply with Lee County School standards, and be compatible with new or existing S2 Security Access control Systems)

- CARD READER UNIT: HID iCLASS CARD READER MODEL S2-902P/NNEK0460-S2SEC, MINI-MULLION VERSION WHERE REQUIRED PROVIDED BY THE DIV. 17 ACCESS CONTROL CONTRACTOR.
- ACCESS CONTROL SYSTEM FIELD PANEL: S2 NETWORK NODE S2-NNE2R-VM HOUSING UP TO SEVEN (7) S2 APPLICATION BLADES, SUPPORTING UP TO 14 DOORS WITH NETWORK DROP - PROVIDED BY THE DIVISION 17 ACCESS CONTROL CONTRACTOR ELECTRICAL CONTRACTOR TO PROVIDE ELECTRICAL POWER.
- ACCESS CONTROL BASE STATION: COMPUTER SOFTWARE PROGRAM, INSTALLED ON OWNER'S PC FOR SOFTWARE CONTROL OF CONNECTED DOORS - PROVIDED BY THE DIVISION 17 ACCESS CONTROL CONTRACTOR.
- DOOR CONTACTS FOR EXISTING DOOR/FRAME: SURFACE MOUNT SWITCH SETS, GRI 4460 SERIES, 4463A MINATURE ALUMINUM GEORGE RISK INDUSTRIES - PROVIDED BY THE DIVISION 17 ACCESS CONTROL CONTRACTOR ELECTRICAL CONTRACTOR TO PROVIDE RACEWAY TO DOOR FRAME.
- POWER SUPPLIES: FOR ALL POWERED LOCKING HARDWARE / EXIT DEVICES PROVIDED AND INSTALLED BY DIV 8 DOOR HARDWARE SUPPLIER.
- VON DUPRIN QUIET ELECTRIC LATCH RETRACTION: GEL EXIT DEVICE 9899 SERIES, PROVIDED AND INSTALLED BY DIV 8 DOOR HARDWARE SUPPLIER.
- EPT ELECTRIC POWER TRANSFER (FRAME TO DOOR WIRING PATH): VON DUPRIN MODELS EPT 2 EPT 10, EPT10C (AS APPLICATION REQUIRES), FOR USE WITH VON DUPRIN GEL EXIT DEVICES, PROVIDED AND INSTALLED BY DIV 8 DOOR HARDWARE SUPPLIER.
- WORK OF ALL DIVISIONS SPECIFICATIONS BY GENERAL CONTRACTOR INCLUDING COORDINATION OF WORK BY DIVISION 10 AND 17 SUBCONTRACTORS WORK IS TO BE COMPLETE IN ALL RESPECTS, INCLUDING POWER AND CONNECTIONS FOR BOTH NEW AND RELOCATED ITEMS AS SHOWN.
- GENERAL NOTE: PATCH AND RESTORE ALL DISTURBED FINISHES TO MATCH ADJACENT SURFACES, I.E. INCLUDING BUT NOT LIMITED TO, FLOORING, PAINT, WALLS, CEILINGS, ETC.

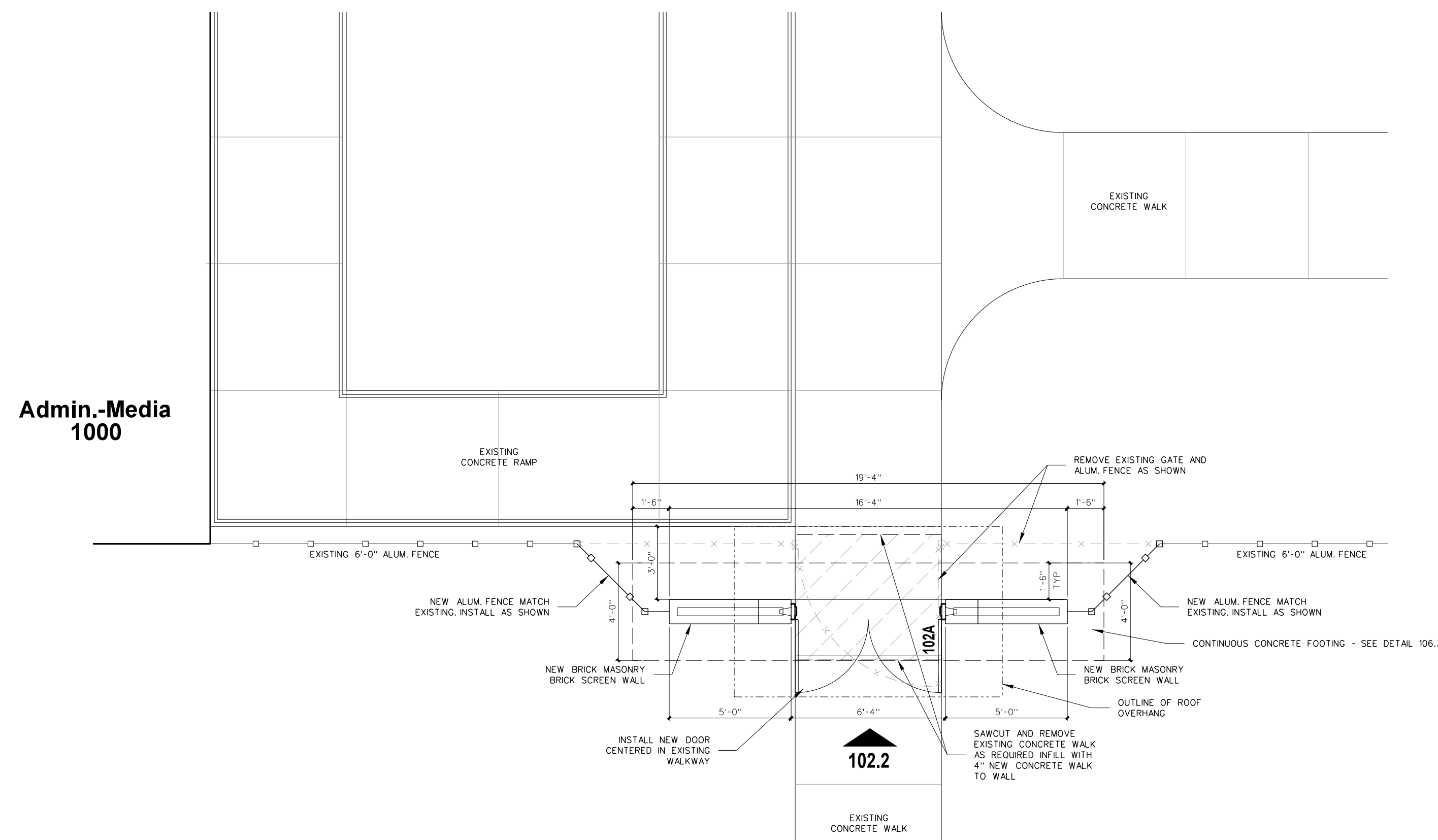
**101.3 DOOR ELEVATION**  
SCALE: 1/4" = 1'-0"

**SECURE EXIT DOOR NOTES:**

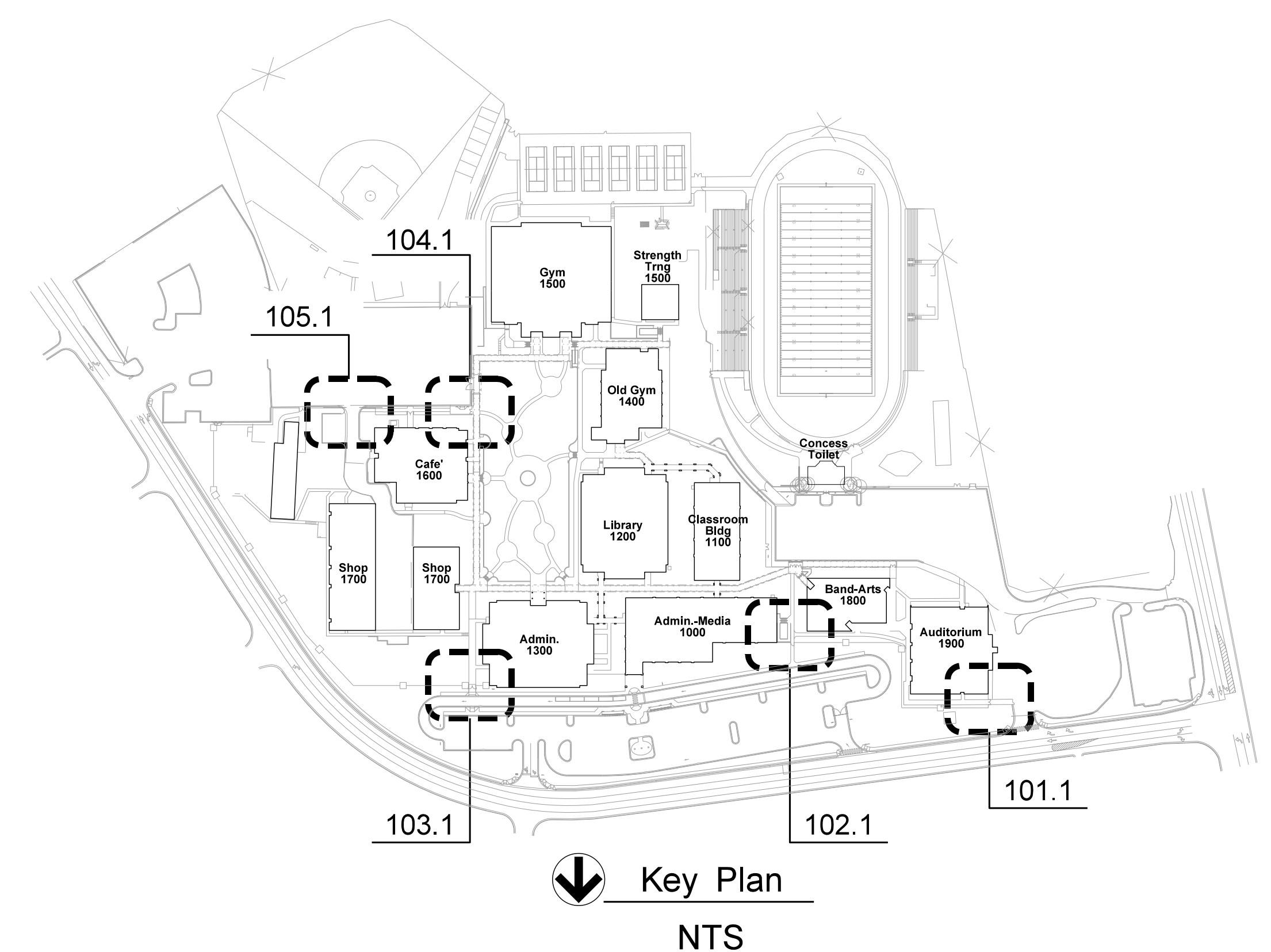
- ALL DOORS TO BE 1.75" THK x 36" W x 80" HT
- ALL FRAMES SHALL BE 4.5" WIDE ALUMINUM AND RECEIVE HINGES AS SPECIFIED.
- ALL DOORS TO BE INSTALLED WITH EXIT DEVICE AND CLOSURE WITH BACKSTOP AT PAIRS OF DOORS. FULL SIDE, PROVIDE PULL OR LEVER RIGHT SIDE ONLY AND KEYED MULLIONS
- PROVIDE CYLINDERS FOR KEYED MULLIONS SUPPLIED BY ALUMINUM DOOR
- ALL DOOR OPENINGS TO RECEIVE S2 ELECTRONICS WITH THROUGH-HINGE DELIVERY TO EXIT DEVICES, RIGHT SIDE ONLY AT PAIRS. ROUGH INS, CONDUITS, AND S2 COMPONENTS AND WIRING BY OWNER VENDOR, COORDINATION BY GC.



**102.2 SECURITY SCREEN WALL - NORTH ELEVATION**  
SCALE: 1/4" = 1'-0"

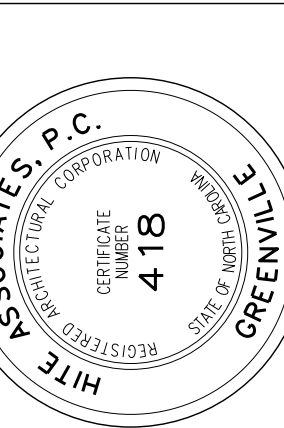


**102.1 SECURITY SCREEN WALL PLAN**  
SCALE: 1/4" = 1'-0"



No.	Date	Revision

**Hite associates**  
ARCHITECTURE / PLANNING / TECHNOLOGY  
2600 Meridian Drive / Greenville, NC 27834 / Tel: (252) 757-0333

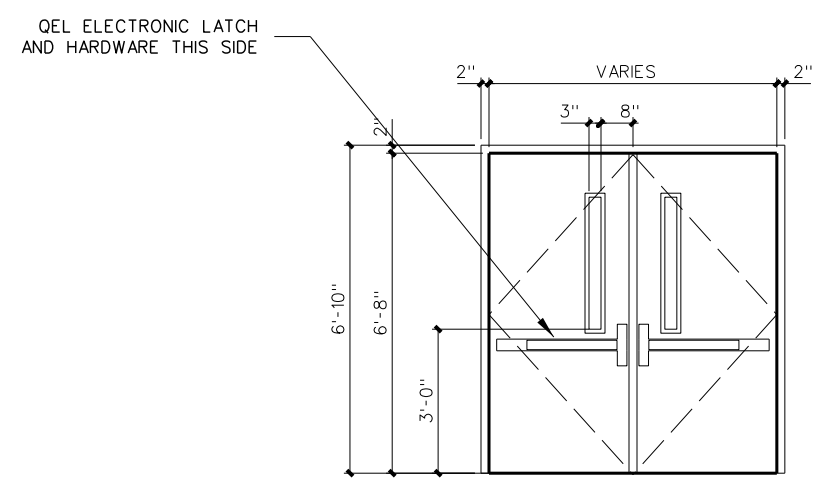


New Security Entrances for  
**Lee County High School**  
Lee County Schools  
1708 Nash Street, Sanford, NC 27330

Project No.	22239
Date:	13 March 2023
Drawing no.	<b>A</b> <b>102</b>

**PLAN KEY NOTE / ACCESS CONTROL NOTES / GENERAL NOTES**  
(Apply Throughout)

- 1. INSTALL SURFACE MOUNTED PROXIMITY CARD READER UNIT AS SHOWN 48" AFF TO TOP OF UNIT.
- 2. GENERAL NOTE: PROVIDE DOOR CONTACTS ON ALL ACCESS CONTROLLED DOORS.
- 3. GENERAL NOTE: ALL ACCESS CONTROL NETWORK NODES TO BE PROVIDED IN THE SCHOOL IDF AND MDF ROOMS. FINAL LOCATIONS AS DIRECTED BY OWNER.
- 4. GENERAL NOTE: PROVIDE ALL POWER SUPPLIES, CONDUIT AND WIRING AS REQUIRED FOR ALL ELECTRIFIED DOOR LOCKING HARDWARE. OBTAIN POWER FROM ADJACENT BUILDING CIRCUIT.
- 5. GENERAL NOTE: ALL HARDWARE AND DEVICE INSTALLATIONS SHALL INTERFACE WITH EXISTING DOOR ACCESS CONTROL STATIONS.



**FB-2**  
FLUSH FIBERGLASS DOOR  
WITH 1/8" SECURITY VIEW GLASS  
& EXIT DEVICE  
IN ALUMINUM FRAME  
AS SPECIFIED  
WITH REMOVABLE MULLION

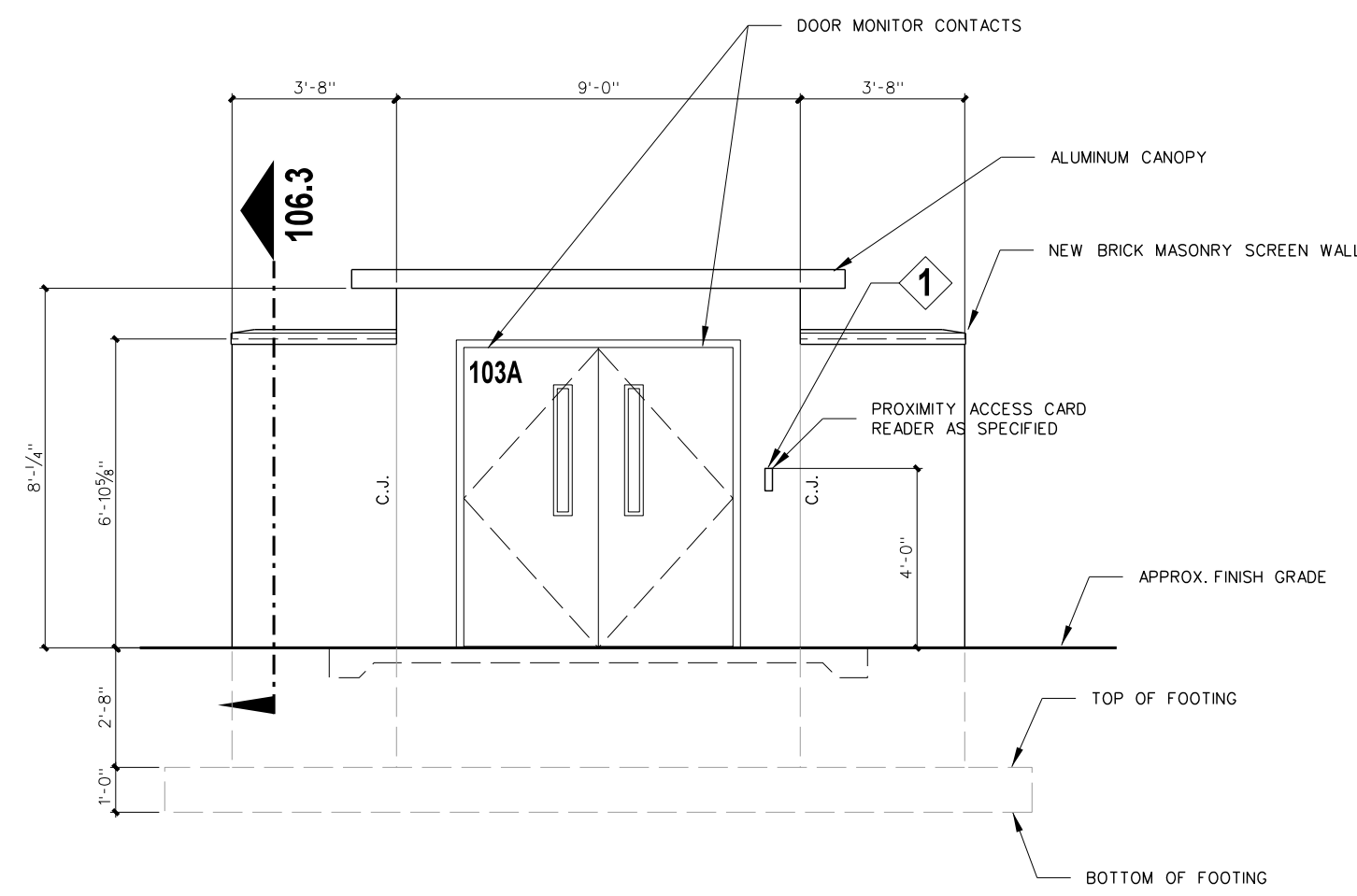
**101.3 DOOR ELEVATION**  
SCALE: 1/4" = 1'-0"

**SECURE EXIT DOOR NOTES:**

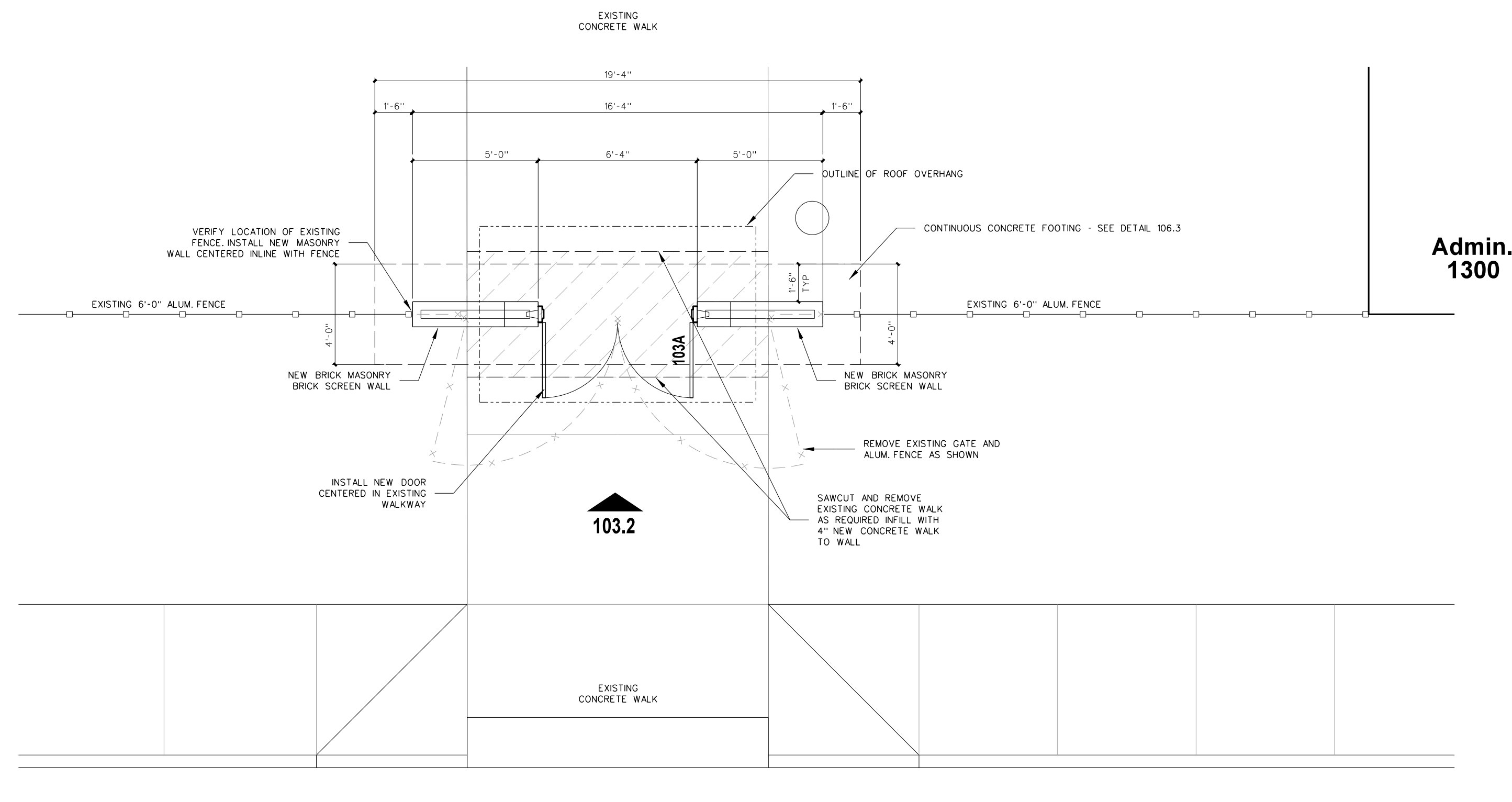
- 1. ALL DOORS TO BE 1.75" THK x 36" W x 80" HT
- 2. ALL FRAMES SHALL BE 4.5" WIDE ALUMINUM AND RECEIVE HINGES AS SPECIFIED.
- 3. ALL DOORS TO BE INSTALLED WITH EXIT DEVICE AND CLOSURE WITH BACKSTOP AT PAIRS OF DOORS. PULL SIDE PROVIDE PULL OR LEVER RIGHT SIDE ONLY AND KEYED MULLIONS.
- 4. PROVIDE CYLINDERS FOR KEYED MULLIONS SUPPLIED BY ALUMINUM DOOR
- 5. ALL DOOR OPENINGS TO RECEIVE S2 ELECTRONICS WITH THROUGH-HINGE DELIVERY TO EXIT DEVICES, RIGHT SIDE ONLY AT PAIRS, ROUGH INS, CONDUITS, AND S2 COMPONENTS AND WIRING BY OWNER VENDOR, COORDINATION BY GC.

**HARDWARE / EQUIPMENT LEGEND** (All hardware / equipment specifications shall comply with Lee County School standards, and be compatible with new or existing S2 Security Access control Systems)

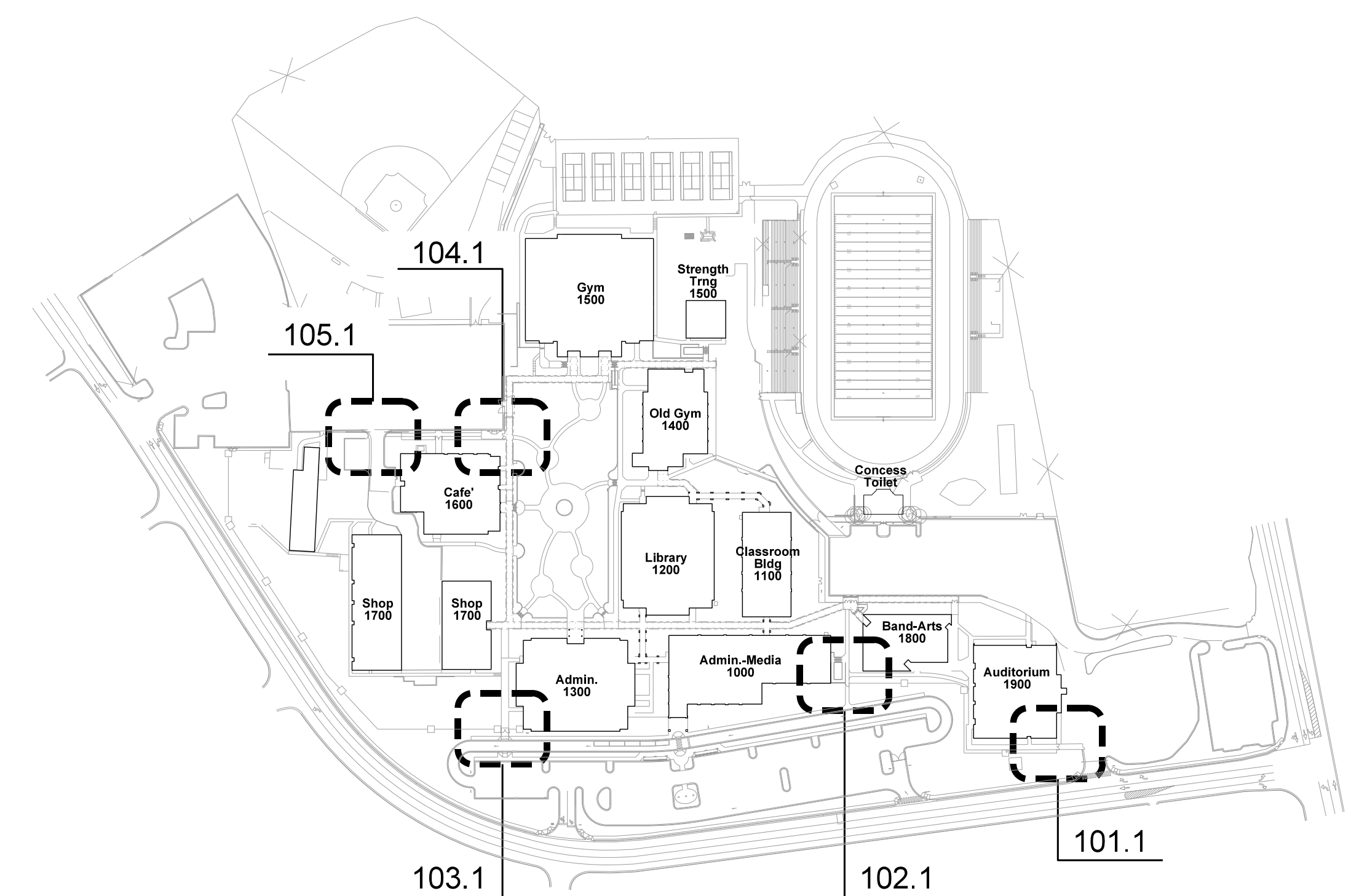
- 1. CARD READER UNIT: HID ICCLASS CARD READER MODEL S2-400PTNEXK0460-S2SEC-MINI-MULLION VERSION WHERE REQUIRED PROVIDED BY THE DIV 17 ACCESS CONTROL CONTRACTOR.
- 2. ACCESS CONTROL SYSTEM FIELD PANEL: S2 NETWORK NODE, S2-NN-E2R-WM, HOUSING UP TO SEVEN (7) S2 APPLICATION BLADES SUPPORTING UP TO 14 DOORS WITH NETWORK DROP - PROVIDED BY THE DIVISION 17 ACCESS CONTROL CONTRACTOR ELECTRICAL CONTRACTOR TO PROVIDE ELECTRICAL POWER.
- 3. ACCESS CONTROL BASE STATION: COMPUTER SOFTWARE PROGRAM, INSTALLED ON OWNER'S PC FOR SOFTWARE CONTROL OF CONNECTED DOORS - PROVIDED BY THE DIVISION 17 ACCESS CONTROL CONTRACTOR.
- 4. DOOR CONTACTS FOR EXISTING DOOR/FRAME: SURFACE MOUNT SWITCH SETS, GRI 4400 SERIES, 4483A, MINATURE ALUMINUM GEORGE RISK INDUSTRIES - PROVIDED BY THE DIVISION 17 ACCESS CONTROL CONTRACTOR ELECTRICAL CONTRACTOR TO PROVIDE RACEWAY TO DOOR FRAME.
- 5. POWER SUPPLIES FOR ALL POWERED LOCKING HARDWARE / EXIT DEVICES PROVIDED AND INSTALLED BY DIV 8 DOOR HARDWARE SUPPLIER.
- 6. VON DUPRIN QUIET ELECTRIC LATCH RETRACTION: OEL EXIT DEVICE 9899 SERIES PROVIDED AND INSTALLED BY DIV 8 DOOR HARDWARE SUPPLIER.
- 7. EPT ELECTRIC POWER TRANSFER (FRAME TO DOOR WIRING PATH): VON DUPRIN MODELS EPT 2 EPT 10, EPT10C (AS APPLICATION REQUIRES), FOR USE WITH VON DUPRIN OEL EXIT DEVICES PROVIDED AND INSTALLED BY DIV 8 DOOR HARDWARE SUPPLIER.
- 8. WORK OF ALL DIVISIONS SPECIFICATIONS BY GENERAL CONTRACTOR INCLUDING COORDINATION OF WORK BY DIVISION 16 AND 17 SUBCONTRACTORS WORK IS TO BE COMPLETE IN ALL RESPECTS, INCLUDING POWER AND CONNECTIONS FOR BOTH NEW AND RELOCATED ITEMS AS SHOWN.
- 9. GENERAL NOTE: PATCH AND RESTORE ALL DISTURBED FINISHES TO ADJACENT SURFACES: I.E. INCLUDING BU NOT LIMITEDS TO, FLOORING, PAINT, WALLS, CEILING, ETC.



**103.2 SECURITY SCREEN WALL - NORTH ELEVATION**  
SCALE: 1/4" = 1'-0"



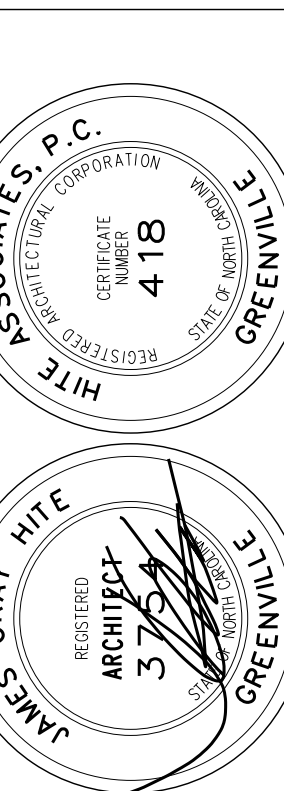
**103.1 SECURITY SCREEN WALL PLAN**  
SCALE: 1/4" = 1'-0"



Key Plan  
NTS

No.	Date	Revision

**Hite associates**  
ARCHITECTURE / PLANNING / TECHNOLOGY  
2600 Meridian Drive / Greenville, NC 27634 / Tel: (252) 757-0333

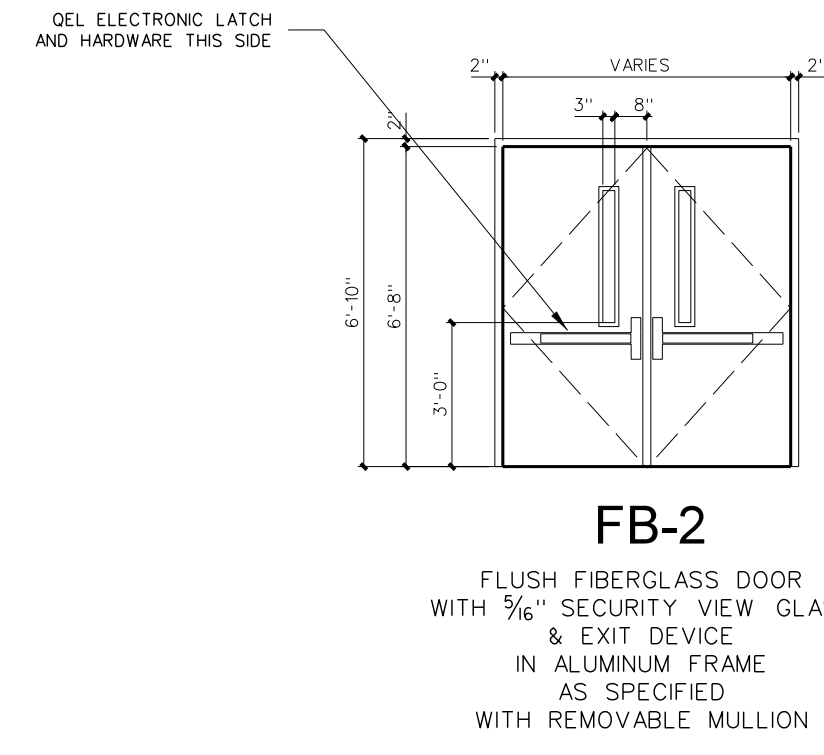


New Security Entrances for  
**Lee County High School**  
Lee County Schools  
1708 Nash Street, Sanford, NC 27330

Project No.	22239
Date:	13 March 2023
Drawing no.	<b>A</b> <b>103</b>

**PLAN KEY NOTE / ACCESS CONTROL NOTES / GENERAL NOTES**  
(Apply Throughout)

- 1 INSTALL SURFACE MOUNTED PROXIMITY CARD READER UNIT AS SHOWN 48" AFF TO TOP OF UNIT.
- 2 GENERAL NOTE: PROVIDE DOOR CONTACTS ON ALL ACCESS CONTROLLED DOORS.
- 3 GENERAL NOTE: ALL ACCESS CONTROL NETWORK NODES TO BE PROVIDED IN THE SCHOOL IDF AND MDF ROOMS FINAL LOCATIONS AS DIRECTED BY OWNER.
- 4 GENERAL NOTE: PROVIDE ALL POWER SUPPLIES, CONDUIT AND WIRING AS REQUIRED FOR ALL ELECTRIFIED DOOR LOCKING HARDWARE. OBTAIN POWER FROM ADJACENT BUILDING CIRCUIT.
- 5 GENERAL NOTE: ALL HARDWARE AND DEVICE INSTALLATIONS SHALL INTERFACE WITH EXISTING DOOR ACCESS CONTROL STATIONS.



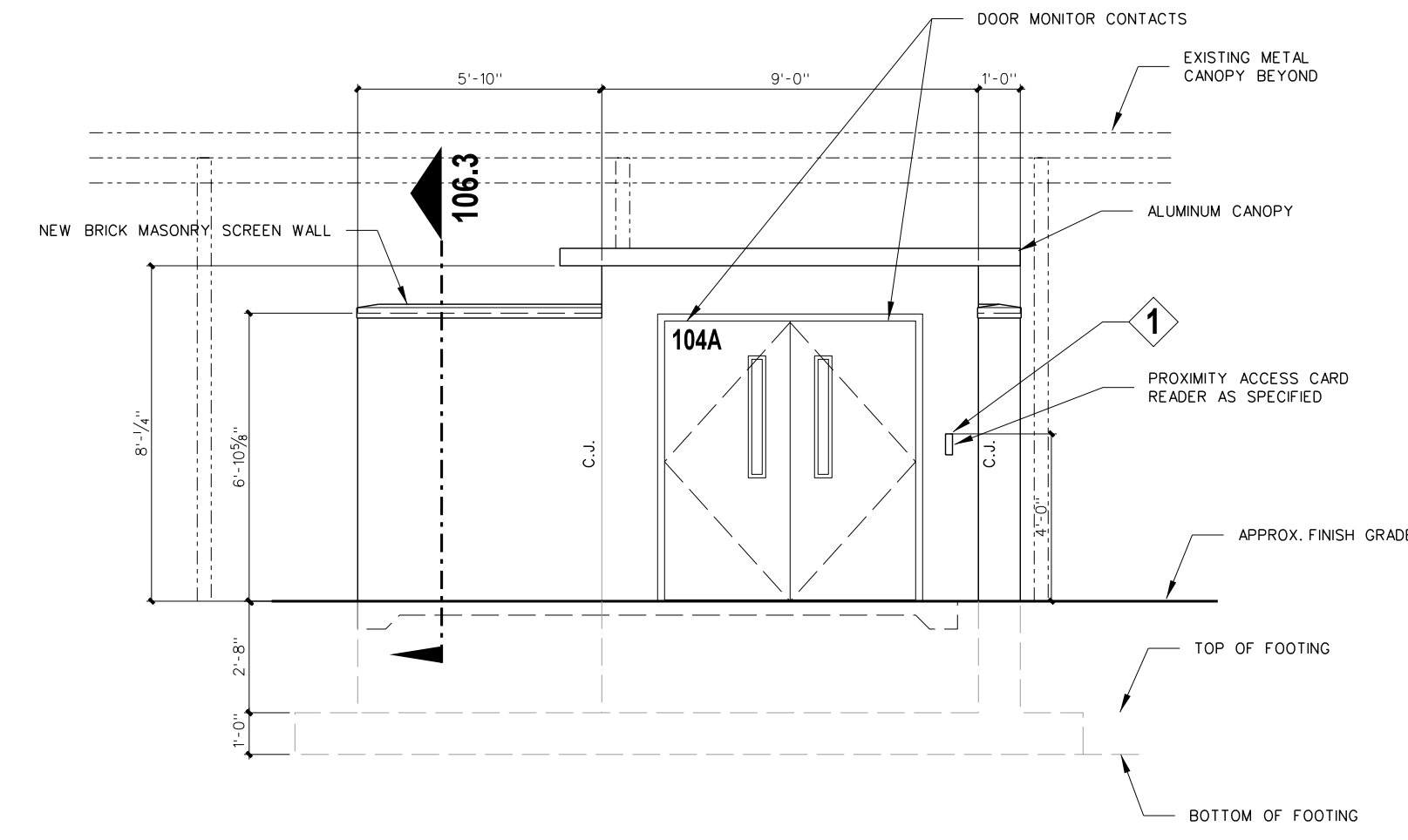
**HARDWARE / EQUIPMENT LEGEND** (All hardware / equipment specifications shall comply with Lee County School standards, and be compatible with new or existing S2 Security Access control Systems)

1. CARD READER UNIT: HID IC CARD READER MODEL S2-900PTNEX0040-S2SEC, MINI-MULLION VERSION WHERE REQUIRED, PROVIDED BY THE DIV 17 ACCESS CONTROL CONTRACTOR.
2. ACCESS CONTROL SYSTEM FIELD PANEL: S2 NETWORK NODE, S2-NNEZR-WM, HOUSING UP TO SEVEN (7) S2 APPLICATION BLADES SUPPORTING UP TO 14 DOORS WITH NETWORK DROP - PROVIDED BY THE DIVISION 17 ACCESS CONTROL CONTRACTOR, ELECTRICAL CONTRACTOR TO PROVIDE ELECTRICAL POWER.
3. ACCESS CONTROL BASE STATION COMPUTER SOFTWARE PROGRAM INSTALLED ON OWNER'S PC FOR SOFTWARE CONTROL OF CONNECTED DOORS - PROVIDED BY THE DIVISION 17 ACCESS CONTROL CONTRACTOR.
4. DOOR CONTACTS FOR EXISTING DOOR FRAME SURFACE MOUNT SWITCH SETS, OR 4460 SERIES, 483A MINATURE ALUMINUM GEORGE RISK INDUSTRIES - PROVIDED BY THE DIVISION 17 ACCESS CONTROL CONTRACTOR, ELECTRICAL CONTRACTOR TO PROVIDE RACEWAY TO DOOR FRAME.
5. POWER SUPPLIES FOR ALL POWERED LOCKING HARDWARE / EXIT DEVICES PROVIDED AND INSTALLED BY DIV 8 DOOR HARDWARE SUPPLIER.
6. VON DUPRIN QUIET ELECTRIC LATCH RETRACTION, QEL EXIT DEVICE 9899 SERIES, PROVIDED AND INSTALLED BY DIV 8 DOOR HARDWARE SUPPLIER.
7. EPT ELECTRIC POWER TRANSFER (FRAME TO DOOR WIRING PATH), VON DUPRIN MODELS EPT 2, EPT 10, EPT10C (AS APPLICATION REQUIRES) FOR USE WITH VON DUPRIN QEL EXIT DEVICES PROVIDED AND INSTALLED BY DIV 8 DOOR HARDWARE SUPPLIER.
8. WORK OF ALL DIVISIONS SPECIFICATIONS BY GENERAL CONTRACTOR INCLUDING COORDINATION OF WORK BY DIVISION 16 AND 17 SUBCONTRACTORS WORK IS TO BE COMPLETE IN ALL RESPECTS, INCLUDING POWER AND CONNECTIONS FOR BOTH NEW AND RELOCATED ITEMS AS SHOWN.
9. GENERAL NOTE: PATCH AND RESTORE ALL DISTURBED FINISHES TO MATCH ADJACENT SURFACES, I.E. INCLUDING BU NOT LIMITEDS TO FLOORING, PAINT, WALLS, CEILING, ETC.

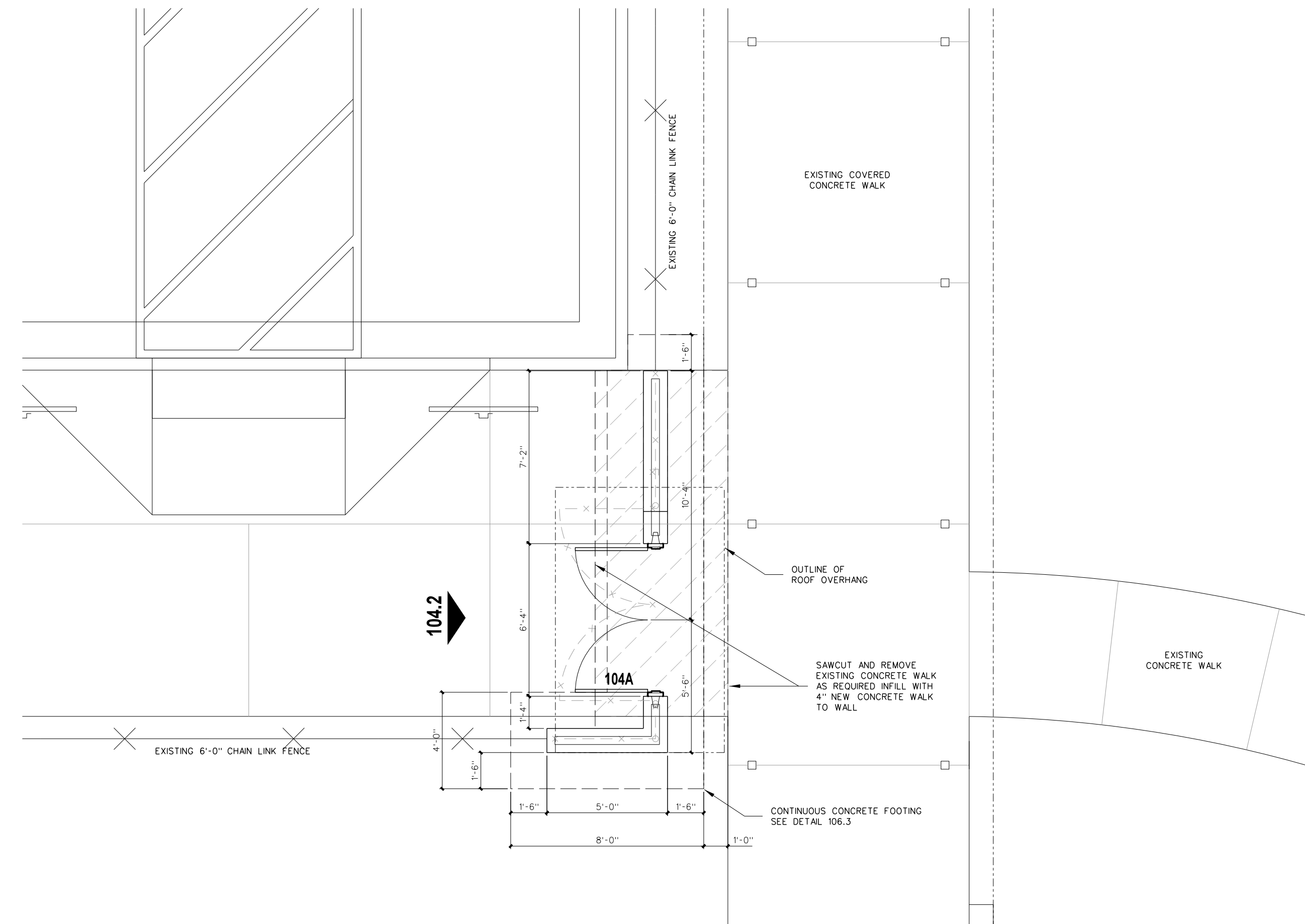
**101.3 DOOR ELEVATION**  
SCALE: 1/4" = 1'-0"

**SECURE EXIT DOOR NOTES:**

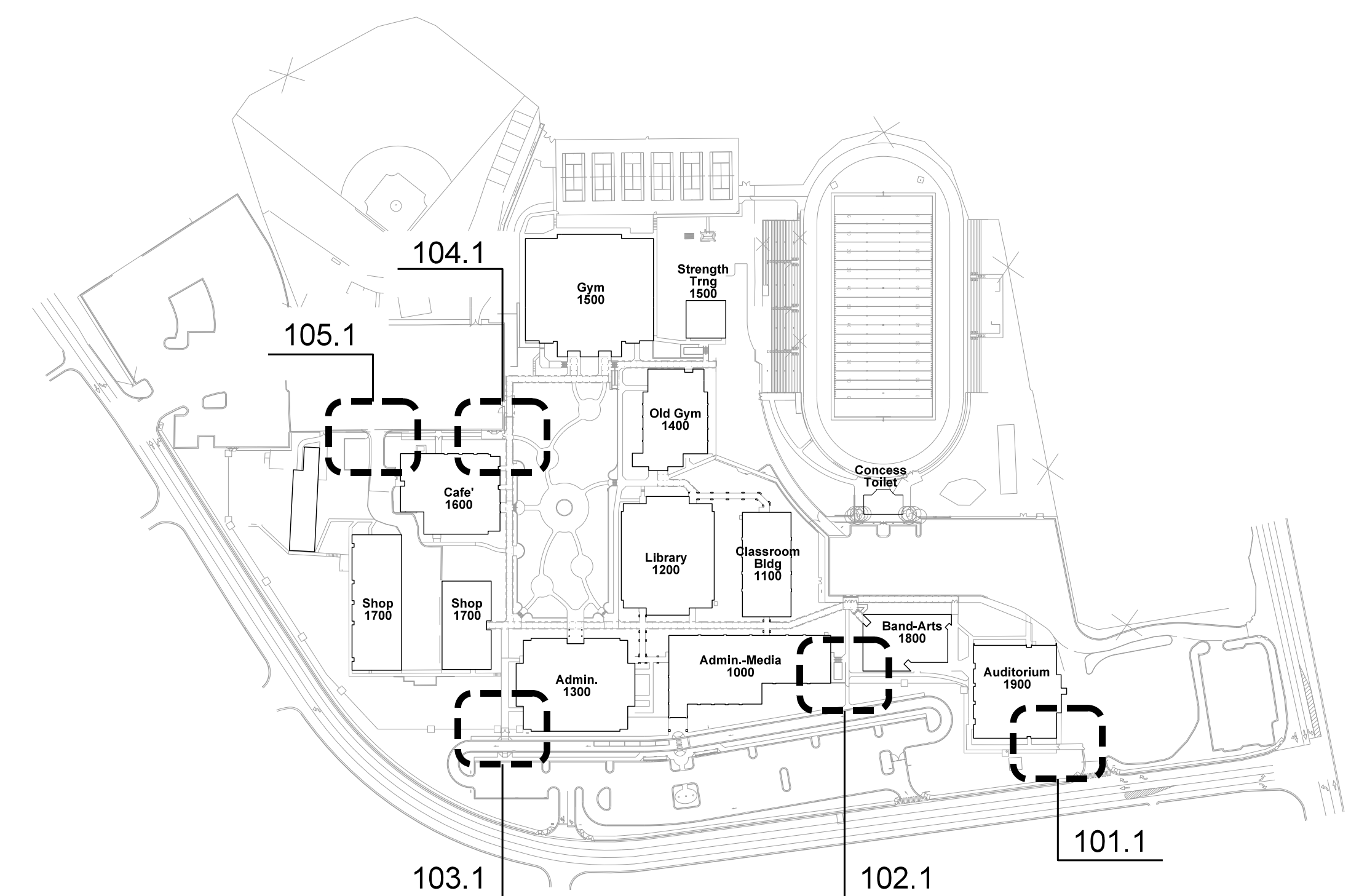
1. ALL DOORS TO BE 1.75" THK x 36"W x 80"H
2. ALL FRAMES SHALL BE 4.5" WIDE ALUMINUM AND RECEIVE HINGES AS SPECIFIED.
3. ALL DOORS TO BE INSTALLED WITH EXIT DEVICE AND CLOSURE WITH BACKSTOP AT PAIRS OF DOORS. PULL SIDE, PROVIDE PULL OR LEVER RIGHT SIDE ONLY AND KEYPED MULLIONS
4. PROVIDE CYLINDERS FOR KEYPED MULLIONS SUPPLIED BY ALUMINUM DOOR
5. ALL DOOR OPENINGS TO RECEIVE S2 ELECTRONICS WITH THROUGH-HINGE DELIVERY TO EXIT DEVICES, RIGHT SIDE ONLY AT PAIRS. ROUGH INS, CONDUITS, AND S2 COMPONENTS AND WIRING BY OWNER VENDOR, COORDINATION BY GC.



**104.2 SECURITY SCREEN WALL - EAST ELEVATION**  
SCALE: 1/4" = 1'-0"



**104.1 SECURITY SCREEN WALL PLAN**  
SCALE: 1/4" = 1'-0"



Key Plan  
NTS

No.	Date	Revision

**Hite associates**  
ARCHITECTURE / PLANNING / TECHNOLOGY  
2607 Meridian Drive / Greenville, NC 27634 / Tel: (252) 757-0333



New Security Entrances for  
**Lee County High School**  
Lee County Schools  
1708 Nash Street, Sanford, NC 27330

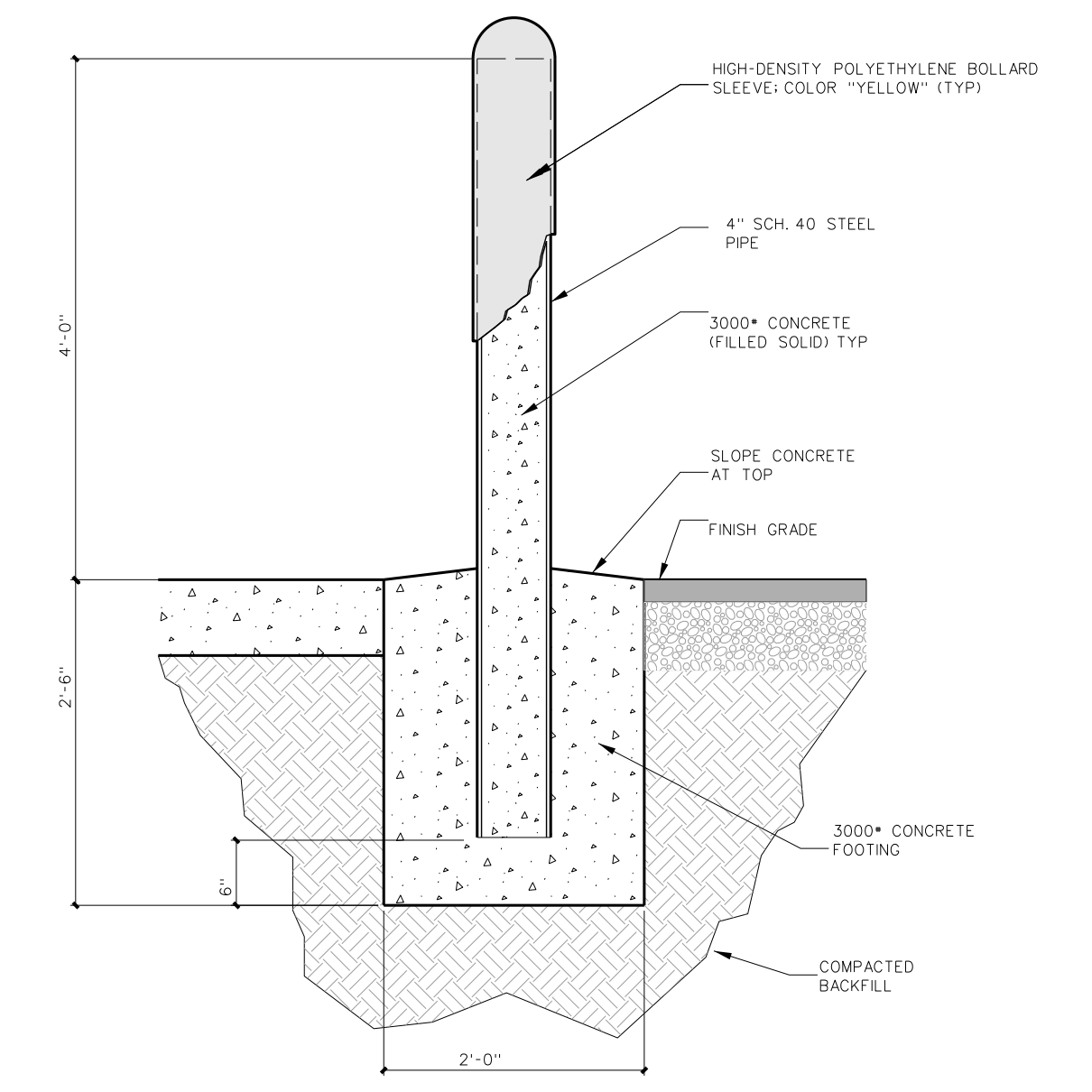
Project No. 22239  
Date: 13 March 2023  
Drawing No. **A 104**

**PLAN KEY NOTE / ACCESS CONTROL NOTES / GENERAL NOTES**  
(Apply Throughout)

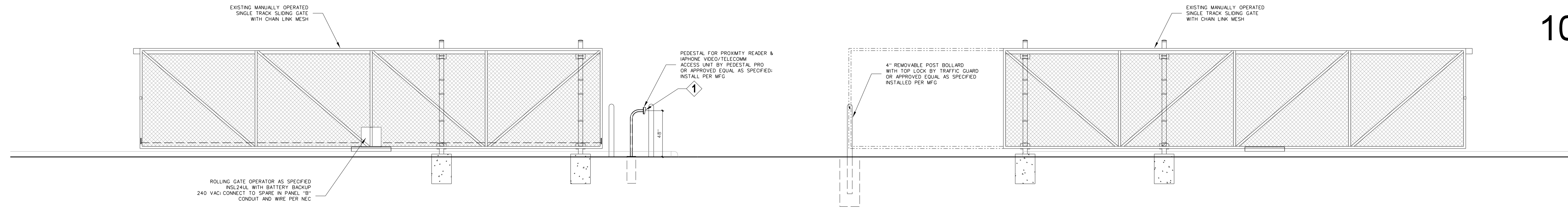
- 1. INSTALL SURFACE MOUNTED PROXIMITY CARD READER UNIT AS SHOWN 48" AFF TO CENTER OF UNIT U.O.N
- 2. GENERAL NOTE: PROVIDE DOOR CONTACTS ON ALL ACCESS CONTROLLED DOORS.
- 3. GENERAL NOTE: ALL ACCESS CONTROL NETWORK NODES TO BE PROVIDED IN THE SCHOOL IDF AND MDF ROOMS FINAL LOCATIONS AS DIRECTED BY OWNER.
- 4. GENERAL NOTE: PROVIDED ALL POWER SUPPLIES AS REQUIRED FOR ALL ELECTRIFIED DOOR LOCKING HARDWARE LOCATED ABOVE ADJACENT CEILINGS PROVIDED BY DIV 8 DOOR HARDWARE SUPPLIER TIED IN BY E.C.
- 5. GENERAL NOTE: ALL HARDWARE AND DEVICE INSTALLATIONS SHALL INTERFACE WITH EXISTING DOOR ACCESS CONTROL STATIONS.

**HARDWARE / EQUIPMENT LEGEND** (All hardware / equipment specifications shall comply with Lee County School standards, and be compatible with new or existing S2 Security Access control Systems)

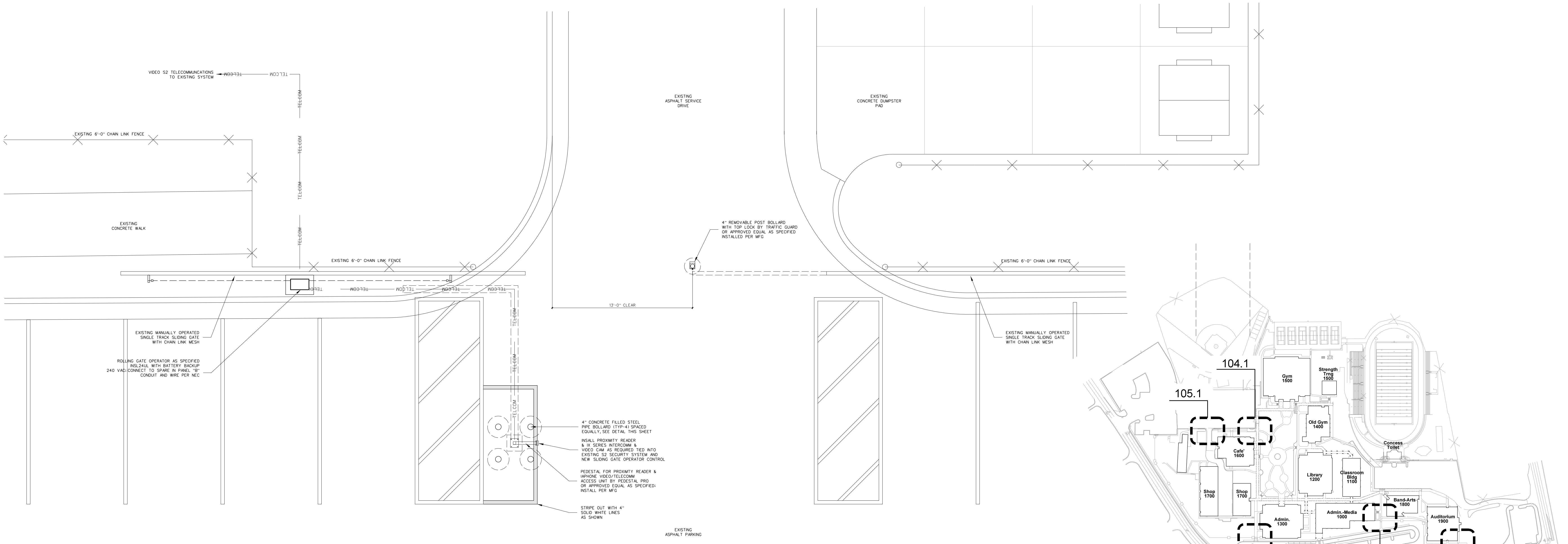
- 1. CARD READER UNIT: HID ICLASS CARD READER MODEL S2-800PTNEK040-S2SEC MINI-MULLION VERSION WHERE REQUIRED PROVIDED BY THE DIV 17 ACCESS CONTROL CONTRACTOR.
- 2. ACCESS CONTROL SYSTEM FIELD PANEL: S2 NETWORK NODE S2AN-E2RVM HOUSING UP TO SEVEN (7) S2 APPLICATION BLADES SUPPORTING UP TO 14 DOORS WITH NETWORK DROP - PROVIDED BY THE DIVISION 17 ACCESS CONTROL CONTRACTOR. ELECTRICAL CONTRACTOR TO PROVIDE ELECTRICAL POWER.
- 3. ACCESS CONTROL BASE STATION: COMPUTER SOFTWARE PROGRAM INSTALLED ON OWNER'S PC FOR SOFTWARE CONTROL OF CONNECTED DOORS - PROVIDED BY THE DIVISION 17 ACCESS CONTROL CONTRACTOR.
- 4. DOOR CONTACTS FOR EXISTING DOORFRAME SURFACE MOUNT SWITCH SETS: GRI 4480 SERIES, 4463A MINATURE ALUMINUM GEORGE RISK INDUSTRIES - PROVIDED BY THE DIVISION 17 ACCESS CONTROL CONTRACTOR. ELECTRICAL CONTRACTOR TO PROVIDE RACEWAY TO DOOR FRAME.
- 5. POWER SUPPLIES: FOR ALL POWERED LOCKING HARDWARE / EXIT DEVICES PROVIDED AND INSTALLED BY DIV 8 DOOR HARDWARE SUPPLIER.
- 6. VON DUPRIN QUIET ELECTRIC LATCH RETRACTION: QEL EXIT DEVICE 9699 SERIES, PROVIDED AND INSTALLED BY DIV 8 DOOR HARDWARE SUPPLIER.
- 7. EPT ELECTRIC POWER TRANSFER (FRAME TO DOOR WIRING PATH): VON DUPRIN MODELS EPT 2, EPT 10, EPT200 (AS APPLICATION REQUIRES), FOR USE WITH VON DUPRIN QEL EXIT DEVICES, PROVIDED AND INSTALLED BY DIV 8 DOOR HARDWARE SUPPLIER.
- 8. WORK OF ALL DIVISIONS SPECIFICATIONS BY GENERAL CONTRACTOR INCLUDING COORDINATION OF WORK BY DIVISION 16 AND 17 SUBCONTRACTORS, WORK IS TO BE COMPLETE IN ALL RESPECTS, INCLUDING POWER AND CONNECTIONS FOR BOTH NEW AND RELOCATED ITEMS AS SHOWN.
- 9. GENERAL NOTE: PATCH AND RESTORE ALL DISTURBED FINISHES TO MATCH ADJACENT SURFACES, I.E. INCLUDING BU NOT LIMITEDS TO FLOORING, PAINT, WALLS, CEILINGS, ETC.



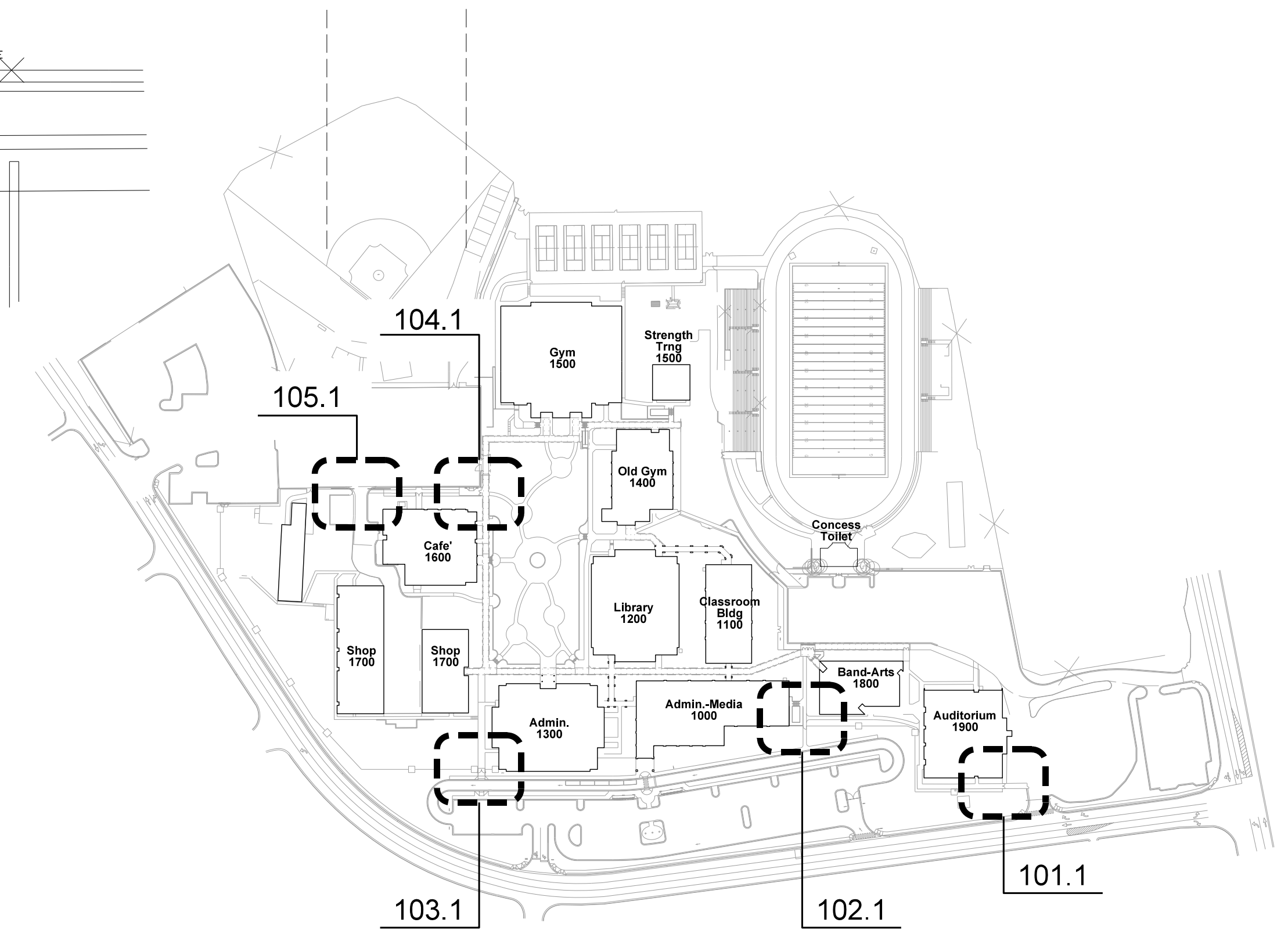
**105.3 STEEL PIPE BOLLARD DETAIL**  
NTS



**105.2 SECURITY SERVICE GATE ELEVATION**  
SCALE: 1/8" = 1'-0"



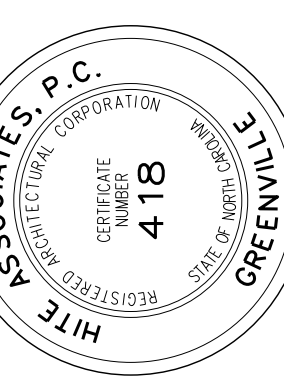
**105.1 SECURITY SERVICE GATE PLAN**  
SCALE: 1/4" = 1'-0"



**Key Plan**  
NTS

No.	Date	Revision

**Hite associates**  
ARCHITECTURE / PLANNING / TECHNOLOGY  
2600 Meridian Drive / Greenville, NC 27834 / Tel: (252) 757-0333



New Security Entrances for  
**Lee County High School**  
Lee County Schools  
1708 Nash Street, Sanford, NC 27330

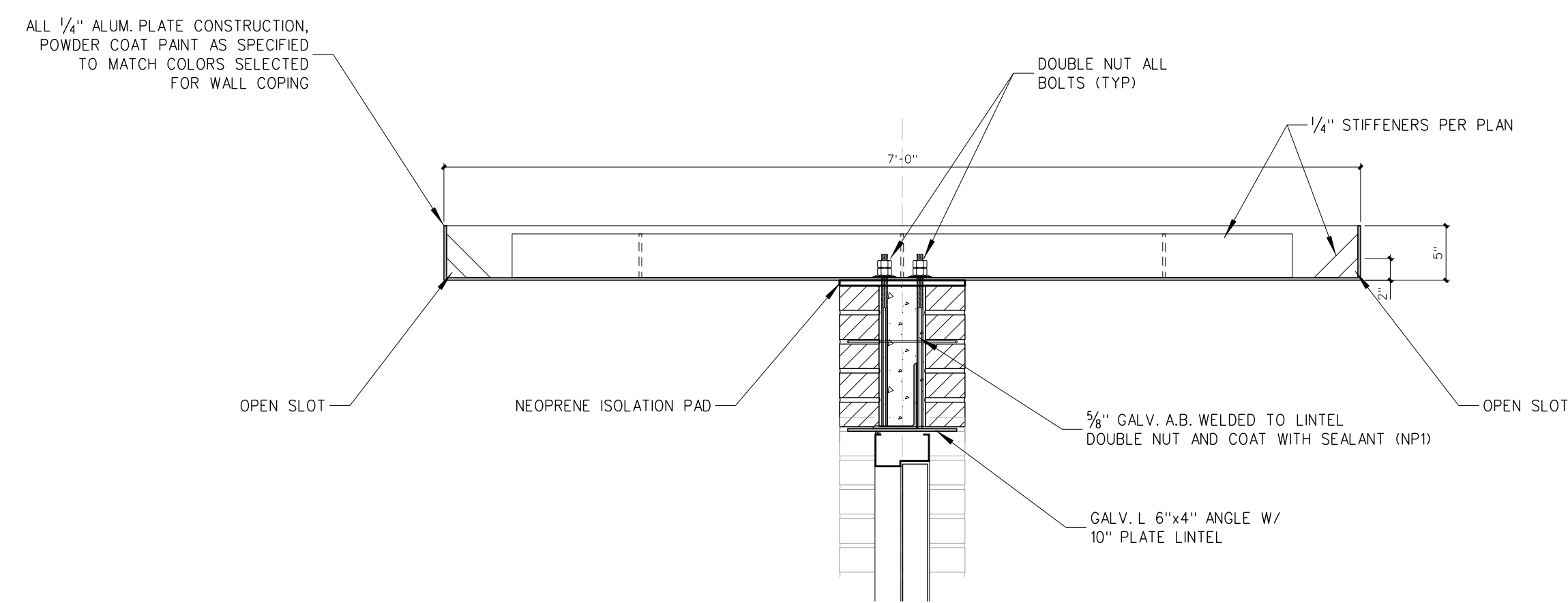
Project No. 22239

Date: 13 March 2023

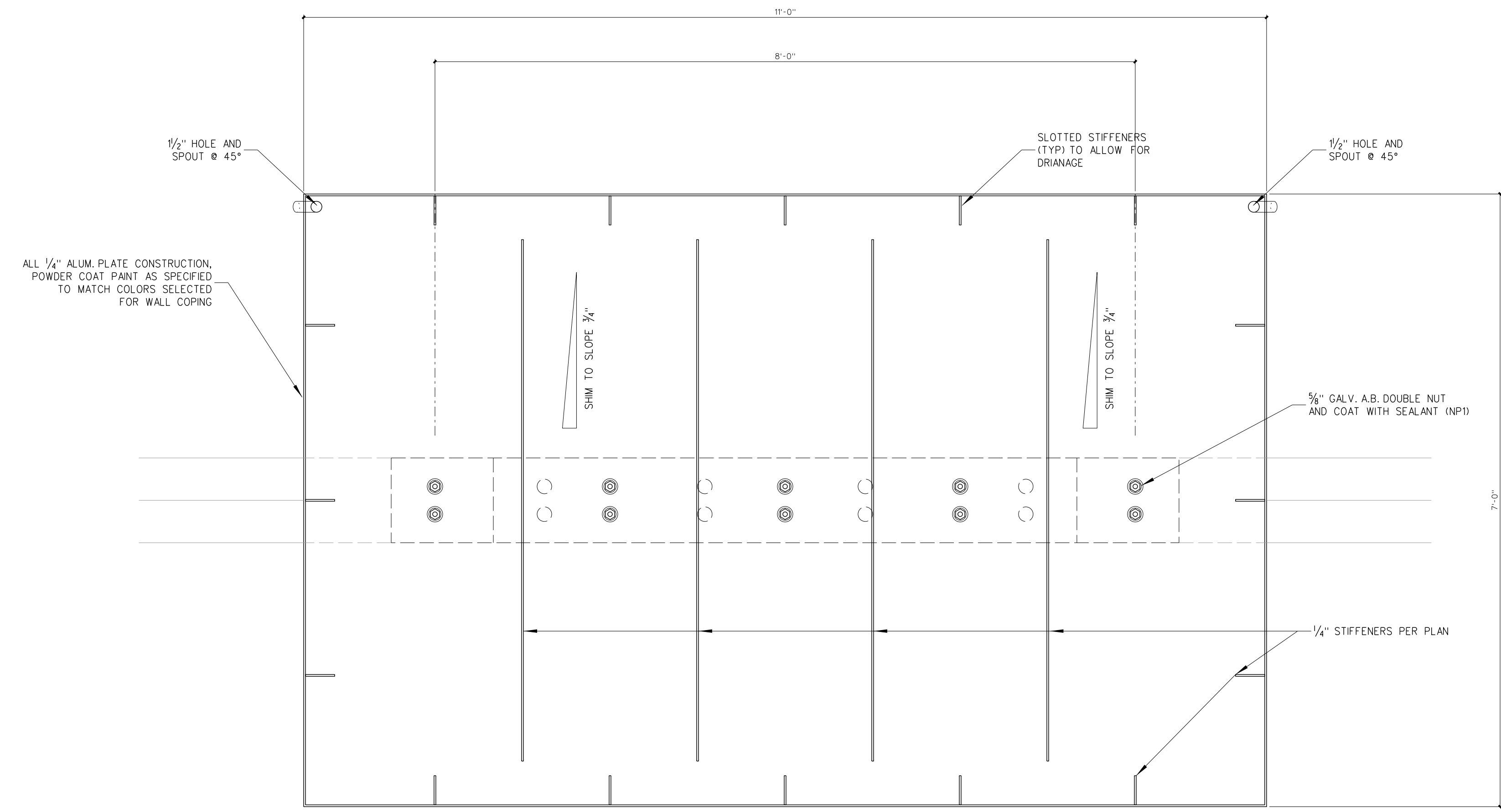
Drawing No.

**A**  
**105**

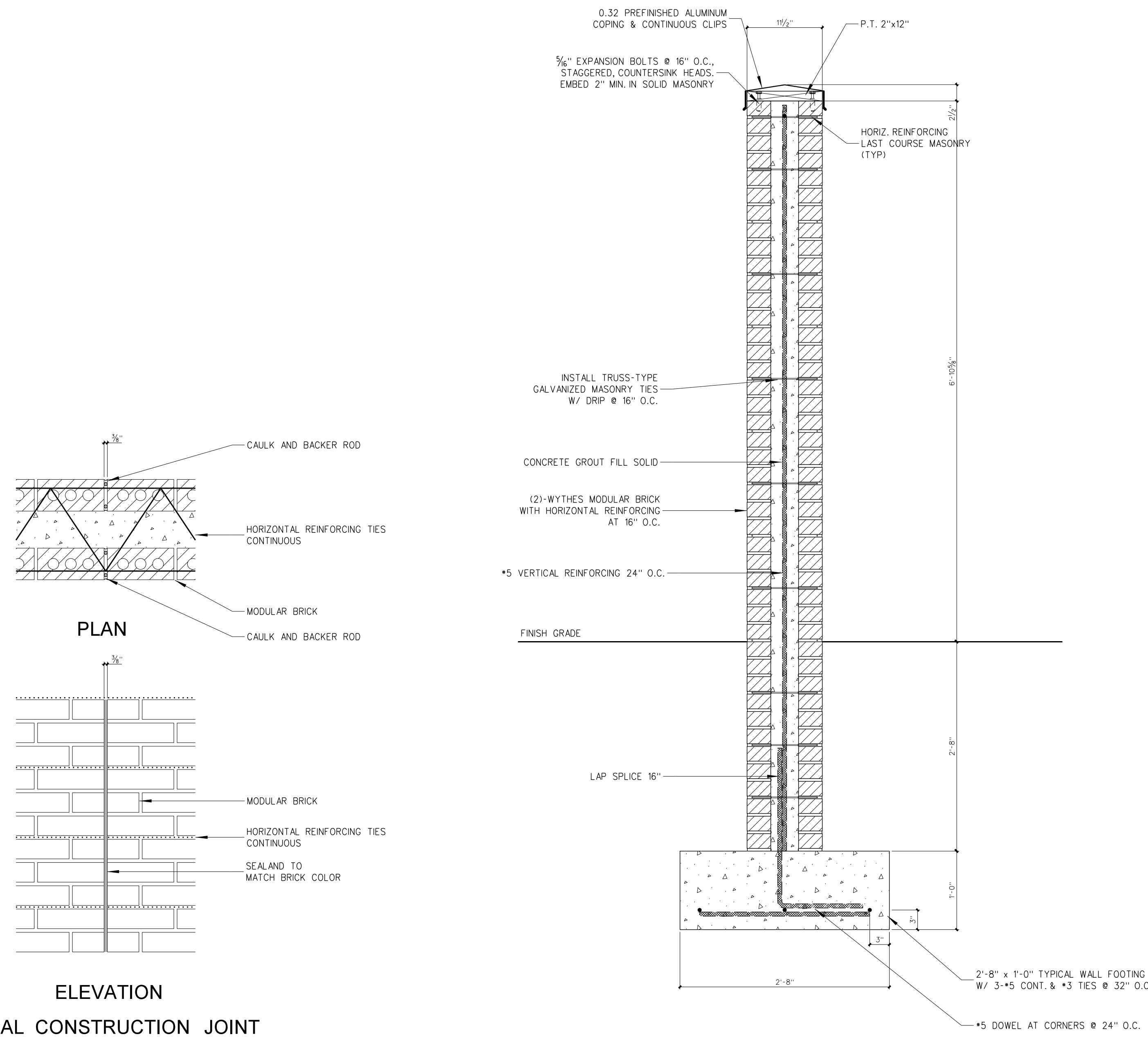




**106.5 SCREEN WALL SECTION AT DOOR**  
SCALE: 1" = 1'-0"

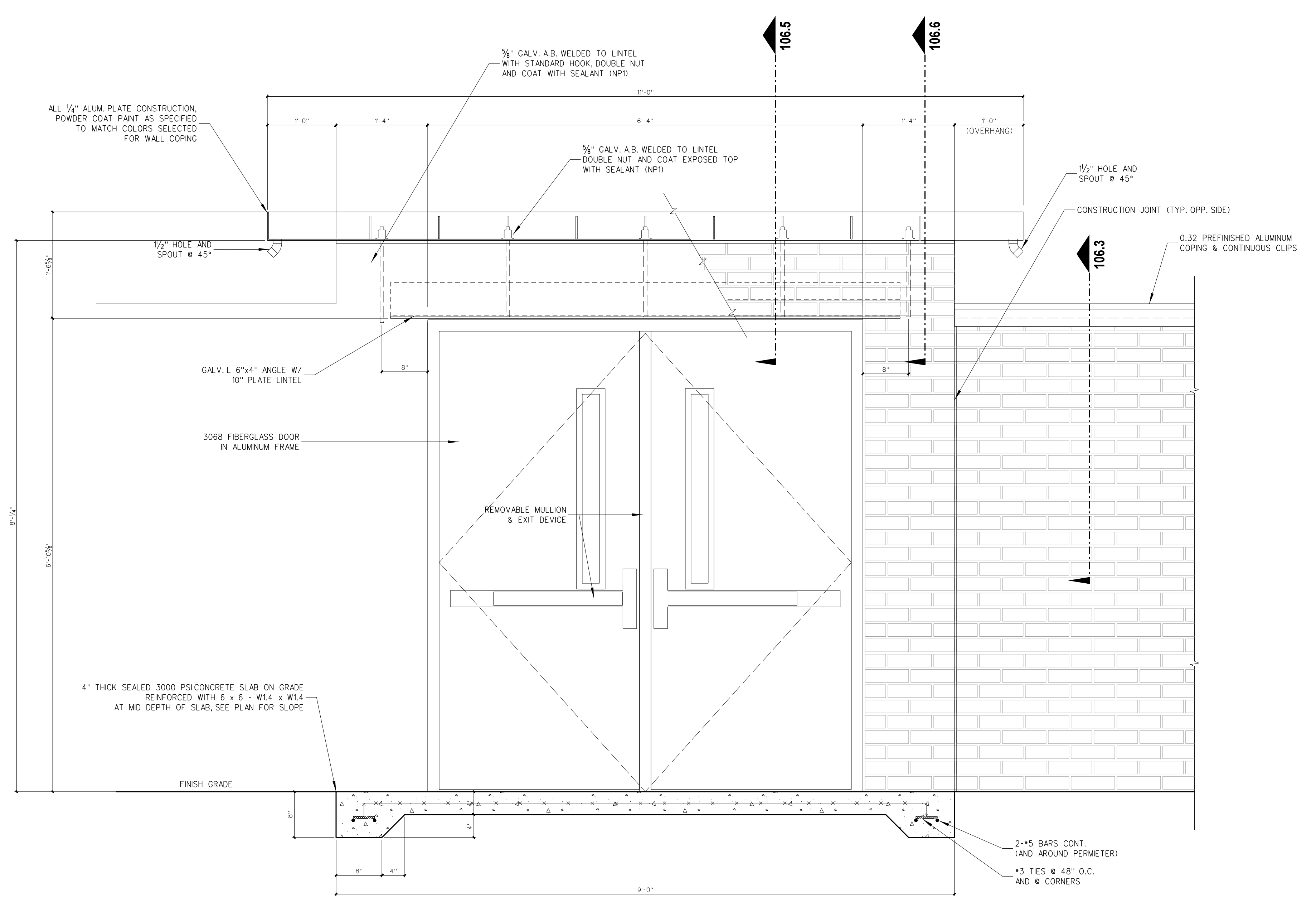


**106.2 PLAN VIEW METAL ROOF DETAIL AT DOOR**  
SCALE: 1" = 1'-0"



**106.4 MASONRY JOINT DETAIL**  
SCALE: 3/4" = 1'-0"

**106.3 TYPICAL BRICK MASONRY SCREEN WALL**  
SCALE: 1" = 1'-0"



**106.1 ELEVATION METAL ROOF DETAIL AT DOOR**  
SCALE: 1" = 1'-0"

No.	Date	Revision

**Hite associates**  
ARCHITECTURE / PLANNING / TECHNOLOGY  
2600 Meridian Drive / Greenville, NC 27834 / Tel(252) 757-0333



New Security Entrances for  
**Lee County High School**  
Lee County Schools  
1708 Nash Street, Sanford, NC 27330

Project No.	22239
Date:	13 March 2023
Drawing No.	<b>A</b> <b>106</b>